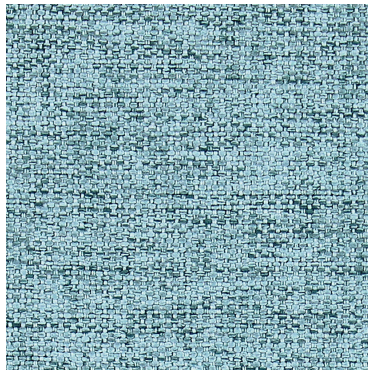


Upholstery Fabrics

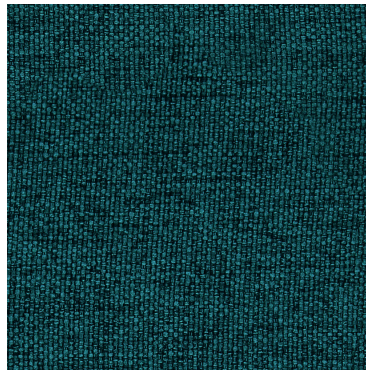
GRADE A

Beso

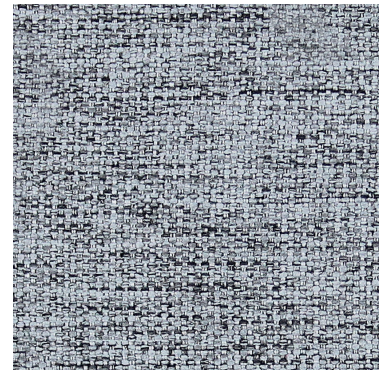
Grade A Upholstery



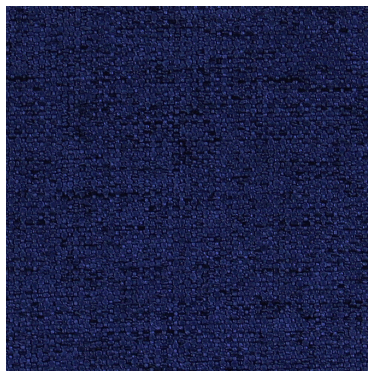
Aqua



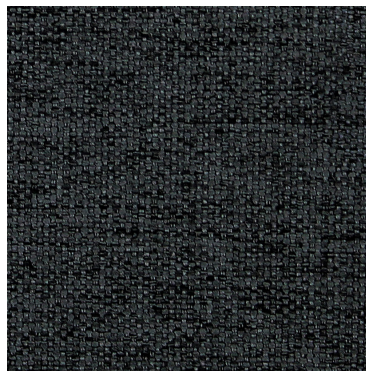
Capri



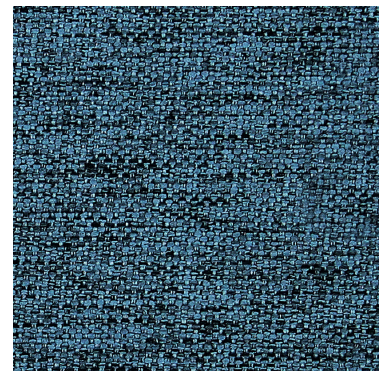
Chalice



Dusk



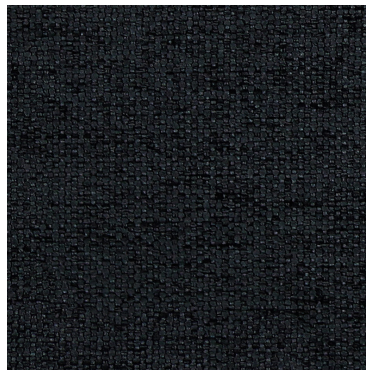
Graphite



Harbor



Jute



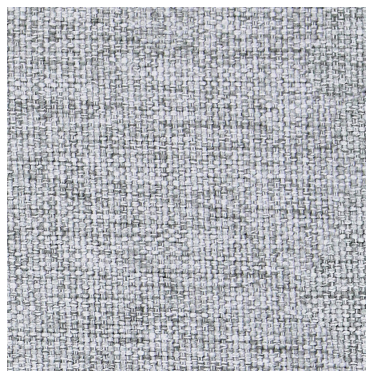
Onyx



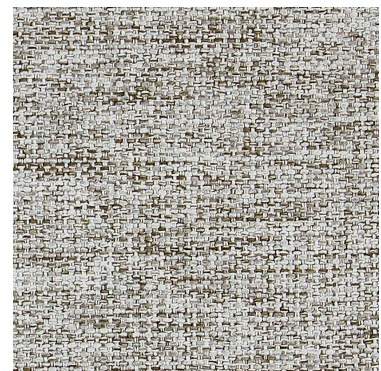
Peridot



Scarlet



Silver



Stone

Technical Information

AIS

Pattern: Beso

Grade: A

Characteristics: Content 100% Polyester Backing 100% Polyester Finish i-Clean® Width 54" Weight 14 oz Repeat None Directional Non-Directional	Testing: Abrasion 100,000 Double Rubs Flammability Pass Lightfastness Class 4/40 hrs. min.
Certifications: N/A	Sustainability N/A
Cleaning Code W	Application Upholstery

Cleaning And Care Information

S: Solvent **W:** Water-Based Cleaner **WS:** Water/Solvent Cleaner **IC:** Inherently Cleanable

BC: Bleach Cleanable - Bleach Cleanable – 1 part bleach, 9 parts water = 10% bleach, 90% water solution. Do not clean/disinfect fabric for longer than 10 minutes using the 10% bleach solution. Always rinse promptly with clean water after applying the bleach solution. Failure to do so will void any and all warranties.

Dye Transfer Disclaimer

Certain clothing and accessory dyes (such as those used on denim jeans) may migrate to lighter colors. This phenomenon is increased by humidity and temperature and is irreversible. AIS will not assume responsibility for dye transfer caused by external contaminants. Please check compatibility when using this product in combination with painted or varnished surfaces.

Additional Information

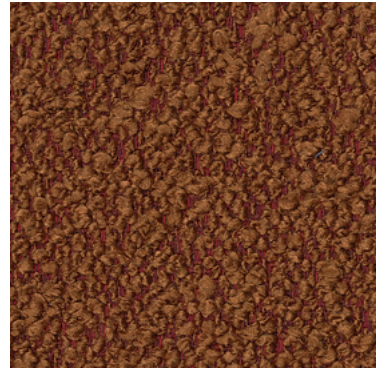
i-Clean® fabrics are high-performance textiles designed for comfort, durability, and easy maintenance. Nano-based technology repels moisture and stains, allowing spills to bead up for quick, effortless cleanup.

Boxer

Grade A Upholstery



Driftwood



Ember



Frost



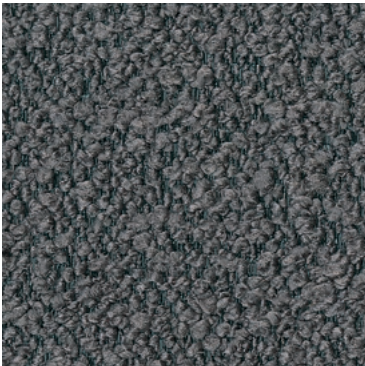
Haze



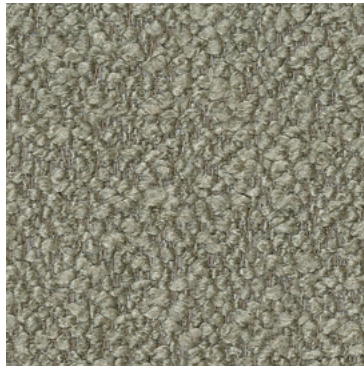
Hearthstone



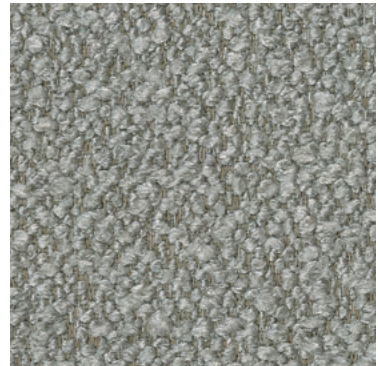
Lumen



Shadow



Thicket



Veil

Technical Information

AIS

Pattern: Boxer

Grade: A

Characteristics: Content 100% Polyester Backing Acrylic Finish None Width 55" Weight 12.92 oz Repeat None Directional Non-Directional	Testing: Abrasion 354,000 Double Rubs Flammability Pass Lightfastness Grade 5 ISO 105 B06
Certifications: N/A	Sustainability REACH Compliant
Cleaning Code W	Application Upholstery

Cleaning And Care Information

S: Solvent **W:** Water-Based Cleaner **WS:** Water/Solvent Cleaner **IC:** Inherently Cleanable

BC: Bleach Cleanable - Bleach Cleanable – 1 part bleach, 9 parts water = 10% bleach, 90% water solution. Do not clean/disinfect fabric for longer than 10 minutes using the 10% bleach solution. Always rinse promptly with clean water after applying the bleach solution. Failure to do so will void any and all warranties.

Dye Transfer Disclaimer

Certain clothing and accessory dyes (such as those used on denim jeans) may migrate to lighter colors. This phenomenon is increased by humidity and temperature and is irreversible. AIS will not assume responsibility for dye transfer caused by external contaminants. Please check compatibility when using this product in combination with painted or varnished surfaces.

Additional Information

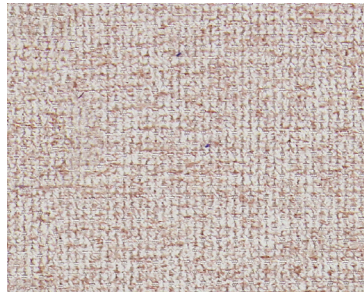
BOXERFC

Bravia

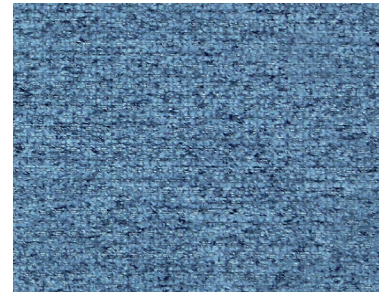
Grade A Upholstery



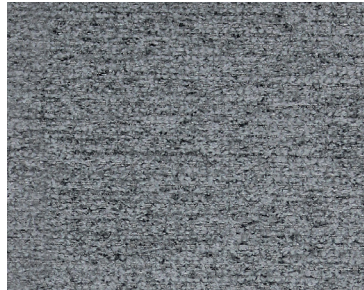
Azure



Blush



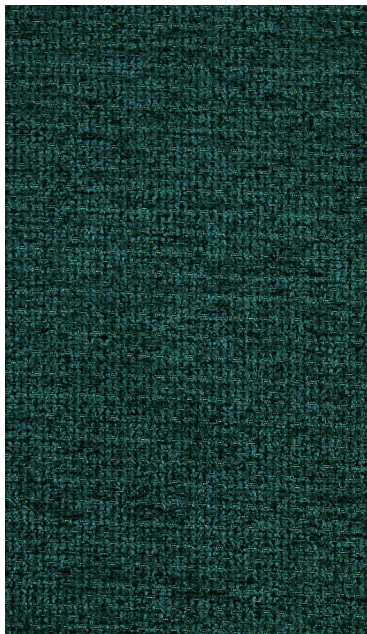
Cascade



Char



Cobalt



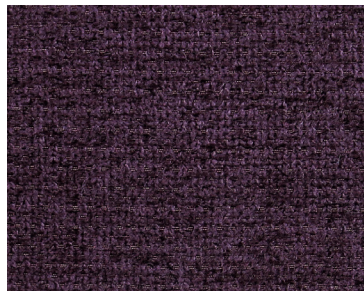
Emerald



Gold



Path



Plum



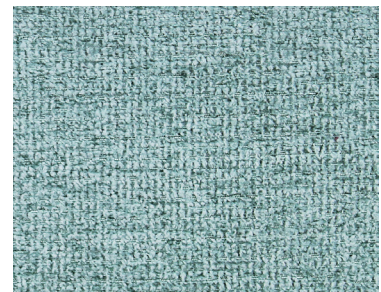
Putty



Sienna



Slate



Surf

Technical Information

AIS

Pattern: Bravia

Grade: A

Characteristics: Content 98% Polyester / 2% Nylon Backing 100% Polyester Finish i-Clean® Width 54" Weight 15.82 oz Repeat None Directional Non-Directional	Testing: Abrasion 80,000 Double Rubs Flammability Pass Lightfastness Class 4/40 hrs. min.
Certifications: N/A	Sustainability N/A
Cleaning Code W	Application Upholstery

Cleaning And Care Information

S: Solvent **W:** Water-Based Cleaner **WS:** Water/Solvent Cleaner **IC:** Inherently Cleanable

BC: Bleach Cleanable - Bleach Cleanable – 1 part bleach, 9 parts water = 10% bleach, 90% water solution. Do not clean/disinfect fabric for longer than 10 minutes using the 10% bleach solution. Always rinse promptly with clean water after applying the bleach solution. Failure to do so will void any and all warranties.

Dye Transfer Disclaimer

Certain clothing and accessory dyes (such as those used on denim jeans) may migrate to lighter colors. This phenomenon is increased by humidity and temperature and is irreversible. AIS will not assume responsibility for dye transfer caused by external contaminants. Please check compatibility when using this product in combination with painted or varnished surfaces.

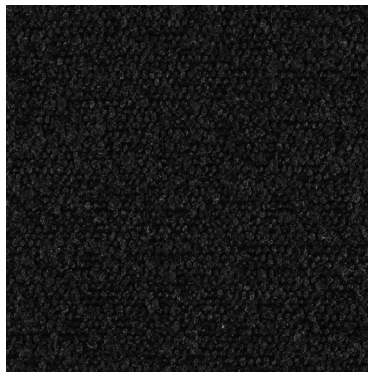
Additional Information

i-Clean® fabrics are high-performance textiles designed for comfort, durability, and easy maintenance. Nano-based technology repels moisture and stains, allowing spills to bead up for quick, effortless cleanup.

BRAVIAFC



Goldenrod



Obsidian



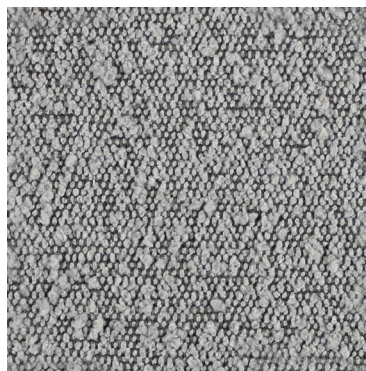
Ochre



Quartz



Shadow



Smoke



Snow

Technical Information

AIS

Pattern: Chap

Grade: A

Characteristics: Content 96% Polyester / 4% Acrylic Backing Synthetic Latex Blend Finish i-Clean® Width 54" Weight 30.2 oz Repeat None Directional Non-Directional	Testing: Abrasion 95,000 Double Rubs Flammability Pass Lightfastness Class 4/40 hrs. min.
Certifications: N/A	Sustainability N/A
Cleaning Code W	Application Upholstery

Cleaning And Care Information

S: Solvent **W:** Water-Based Cleaner **WS:** Water/Solvent Cleaner **IC:** Inherently Cleanable

BC: Bleach Cleanable - Bleach Cleanable – 1 part bleach, 9 parts water = 10% bleach, 90% water solution. Do not clean/disinfect fabric for longer than 10 minutes using the 10% bleach solution. Always rinse promptly with clean water after applying the bleach solution. Failure to do so will void any and all warranties.

Dye Transfer Disclaimer

Certain clothing and accessory dyes (such as those used on denim jeans) may migrate to lighter colors. This phenomenon is increased by humidity and temperature and is irreversible. AIS will not assume responsibility for dye transfer caused by external contaminants. Please check compatibility when using this product in combination with painted or varnished surfaces.

Additional Information

i-Clean® fabrics are high-performance textiles designed for comfort, durability, and easy maintenance. Nano-based technology repels moisture and stains, allowing spills to bead up for quick, effortless cleanup.

Dwell

Grade A Upholstery



Aztec



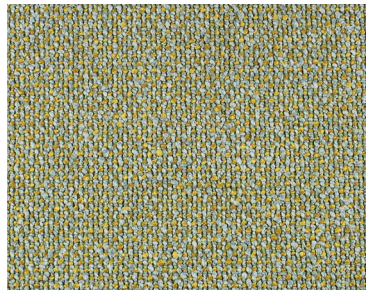
Blush



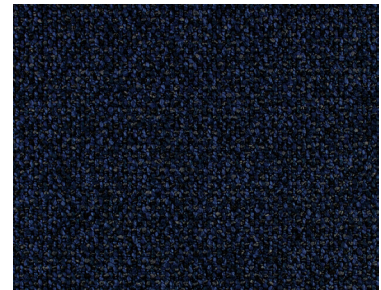
Caldera



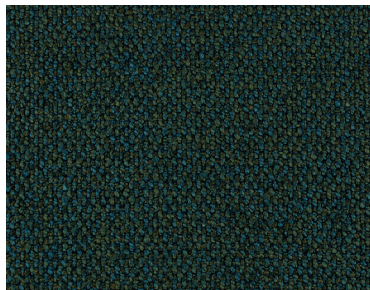
Carob



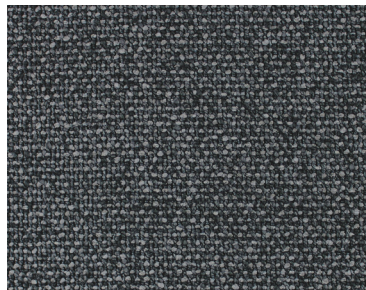
Citron



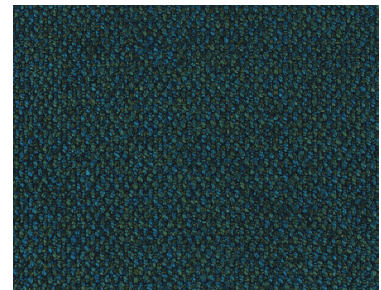
Dusk



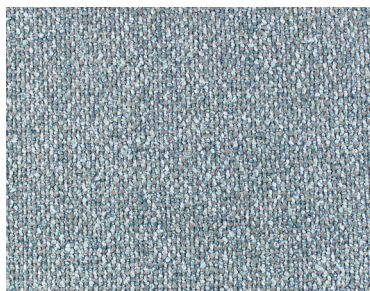
Forest



Graphite



Lagoon



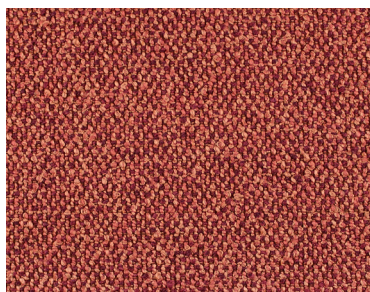
Mist



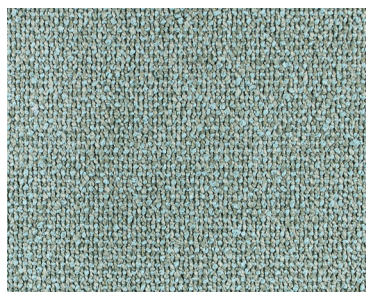
Path



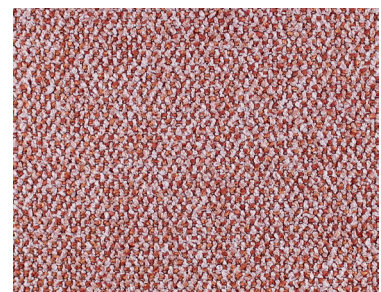
Quartz



Rumba



Seaglass



Sushi

Technical Information

AIS

Pattern: Dwell

Grade: A

Characteristics: Content 100% Polyester Backing Synthetic Latex Backing Finish i-Clean® Width 54" Weight 33.18 oz Repeat None Directional Non-Directional	Testing: Abrasion 95,000 Double Rubs Flammability Pass Lightfastness Class 4/40 hrs. min.
Certifications: N/A	Sustainability N/A
Cleaning Code W	Application Upholstery

Cleaning And Care Information

S: Solvent **W:** Water-Based Cleaner **WS:** Water/Solvent Cleaner **IC:** Inherently Cleanable

BC: Bleach Cleanable - Bleach Cleanable – 1 part bleach, 9 parts water = 10% bleach, 90% water solution. Do not clean/disinfect fabric for longer than 10 minutes using the 10% bleach solution. Always rinse promptly with clean water after applying the bleach solution. Failure to do so will void any and all warranties.

Dye Transfer Disclaimer

Certain clothing and accessory dyes (such as those used on denim jeans) may migrate to lighter colors. This phenomenon is increased by humidity and temperature and is irreversible. AIS will not assume responsibility for dye transfer caused by external contaminants. Please check compatibility when using this product in combination with painted or varnished surfaces.

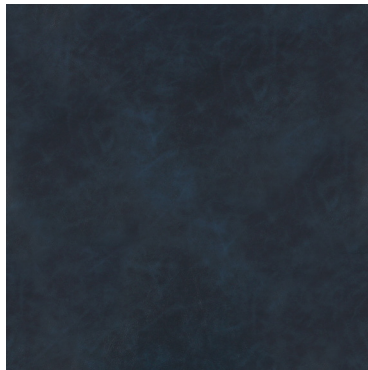
Additional Information

i-Clean® fabrics are high-performance textiles designed for comfort, durability, and easy maintenance. Nano-based technology repels moisture and stains, allowing spills to bead up for quick, effortless cleanup.

DWELLFC

Equis

Grade A Upholstery



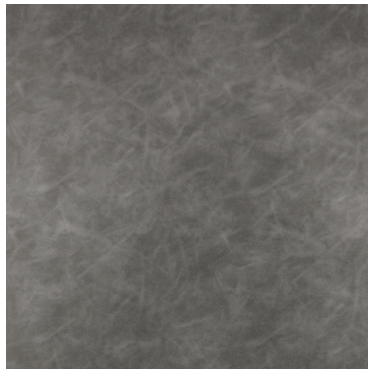
Cadet



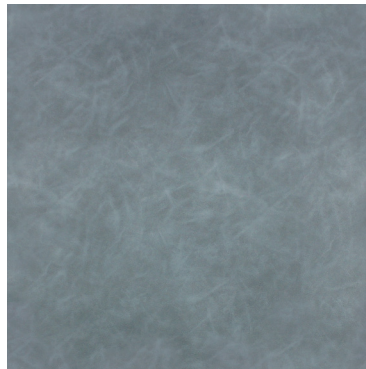
Chestnut



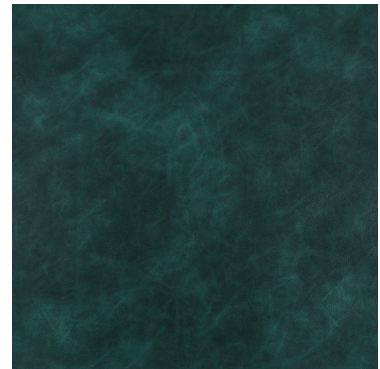
Derby



Gelding



Harbor



Juniper



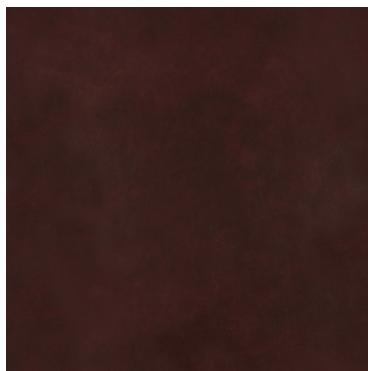
Mint



Noir



Saddle



Shiraz



Spruce



Tanner

Technical Information

AIS

Pattern: Equis

Grade: A

Characteristics: Content 100% Polyurethane Backing 100% Polyester Finish i-Clean® Width 54" Weight 18 oz Repeat None Directional Non-Directional	Testing: Abrasion 100,000 Double Rubs Flammability Pass Lightfastness Class 4/200 hrs. min.
Certifications: N/A	Sustainability N/A
Cleaning Code W	Application Upholstery

Cleaning And Care Information

S: Solvent **W:** Water-Based Cleaner **WS:** Water/Solvent Cleaner **IC:** Inherently Cleanable

BC: Bleach Cleanable - Bleach Cleanable – 1 part bleach, 9 parts water = 10% bleach, 90% water solution. Do not clean/disinfect fabric for longer than 10 minutes using the 10% bleach solution. Always rinse promptly with clean water after applying the bleach solution. Failure to do so will void any and all warranties.

Dye Transfer Disclaimer

Certain clothing and accessory dyes (such as those used on denim jeans) may migrate to lighter colors. This phenomenon is increased by humidity and temperature and is irreversible. AIS will not assume responsibility for dye transfer caused by external contaminants. Please check compatibility when using this product in combination with painted or varnished surfaces.

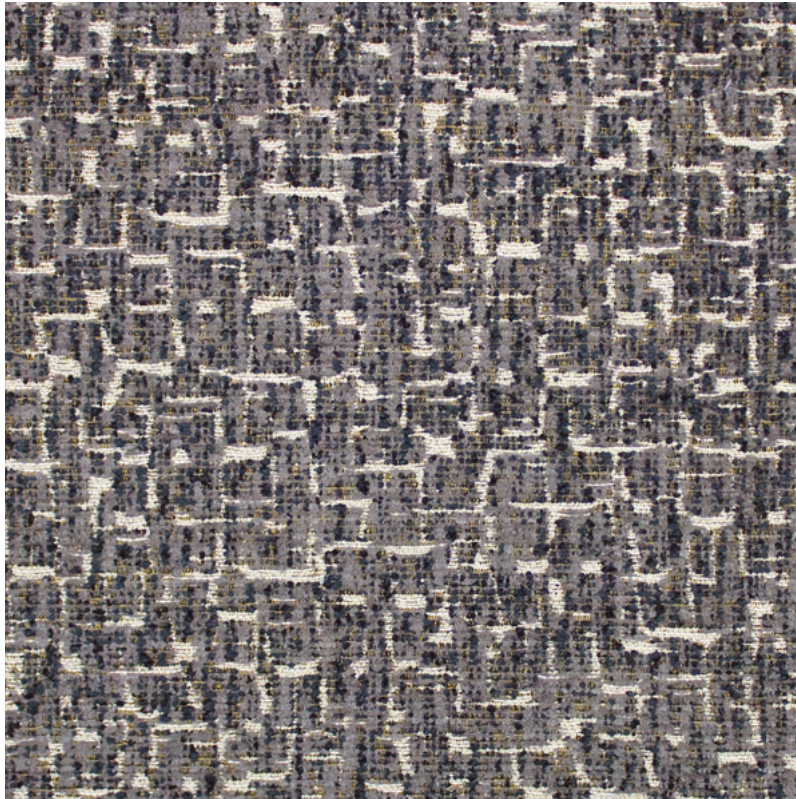
Additional Information

i-Clean® fabrics are high-performance textiles designed for comfort, durability, and easy maintenance. Nano-based technology repels moisture and stains, allowing spills to bead up for quick, effortless cleanup.

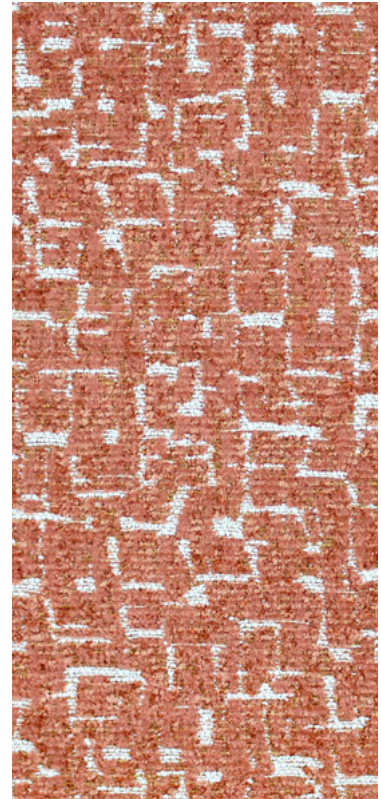
EQUISFC

Haptic

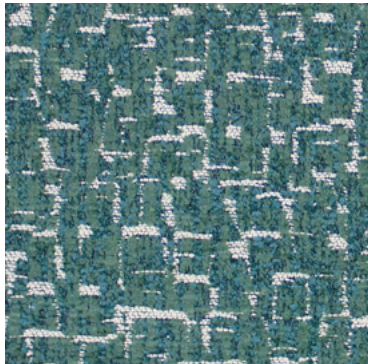
Grade A Upholstery



Carbon



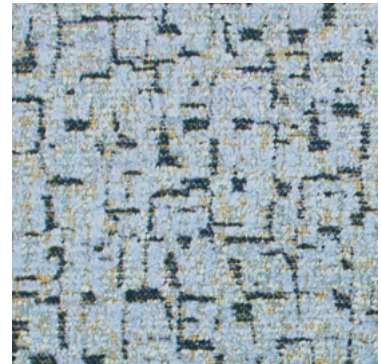
Coral



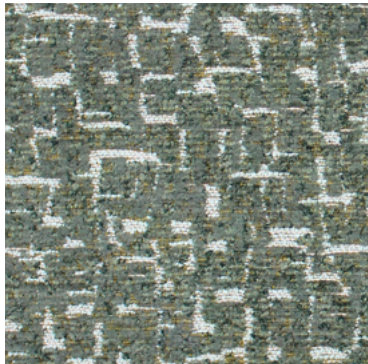
Cyprus



Fathom



Glacier



Kale



Tinder



Vapor

Technical Information

AIS

Pattern: Haptic

Grade: A

Characteristics: Content 100% Polyester Backing Synthetic Latex Blend Finish i-Clean® Width 54" Weight 25.82 oz Repeat 14.09"H 12.28"W Directional Directional	Testing: Abrasion 50,000 Double Rubs Flammability Pass Lightfastness Class 4/40 hrs. min.
Certifications: N/A	Sustainability N/A
Cleaning Code W	Application Upholstery

Cleaning And Care Information

S: Solvent **W:** Water-Based Cleaner **WS:** Water/Solvent Cleaner **IC:** Inherently Cleanable

BC: Bleach Cleanable - Bleach Cleanable – 1 part bleach, 9 parts water = 10% bleach, 90% water solution. Do not clean/disinfect fabric for longer than 10 minutes using the 10% bleach solution. Always rinse promptly with clean water after applying the bleach solution. Failure to do so will void any and all warranties.

Dye Transfer Disclaimer

Certain clothing and accessory dyes (such as those used on denim jeans) may migrate to lighter colors. This phenomenon is increased by humidity and temperature and is irreversible. AIS will not assume responsibility for dye transfer caused by external contaminants. Please check compatibility when using this product in combination with painted or varnished surfaces.

Additional Information

i-Clean® fabrics are high-performance textiles designed for comfort, durability, and easy maintenance. Nano-based technology repels moisture and stains, allowing spills to bead up for quick, effortless cleanup.

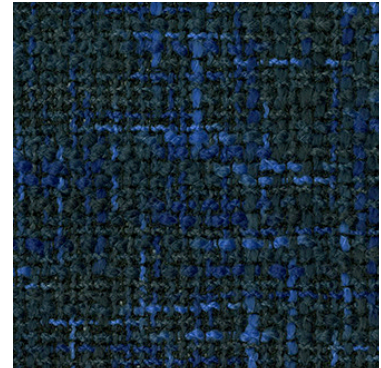
HAPTICFC

Haute

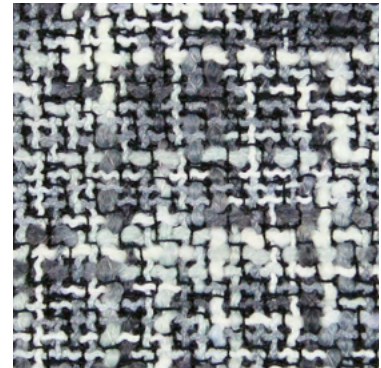
Grade A Upholstery



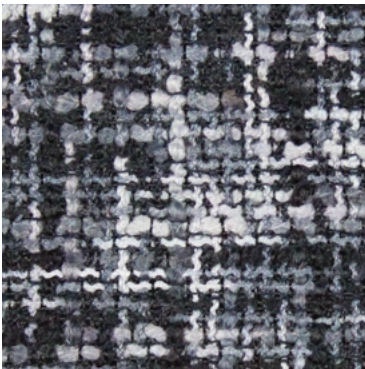
Autumn



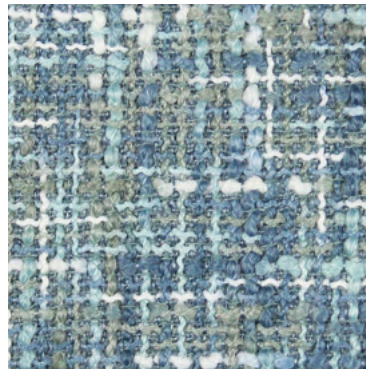
Black Sea



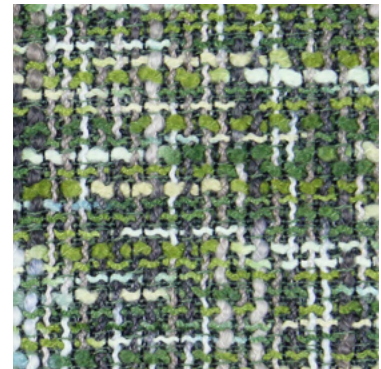
Caviar



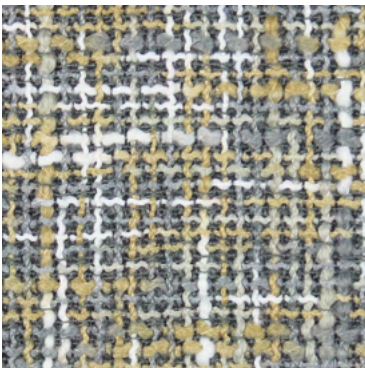
Char



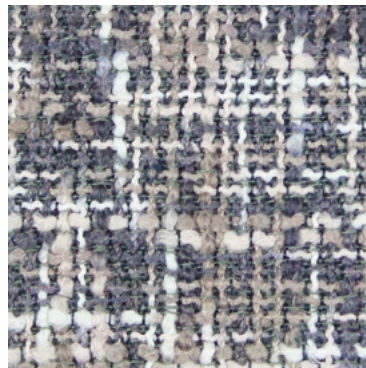
Foggy



Kelp



Sanderling



Toadstool



Weathered

Technical Information

AIS

Pattern: Haute

Grade: A

Characteristics: Content 100% Polyester Backing Synthetic Latex Blend Finish i-Clean® Width 54" Weight 21.34 oz Repeat None Directional Directional	Testing: Abrasion 95,000 Double Rubs Flammability Pass Lightfastness Class 4/40 hrs. min.
Certifications: N/A	Sustainability N/A
Cleaning Code W	Application Upholstery

Cleaning And Care Information

S: Solvent **W:** Water-Based Cleaner **WS:** Water/Solvent Cleaner **IC:** Inherently Cleanable

BC: Bleach Cleanable - Bleach Cleanable – 1 part bleach, 9 parts water = 10% bleach, 90% water solution. Do not clean/disinfect fabric for longer than 10 minutes using the 10% bleach solution. Always rinse promptly with clean water after applying the bleach solution. Failure to do so will void any and all warranties.

Dye Transfer Disclaimer

Certain clothing and accessory dyes (such as those used on denim jeans) may migrate to lighter colors. This phenomenon is increased by humidity and temperature and is irreversible. AIS will not assume responsibility for dye transfer caused by external contaminants. Please check compatibility when using this product in combination with painted or varnished surfaces.

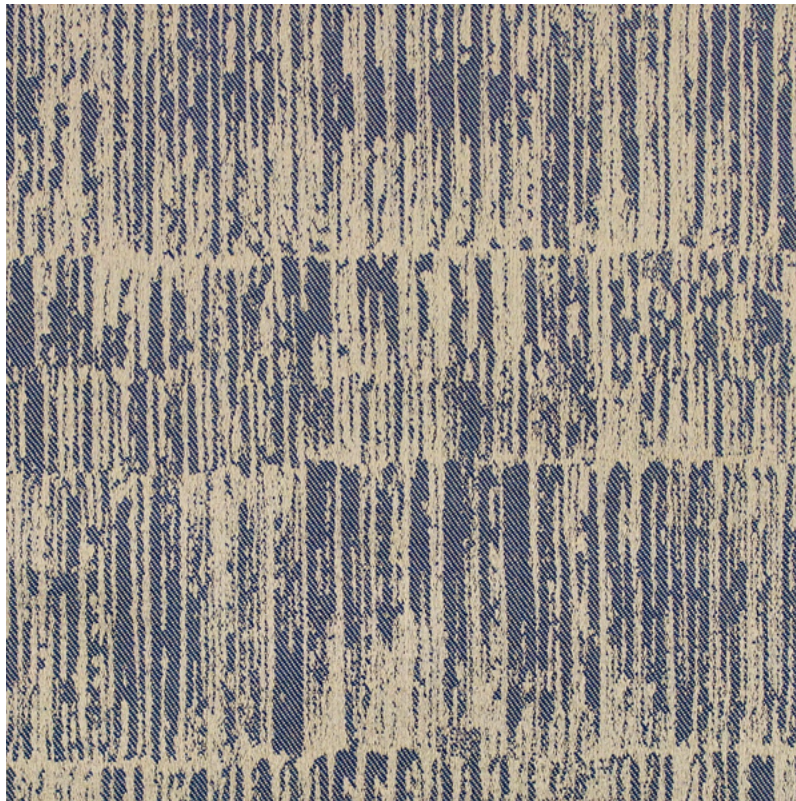
Additional Information

i-Clean® fabrics are high-performance textiles designed for comfort, durability, and easy maintenance. Nano-based technology repels moisture and stains, allowing spills to bead up for quick, effortless cleanup.

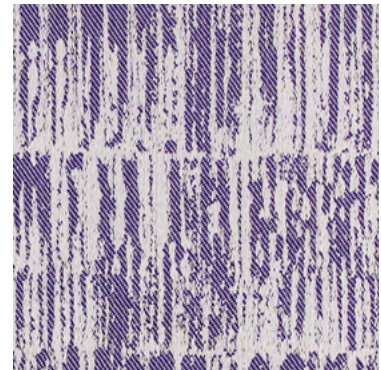
HAUTEFC

Inlay

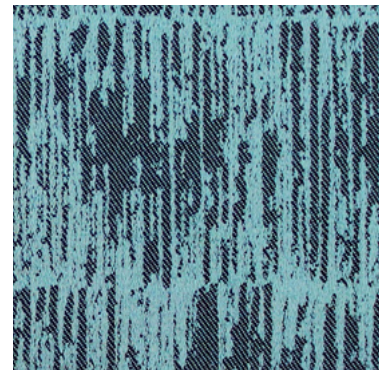
Grade A Upholstery



Alchemy



Amethyst



Beryl



Gilded



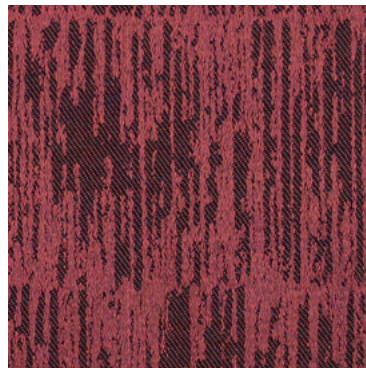
Lapis



Mica



Putty



Ruby



Shale

Technical Information

AIS

Pattern: Inlay

Grade: A

Characteristics: Content 100% Polyester Backing Synthetic Latex Blend Finish i-Clean® Width 54" Weight 12.17 oz Repeat 14.41"H 8.07"W Directional Directional	Testing: Abrasion 100,000 Double Rubs Flammability Pass Lightfastness Class 4/40 hrs. min.
Certifications: N/A	Sustainability N/A
Cleaning Code W	Application Upholstery

Cleaning And Care Information

S: Solvent **W:** Water-Based Cleaner **WS:** Water/Solvent Cleaner **IC:** Inherently Cleanable

BC: Bleach Cleanable - Bleach Cleanable – 1 part bleach, 9 parts water = 10% bleach, 90% water solution. Do not clean/disinfect fabric for longer than 10 minutes using the 10% bleach solution. Always rinse promptly with clean water after applying the bleach solution. Failure to do so will void any and all warranties.

Dye Transfer Disclaimer

Certain clothing and accessory dyes (such as those used on denim jeans) may migrate to lighter colors. This phenomenon is increased by humidity and temperature and is irreversible. AIS will not assume responsibility for dye transfer caused by external contaminants. Please check compatibility when using this product in combination with painted or varnished surfaces.

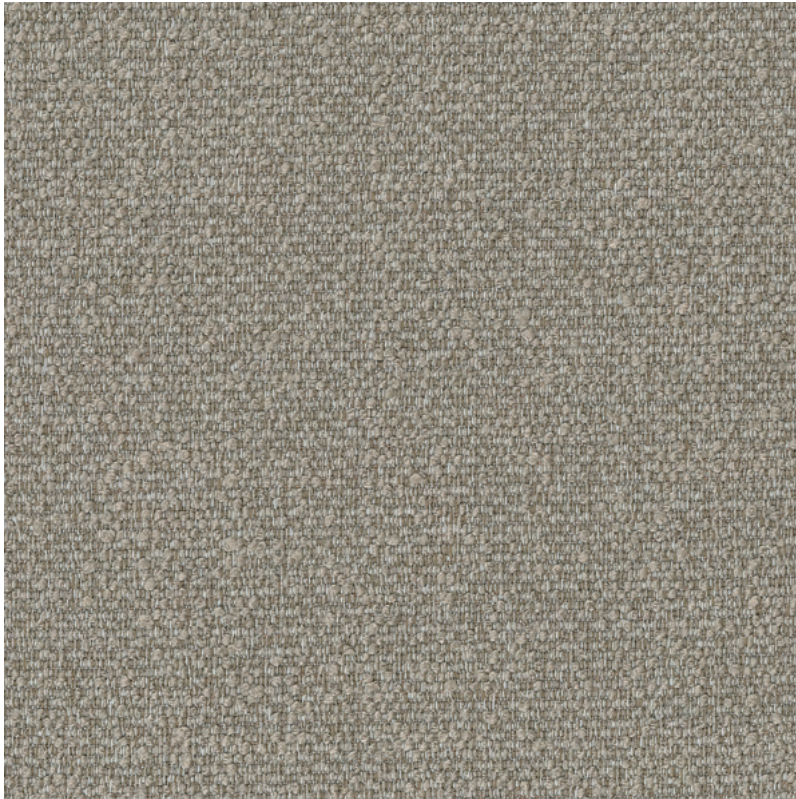
Additional Information

i-Clean® fabrics are high-performance textiles designed for comfort, durability, and easy maintenance. Nano-based technology repels moisture and stains, allowing spills to bead up for quick, effortless cleanup.

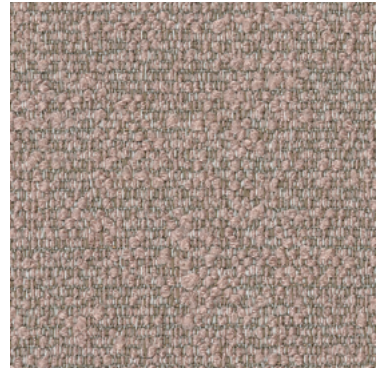
INLAYFC

Jules

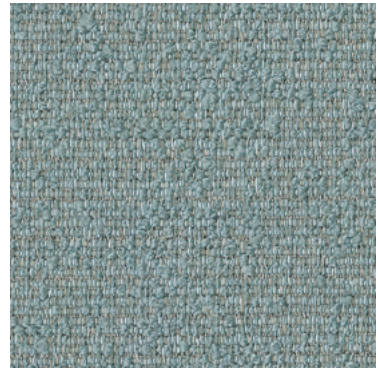
Grade A Upholstery



Biscuit



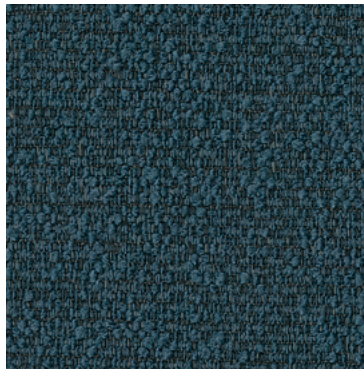
Blush



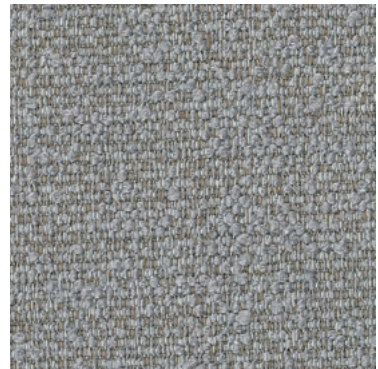
Cloud



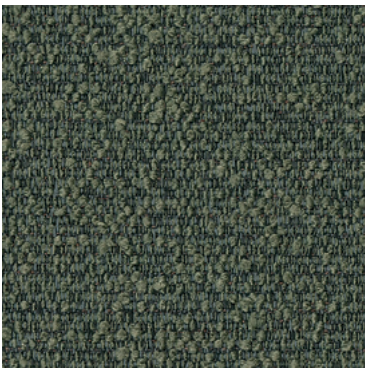
Flurry



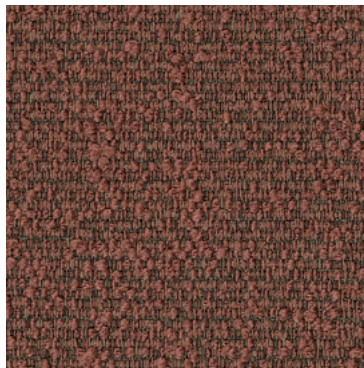
Harbor



Mist



Pine



Rosewood



Slate

Technical Information

AIS

Pattern: Jules

Grade: A

Characteristics: Content 46% Recycled Polyester / 41% Polyester / 13% Recycled Cotton Backing Acrylic Finish None Width 55" Weight 11.48 oz Repeat None Directional Non-Directional	Testing: Abrasion 210,000 Double Rubs Flammability Pass Lightfastness Grade 5 ISO 105 B06
Certifications: N/A	Sustainability REACH Compliant
Cleaning Code W	Application Upholstery

Cleaning And Care Information

S: Solvent **W:** Water-Based Cleaner **WS:** Water/Solvent Cleaner **IC:** Inherently Cleanable

BC: Bleach Cleanable - Bleach Cleanable – 1 part bleach, 9 parts water = 10% bleach, 90% water solution. Do not clean/disinfect fabric for longer than 10 minutes using the 10% bleach solution. Always rinse promptly with clean water after applying the bleach solution. Failure to do so will void any and all warranties.

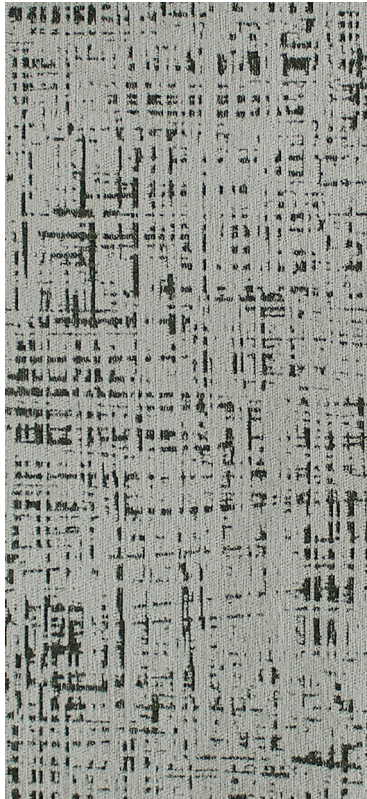
Dye Transfer Disclaimer

Certain clothing and accessory dyes (such as those used on denim jeans) may migrate to lighter colors. This phenomenon is increased by humidity and temperature and is irreversible. AIS will not assume responsibility for dye transfer caused by external contaminants. Please check compatibility when using this product in combination with painted or varnished surfaces.

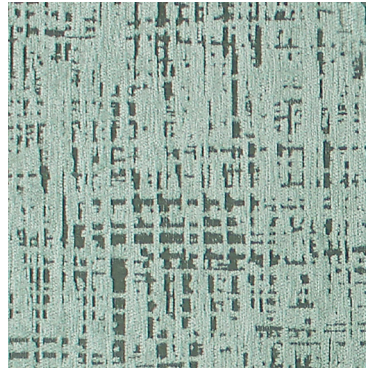
Additional Information

Kai

Grade A Upholstery



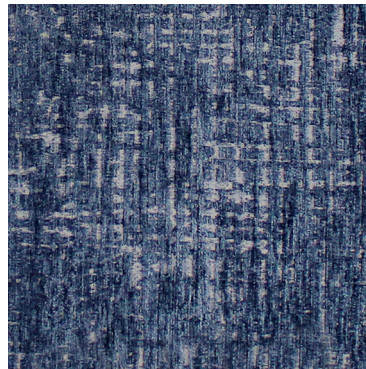
Basalt



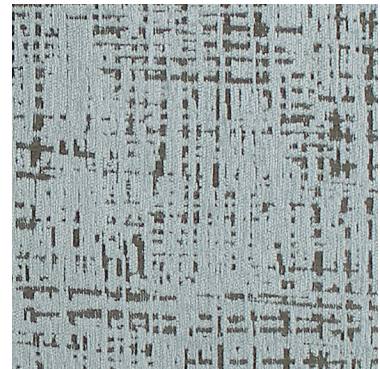
Celadon



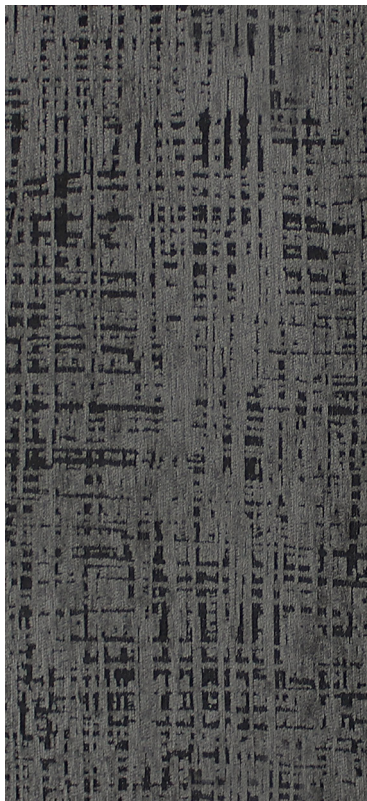
Gypsum



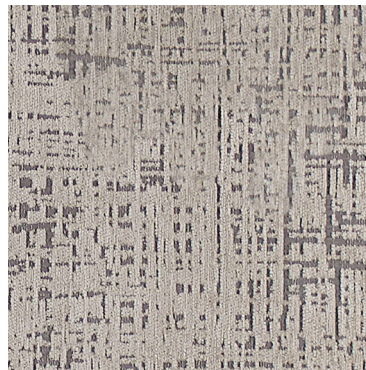
Lazuli



London



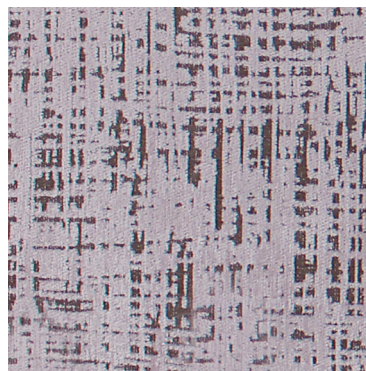
Mercury



Morel



Pharaoh



Sachet



Seashell

Technical Information

AIS

Pattern: Kai

Grade: A

Characteristics: Content 100% Polyester Backing Finish Synthetic Latex Blend i-Clean® Width 54" Weight 19.50 oz Repeat 13.19"H 30.31"W Directional Directional	Testing: Abrasion 100,000 Double Rubs Flammability Pass Lightfastness Class 4/40 hrs. min.
Certifications: N/A	Sustainability N/A
Cleaning Code W	Application Upholstery

Cleaning And Care Information

S: Solvent **W:** Water-Based Cleaner **WS:** Water/Solvent Cleaner **IC:** Inherently Cleanable

BC: Bleach Cleanable - Bleach Cleanable – 1 part bleach, 9 parts water = 10% bleach, 90% water solution. Do not clean/disinfect fabric for longer than 10 minutes using the 10% bleach solution. Always rinse promptly with clean water after applying the bleach solution. Failure to do so will void any and all warranties.

Dye Transfer Disclaimer

Certain clothing and accessory dyes (such as those used on denim jeans) may migrate to lighter colors. This phenomenon is increased by humidity and temperature and is irreversible. AIS will not assume responsibility for dye transfer caused by external contaminants. Please check compatibility when using this product in combination with painted or varnished surfaces.

Additional Information

i-Clean® fabrics are high-performance textiles designed for comfort, durability, and easy maintenance. Nano-based technology repels moisture and stains, allowing spills to bead up for quick, effortless cleanup.

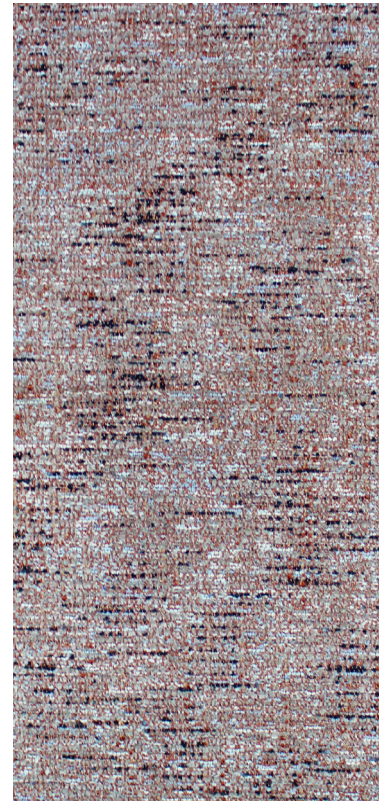
KAIFC

Kudos

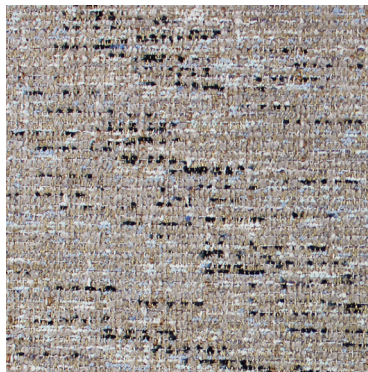
Grade A Upholstery



Cream



Ginger



Latte



Mocha



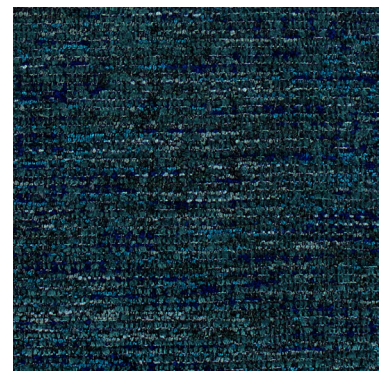
Pepper



Salsa



Sky



Teal

Technical Information

AIS

Pattern: Kudos

Grade: A

Characteristics: Content 100% Polyester Backing Synthetic Latex Backing Finish i-Clean® Width 54" Weight 24 oz Repeat None Directional Directional	Testing: Abrasion 100,000 Double Rubs Flammability Pass Lightfastness Class 4/40 hrs. min.
Certifications: N/A	Sustainability N/A
Cleaning Code W	Application Upholstery

Cleaning And Care Information

S: Solvent **W:** Water-Based Cleaner **WS:** Water/Solvent Cleaner **IC:** Inherently Cleanable

BC: Bleach Cleanable - Bleach Cleanable – 1 part bleach, 9 parts water = 10% bleach, 90% water solution. Do not clean/disinfect fabric for longer than 10 minutes using the 10% bleach solution. Always rinse promptly with clean water after applying the bleach solution. Failure to do so will void any and all warranties.

Dye Transfer Disclaimer

Certain clothing and accessory dyes (such as those used on denim jeans) may migrate to lighter colors. This phenomenon is increased by humidity and temperature and is irreversible. AIS will not assume responsibility for dye transfer caused by external contaminants. Please check compatibility when using this product in combination with painted or varnished surfaces.

Additional Information

i-Clean® fabrics are high-performance textiles designed for comfort, durability, and easy maintenance. Nano-based technology repels moisture and stains, allowing spills to bead up for quick, effortless cleanup.

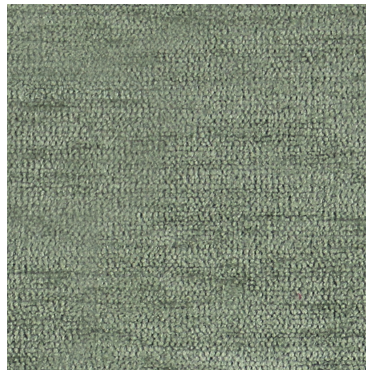
KUDOSFC

Luxique

Grade A Upholstery



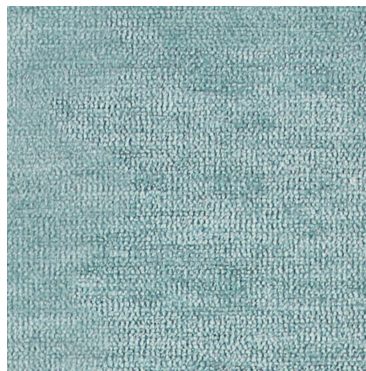
Adobe



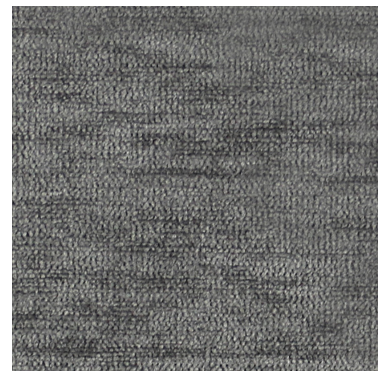
Aloe



Amethyst



Aqua



Chalice



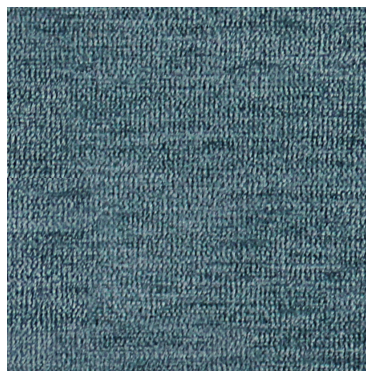
Cyprine



Mythos



Shark



Skylight



Wetstone

Technical Information

AIS

Pattern: Luxique

Grade: A

Characteristics: Content 100% Polyester Backing 100% Polyester Finish i-Clean® Width 54" Weight 16.75 oz Repeat None Directional Directional	Testing: Abrasion 100,000 Double Rubs Flammability Pass Lightfastness Class 4/40 hrs. min.
Certifications: N/A	Sustainability N/A
Cleaning Code W	Application Upholstery

Cleaning And Care Information

S: Solvent **W:** Water-Based Cleaner **WS:** Water/Solvent Cleaner **IC:** Inherently Cleanable

BC: Bleach Cleanable - Bleach Cleanable – 1 part bleach, 9 parts water = 10% bleach, 90% water solution. Do not clean/disinfect fabric for longer than 10 minutes using the 10% bleach solution. Always rinse promptly with clean water after applying the bleach solution. Failure to do so will void any and all warranties.

Dye Transfer Disclaimer

Certain clothing and accessory dyes (such as those used on denim jeans) may migrate to lighter colors. This phenomenon is increased by humidity and temperature and is irreversible. AIS will not assume responsibility for dye transfer caused by external contaminants. Please check compatibility when using this product in combination with painted or varnished surfaces.

Additional Information

i-Clean® fabrics are high-performance textiles designed for comfort, durability, and easy maintenance. Nano-based technology repels moisture and stains, allowing spills to bead up for quick, effortless cleanup.

LUXIQUEFC

Vidi

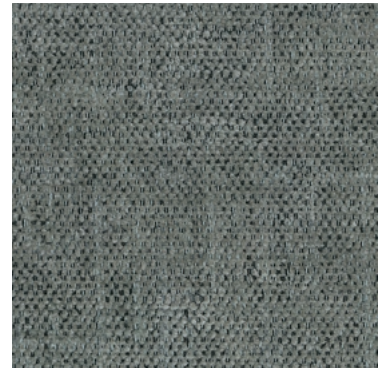
Grade A Upholstery



Almond



Crimson



Fog



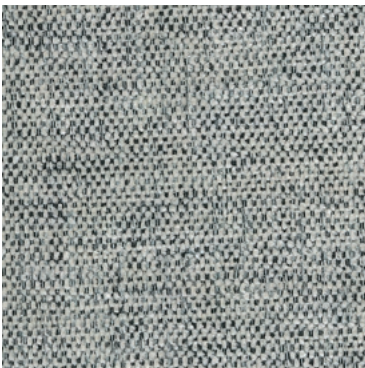
Goldenrod



Ivory



Jade



Pepper



Smoke



Twilight

Technical Information

AIS

Pattern: Vidi

Grade: A

Characteristics: Content 92% Polyester / 8% Recycled Cotton Backing Acrylic Finish None Width 55" Weight 11.8 oz Repeat None Directional Non-Directional	Testing: Abrasion 93,000 Double Rubs Flammability Pass Lightfastness Grade 5 ISO 105 B06
Certifications: N/A	Sustainability REACH Compliant
Cleaning Code W	Application Upholstery

Cleaning And Care Information

S: Solvent **W:** Water-Based Cleaner **WS:** Water/Solvent Cleaner **IC:** Inherently Cleanable

BC: Bleach Cleanable - Bleach Cleanable – 1 part bleach, 9 parts water = 10% bleach, 90% water solution. Do not clean/disinfect fabric for longer than 10 minutes using the 10% bleach solution. Always rinse promptly with clean water after applying the bleach solution. Failure to do so will void any and all warranties.

Dye Transfer Disclaimer

Certain clothing and accessory dyes (such as those used on denim jeans) may migrate to lighter colors. This phenomenon is increased by humidity and temperature and is irreversible. AIS will not assume responsibility for dye transfer caused by external contaminants. Please check compatibility when using this product in combination with painted or varnished surfaces.

Additional Information

VIDIFC

Vigor

Grade A Upholstery



City



Fossil



Java



Jazzy



Merlin



Storm



Teal



Whippet

Technical Information

AIS

Pattern: Vigor

Grade: A

Characteristics: Content 100% Polyester Backing Synthetic Latex Backing Finish i-Clean® Width 54" Weight 24.37 oz Repeat 1.10"W 0.47"H RR Directional Directional	Testing: Abrasion 100,000 Double Rubs Flammability Pass Lightfastness Class 4/40 hrs. min.
Certifications: N/A	Sustainability N/A
Cleaning Code W	Application Upholstery

Cleaning And Care Information

S: Solvent **W:** Water-Based Cleaner **WS:** Water/Solvent Cleaner **IC:** Inherently Cleanable

BC: Bleach Cleanable - Bleach Cleanable – 1 part bleach, 9 parts water = 10% bleach, 90% water solution. Do not clean/disinfect fabric for longer than 10 minutes using the 10% bleach solution. Always rinse promptly with clean water after applying the bleach solution. Failure to do so will void any and all warranties.

Dye Transfer Disclaimer

Certain clothing and accessory dyes (such as those used on denim jeans) may migrate to lighter colors. This phenomenon is increased by humidity and temperature and is irreversible. AIS will not assume responsibility for dye transfer caused by external contaminants. Please check compatibility when using this product in combination with painted or varnished surfaces.

Additional Information

i-Clean® fabrics are high-performance textiles designed for comfort, durability, and easy maintenance. Nano-based technology repels moisture and stains, allowing spills to bead up for quick, effortless cleanup.

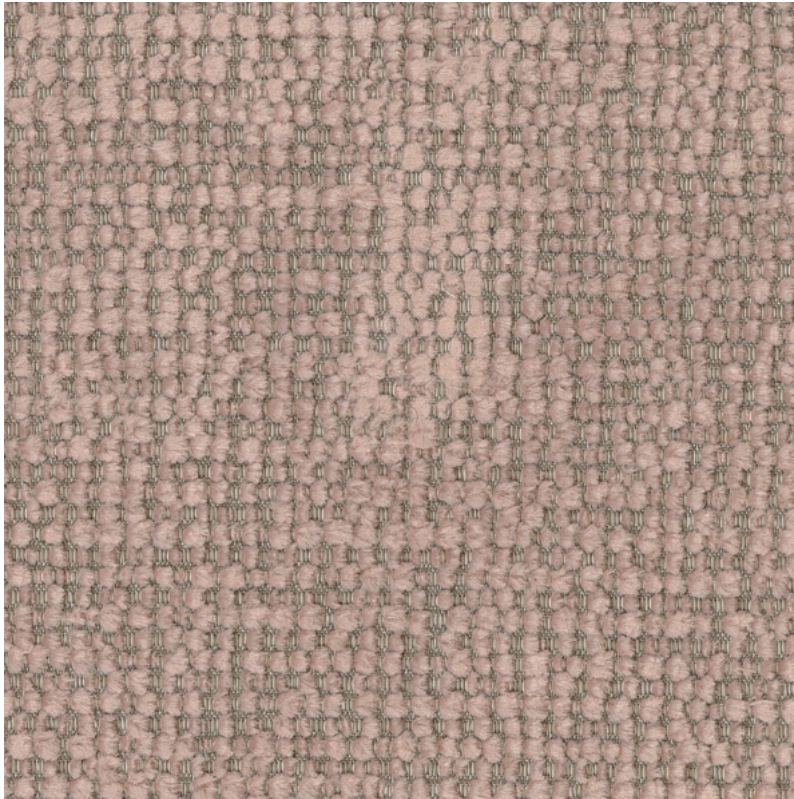
VIGORFC

Upholstery Fabrics

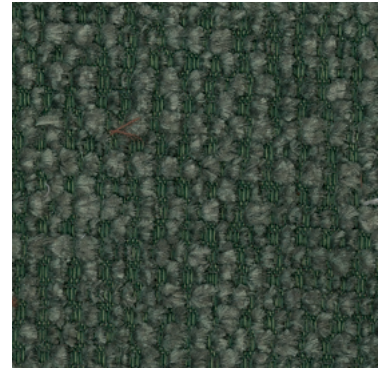
GRADE B

Billy

Grade B Upholstery



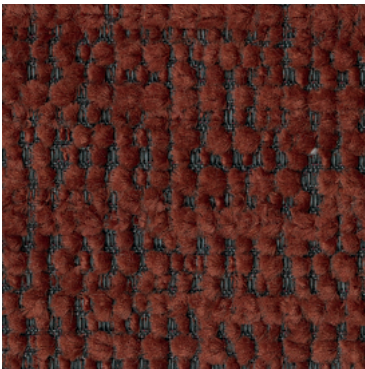
Dusk



Emerald



Fogstone



Garnet



Glacier



Graphite



Noir



Sapphire



Snowdrift

Technical Information

AIS

Pattern: Billy

Grade: B

Characteristics: Content 59% Recycled Polyester / 35% Polyester / 6% Recycled Cotton Backing Acrylic Finish None Width 55" Weight 14.16oz Repeat None Directional Non-Directional	Testing: Abrasion 378,000 Double Rubs Flammability Pass Lightfastness Grade 5 ISO 105 B06
Certifications: N/A	Sustainability REACH Compliant
Cleaning Code W	Application Upholstery

Cleaning And Care Information

S: Solvent **W:** Water-Based Cleaner **WS:** Water/Solvent Cleaner **IC:** Inherently Cleanable

BC: Bleach Cleanable - Bleach Cleanable – 1 part bleach, 9 parts water = 10% bleach, 90% water solution. Do not clean/disinfect fabric for longer than 10 minutes using the 10% bleach solution. Always rinse promptly with clean water after applying the bleach solution. Failure to do so will void any and all warranties.

Dye Transfer Disclaimer

Certain clothing and accessory dyes (such as those used on denim jeans) may migrate to lighter colors. This phenomenon is increased by humidity and temperature and is irreversible. AIS will not assume responsibility for dye transfer caused by external contaminants. Please check compatibility when using this product in combination with painted or varnished surfaces.

Additional Information

Picea

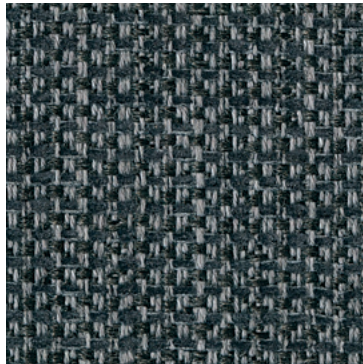
Grade B Upholstery



Cobalt



Ledger



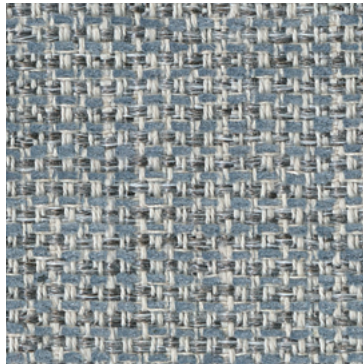
Onyx



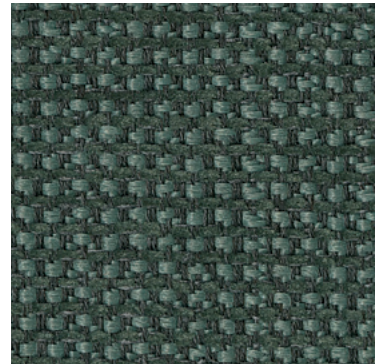
Pinnacle



Sterling



Summit



Verdant

Technical Information

AIS

Pattern: Picea

Grade: B

Characteristics: Content 62% Recycled Polyester / 30% Polyolefin / 8% Recycled Cotton Backing Acrylic Finish None Width 55" Weight 12.95 oz Repeat None Directional Non-Directional	Testing: Abrasion 153,000 Double Rubs Flammability Pass Lightfastness Grade 5 ISO 105 B06
Certifications: N/A	Sustainability REACH Compliant
Cleaning Code W	Application Upholstery

Cleaning And Care Information

S: Solvent **W:** Water-Based Cleaner **WS:** Water/Solvent Cleaner **IC:** Inherently Cleanable

BC: Bleach Cleanable - Bleach Cleanable – 1 part bleach, 9 parts water = 10% bleach, 90% water solution. Do not clean/disinfect fabric for longer than 10 minutes using the 10% bleach solution. Always rinse promptly with clean water after applying the bleach solution. Failure to do so will void any and all warranties.

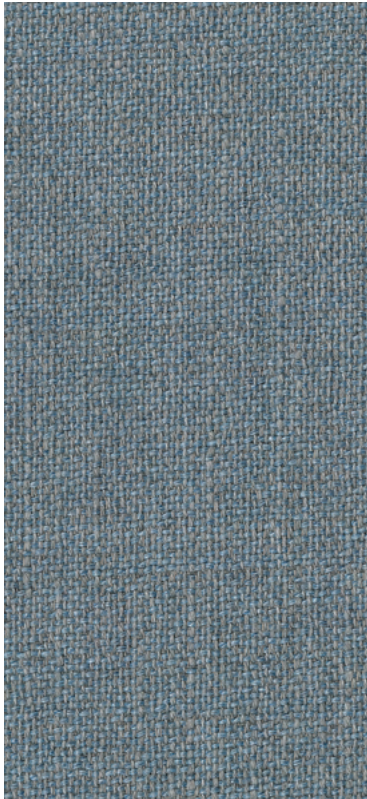
Dye Transfer Disclaimer

Certain clothing and accessory dyes (such as those used on denim jeans) may migrate to lighter colors. This phenomenon is increased by humidity and temperature and is irreversible. AIS will not assume responsibility for dye transfer caused by external contaminants. Please check compatibility when using this product in combination with painted or varnished surfaces.

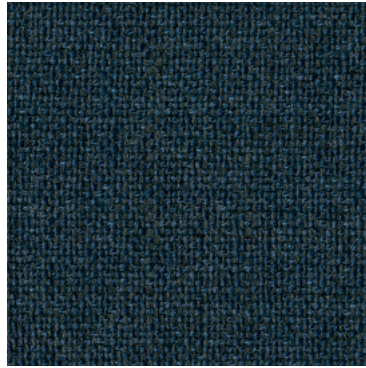
Additional Information

Pike

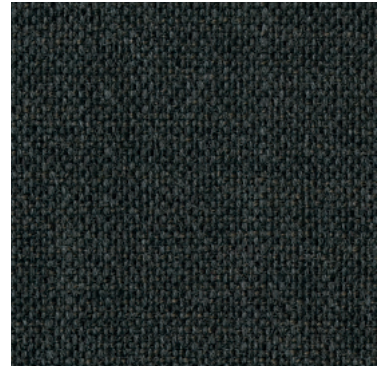
Grade B Upholstery



Drift



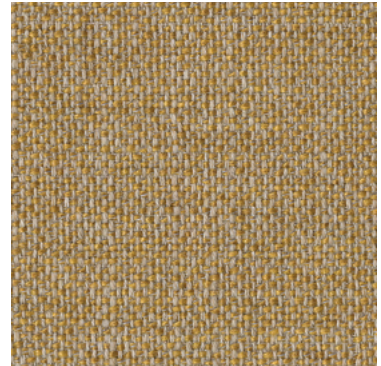
Haven



Jet



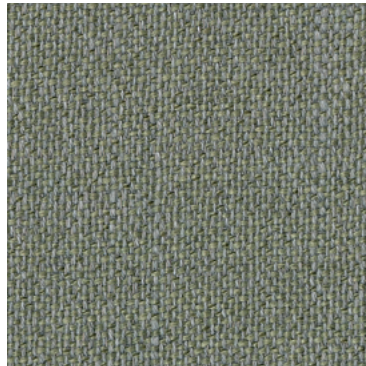
Linen



Marigold



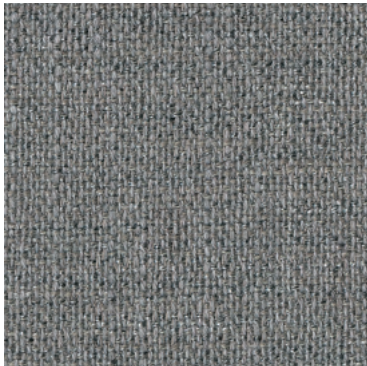
Olive



Sage



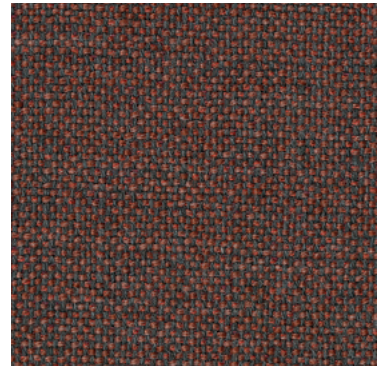
Sandstone



Shale



Shore



Terra

Technical Information

AIS

Pattern: Pike

Grade: B

Characteristics: Content 43% Acrylic / 42% Recycled Polyester / 8% Recycled Cotton / 7% Polyester Backing Acrylic Finish None Width 55" Weight 12.71 oz Repeat None Directional Non-Directional	Testing: Abrasion 90,000 Double Rubs Flammability Pass Lightfastness Grade 5 ISO 105 B06
Certifications: N/A	Sustainability REACH Compliant
Cleaning Code W	Application Upholstery

Cleaning And Care Information

S: Solvent **W:** Water-Based Cleaner **WS:** Water/Solvent Cleaner **IC:** Inherently Cleanable

BC: Bleach Cleanable - Bleach Cleanable – 1 part bleach, 9 parts water = 10% bleach, 90% water solution. Do not clean/disinfect fabric for longer than 10 minutes using the 10% bleach solution. Always rinse promptly with clean water after applying the bleach solution. Failure to do so will void any and all warranties.

Dye Transfer Disclaimer

Certain clothing and accessory dyes (such as those used on denim jeans) may migrate to lighter colors. This phenomenon is increased by humidity and temperature and is irreversible. AIS will not assume responsibility for dye transfer caused by external contaminants. Please check compatibility when using this product in combination with painted or varnished surfaces.

Additional Information

Vertical Fabrics

GRADE A

Anchorage

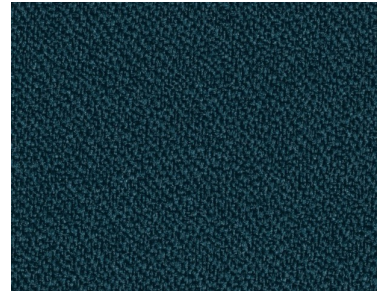
Grade A Upholstery



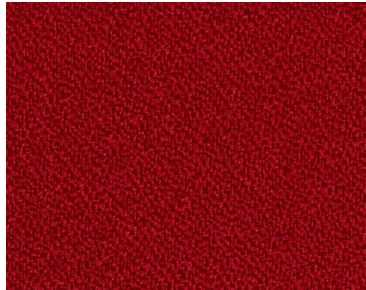
Asteroid



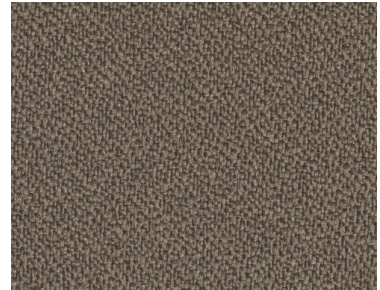
Birch



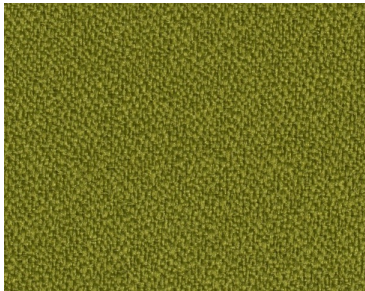
Deep Water



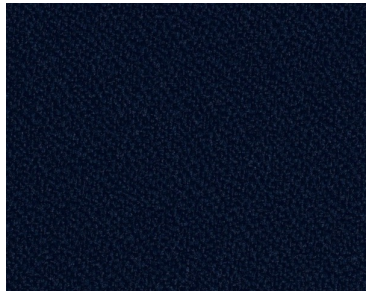
Geranium



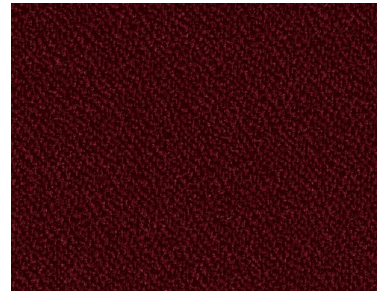
Goose



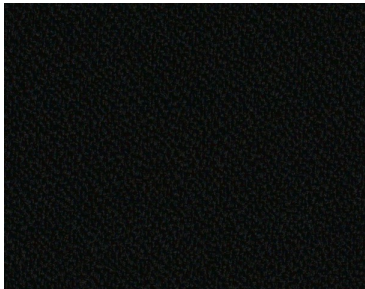
Green Apple



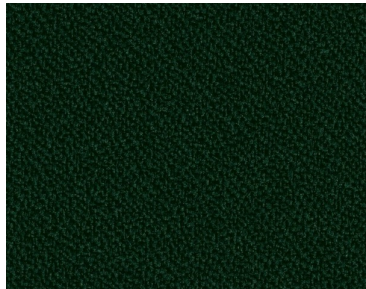
Midnight



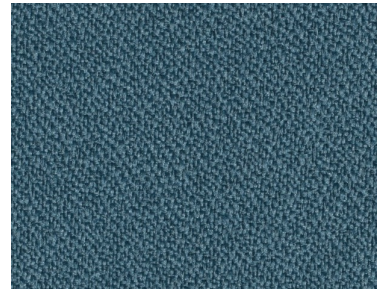
Mulberry



Onyx



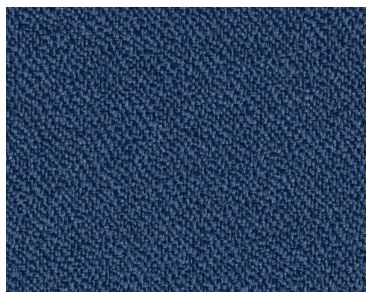
Pine Needle



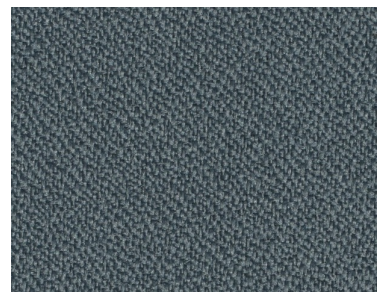
Quarry Blue



Shadow



Thistle



Wolf

Technical Information

AIS

Pattern: Anchorage

Grade: A

Characteristics: Content 100% Post-Consumer Recycled Polyester Backing None Finish None Width 66" Weight 15 oz Repeat None Directional Directional	Testing: Abrasion 250,000 Double Rubs Flammability Pass Lightfastness Class 4/40 hrs. min.
Certifications: LEED	Sustainability Recycled Content
Cleaning Code WS	Application Panel/Acoustic

Cleaning And Care Information

S: Solvent **W:** Water-Based Cleaner **WS:** Water/Solvent Cleaner **IC:** Inherently Cleanable

BC: Bleach Cleanable - Bleach Cleanable – 1 part bleach, 9 parts water = 10% bleach, 90% water solution. Do not clean/disinfect fabric for longer than 10 minutes using the 10% bleach solution. Always rinse promptly with clean water after applying the bleach solution. Failure to do so will void any and all warranties.

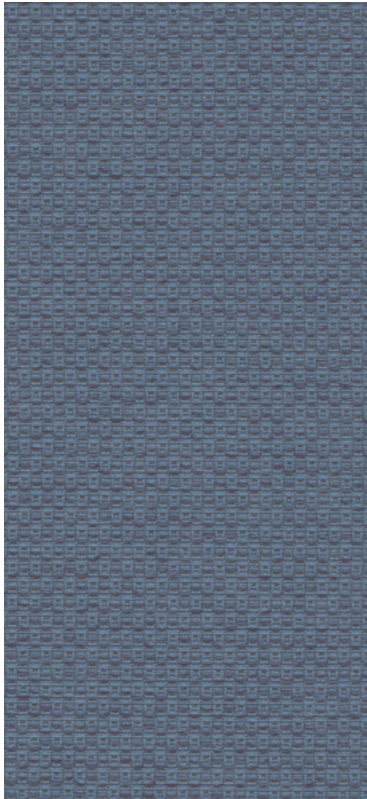
Dye Transfer Disclaimer

Certain clothing and accessory dyes (such as those used on denim jeans) may migrate to lighter colors. This phenomenon is increased by humidity and temperature and is irreversible. AIS will not assume responsibility for dye transfer caused by external contaminants. Please check compatibility when using this product in combination with painted or varnished surfaces.

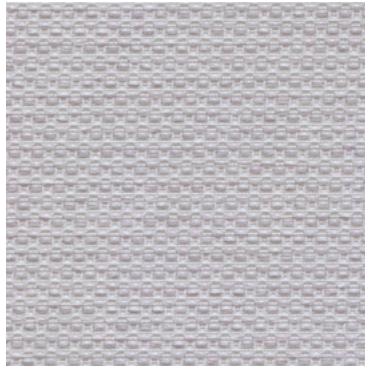
Additional Information

Chase

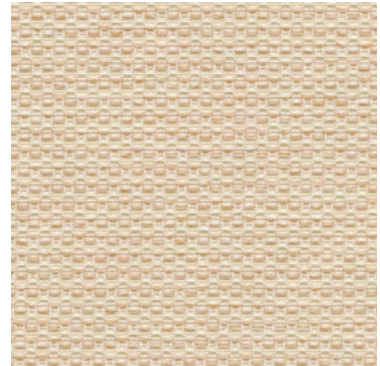
Grade A Vertical



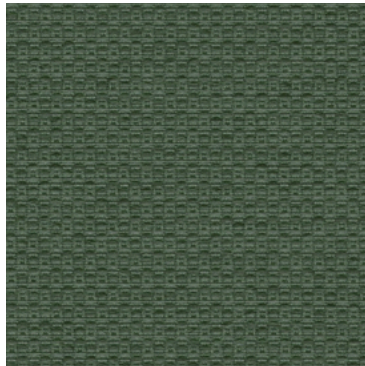
Chambray



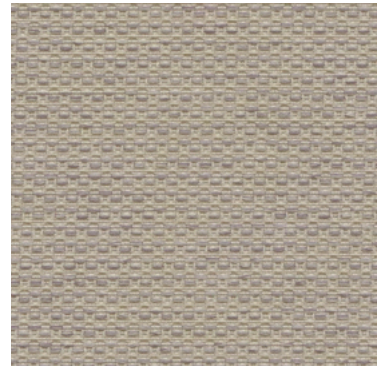
Coin



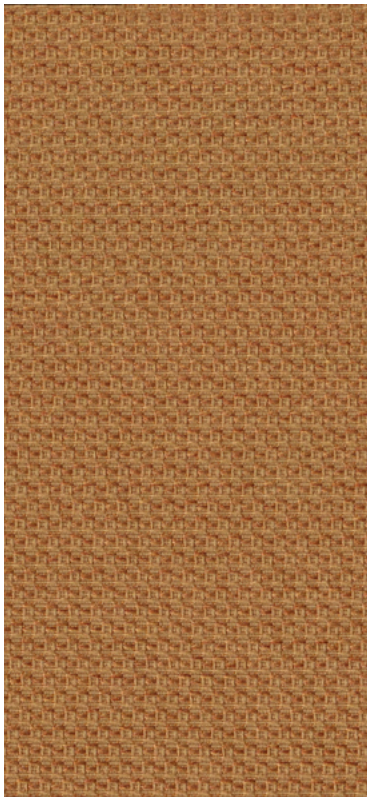
Ecrú



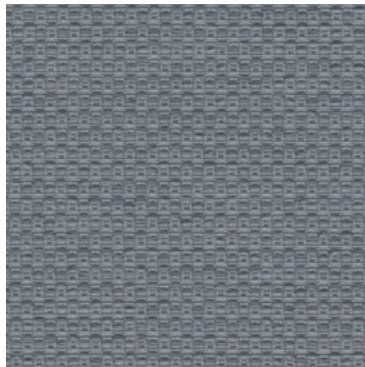
Moss



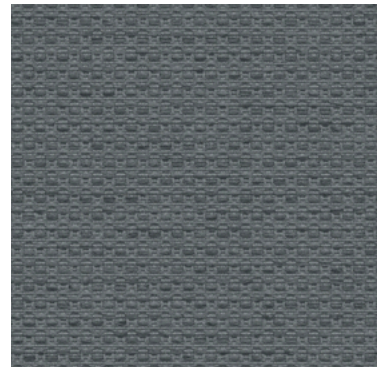
Mushroom



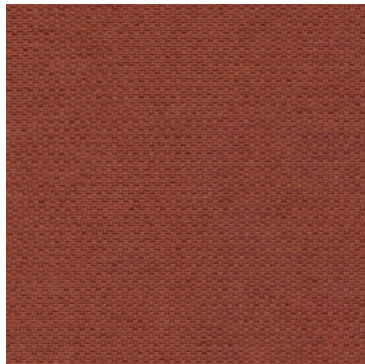
Ochre



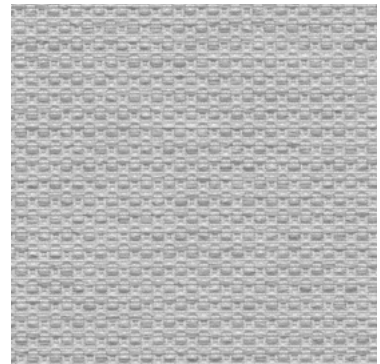
Pewter



Pumice



Red Clay



Shadow

Technical Information

AIS

Pattern: Chase

Grade: A

Characteristics: Content 74% Polyester / 26% Post-consumer recycled Polyester Backing None Finish None Width 66" Weight 13.3 oz Repeat None Directional Directional	Testing: Flammability ASTM E84 Class I or A Lightfastness Class 4/40 hrs. min.
Certifications: UL Approved LEED	Sustainability Recycled Content; PFAS-free, PVC-free, Antimicrobial-free
Cleaning Code WS	Application Vertical Surface

Cleaning And Care Information

S: Solvent **W:** Water-Based Cleaner **WS:** Water/Solvent Cleaner **IC:** Inherently Cleanable

BC: Bleach Cleanable - Bleach Cleanable – 1 part bleach, 9 parts water = 10% bleach, 90% water solution. Do not clean/disinfect fabric for longer than 10 minutes using the 10% bleach solution. Always rinse promptly with clean water after applying the bleach solution. Failure to do so will void any and all warranties.

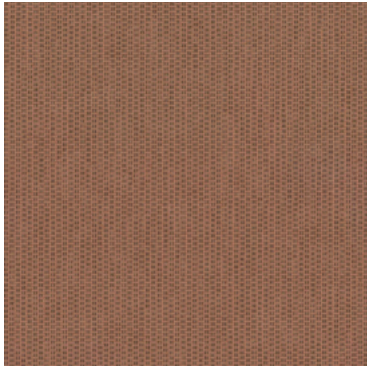
Dye Transfer Disclaimer

Certain clothing and accessory dyes (such as those used on denim jeans) may migrate to lighter colors. This phenomenon is increased by humidity and temperature and is irreversible. AIS will not assume responsibility for dye transfer caused by external contaminants. Please check compatibility when using this product in combination with painted or varnished surfaces.

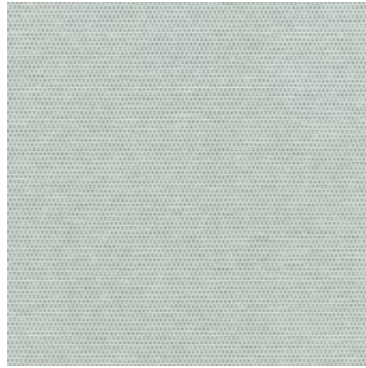
Additional Information

Ease

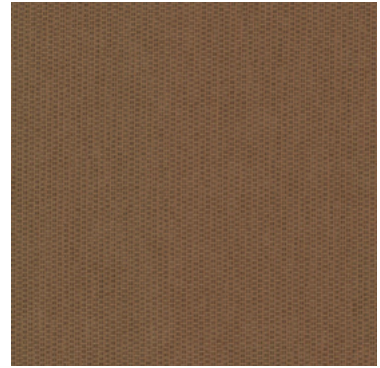
Grade A Vertical



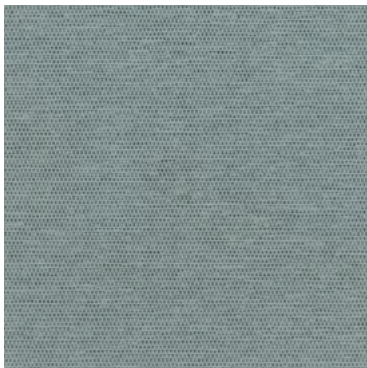
Bloom



Dew



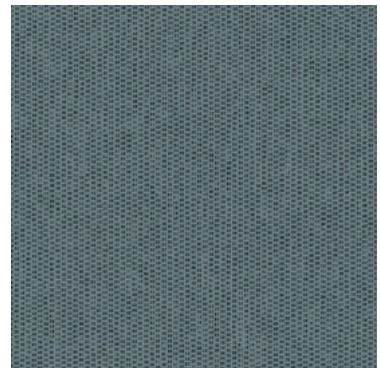
Earthbound



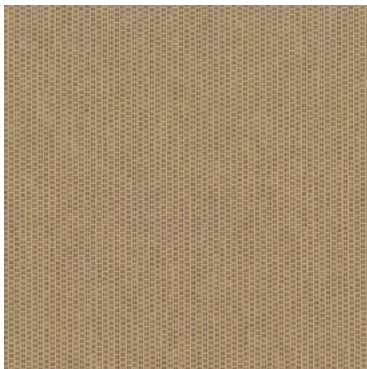
Feather



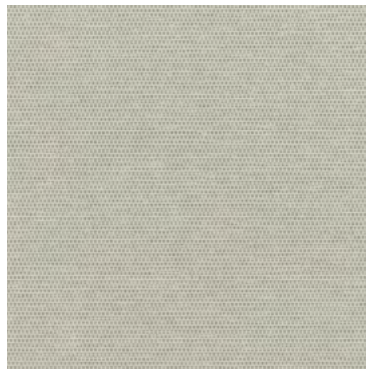
Fog



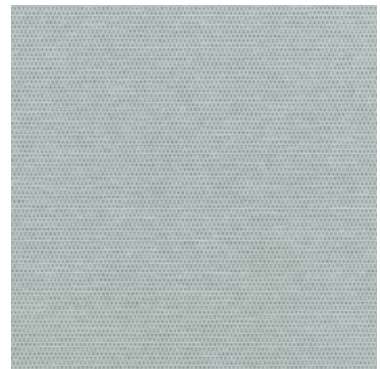
Glacial



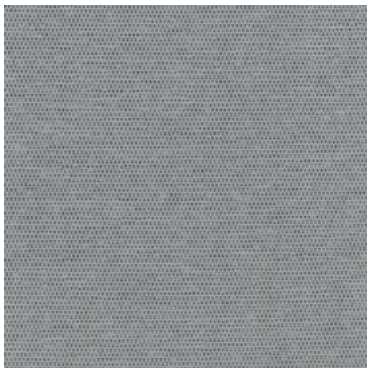
Glow



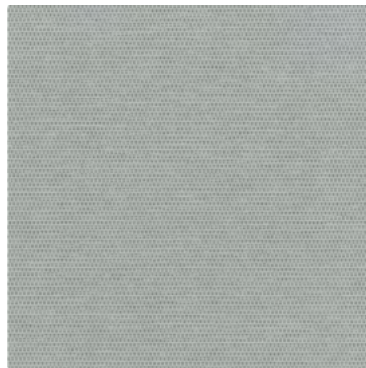
Halo



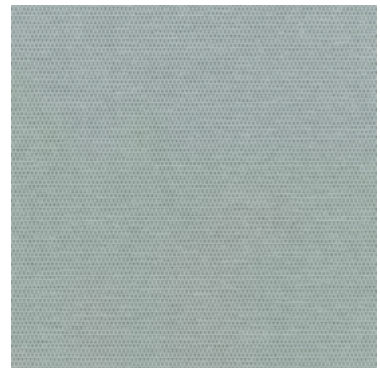
Moonlight



Nebula



Pebble



Stratus

Technical Information

AIS

Pattern: Ease

Grade: A

Characteristics: Content 100% Recycled Biodegradable Polyester Backing None Finish None Width 66" Weight 11.5 oz Repeat None Directional Directional	Testing: Flammability ASTM E84 Class I or A Lightfastness Grade 4.5 min. at 40 hrs
Certifications: UL Approved LEED	Sustainability Biodegradable Clean impact Textiles™; PFAS-free, PVC-free, Antimicrobial-free; Recycled Content
Cleaning Code WS	Application Vertical Surface

Cleaning And Care Information

S: Solvent **W:** Water-Based Cleaner **WS:** Water/Solvent Cleaner **IC:** Inherently Cleanable

BC: Bleach Cleanable - Bleach Cleanable – 1 part bleach, 9 parts water = 10% bleach, 90% water solution. Do not clean/disinfect fabric for longer than 10 minutes using the 10% bleach solution. Always rinse promptly with clean water after applying the bleach solution. Failure to do so will void any and all warranties.

Dye Transfer Disclaimer

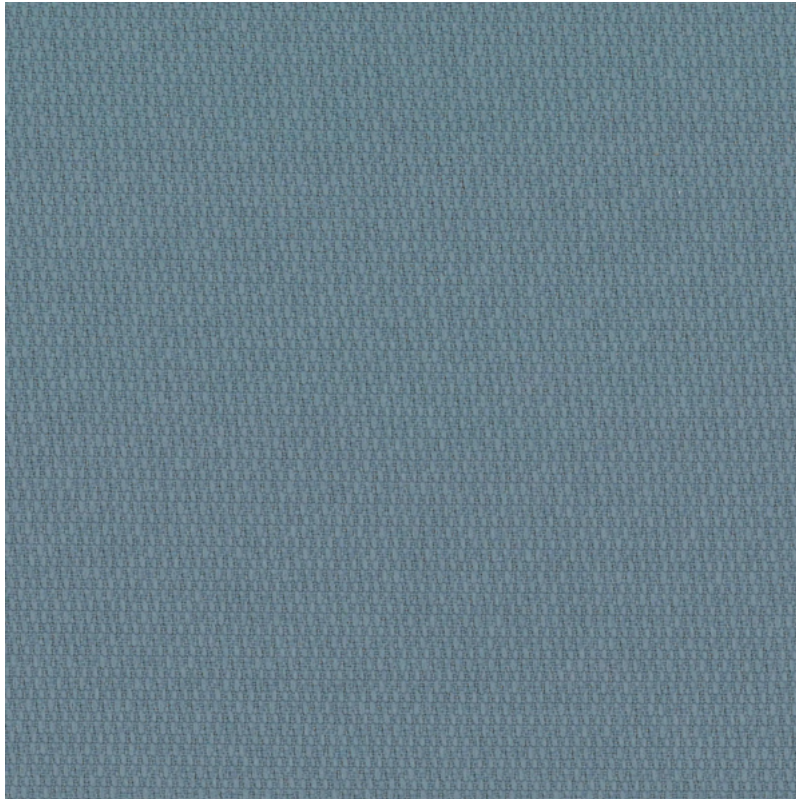
Certain clothing and accessory dyes (such as those used on denim jeans) may migrate to lighter colors. This phenomenon is increased by humidity and temperature and is irreversible. AIS will not assume responsibility for dye transfer caused by external contaminants. Please check compatibility when using this product in combination with painted or varnished surfaces.

Additional Information

CLEAN IMPACT TEXTILES™ fabrics are made from repurposed throwaway materials and combine innovative technologies that minimize their environmental impact at the end of their useful life.

Expanse

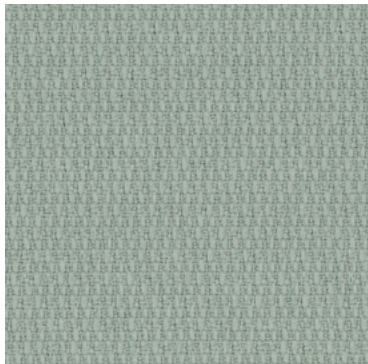
Grade A Vertical



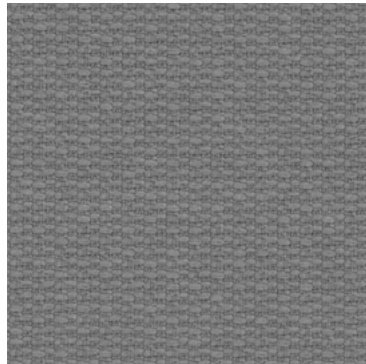
Breeze



Driftwood



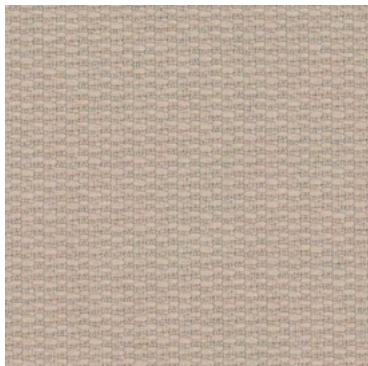
Mineral



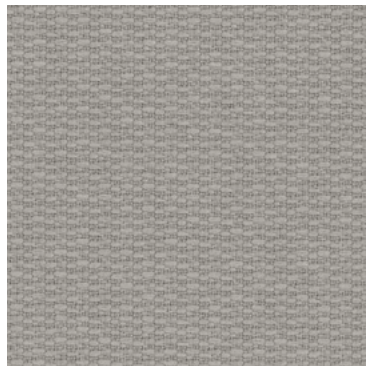
Morel



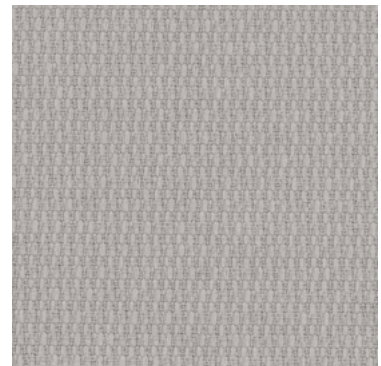
Opaline



Sand



Steel



Vapor

Technical Information

AIS

Pattern: Expanse

Grade: A

Characteristics: Content 100% Post-Consumer Recycled Biodegradable Polyester Backing None Finish None Width 66" Weight 11.4 oz Repeat None Directional Directional	Testing: Flammability ASTM E84 Class I or A Lightfastness Grade 4.5 min. at 40 hrs
Certifications: UL Approved LEED	Sustainability Biodegradable Clean impact Textiles™; Recycled Content; PFAS-free, PVC-free, Antimicrobial-free
Cleaning Code WS	Application Vertical Surface

Cleaning And Care Information

S: Solvent **W:** Water-Based Cleaner **WS:** Water/Solvent Cleaner **IC:** Inherently Cleanable

BC: Bleach Cleanable - Bleach Cleanable – 1 part bleach, 9 parts water = 10% bleach, 90% water solution. Do not clean/disinfect fabric for longer than 10 minutes using the 10% bleach solution. Always rinse promptly with clean water after applying the bleach solution. Failure to do so will void any and all warranties.

Dye Transfer Disclaimer

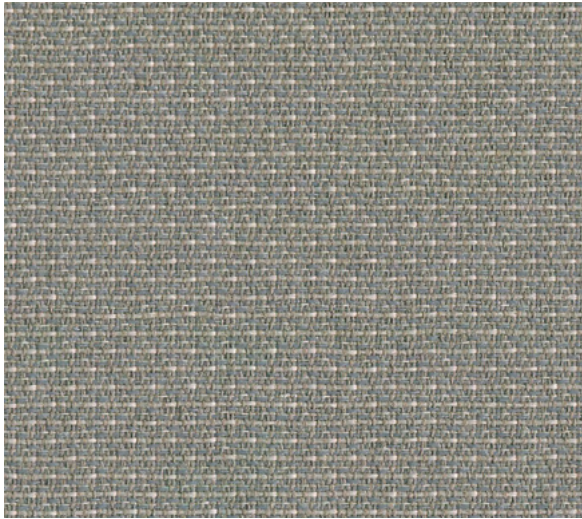
Certain clothing and accessory dyes (such as those used on denim jeans) may migrate to lighter colors. This phenomenon is increased by humidity and temperature and is irreversible. AIS will not assume responsibility for dye transfer caused by external contaminants. Please check compatibility when using this product in combination with painted or varnished surfaces.

Additional Information

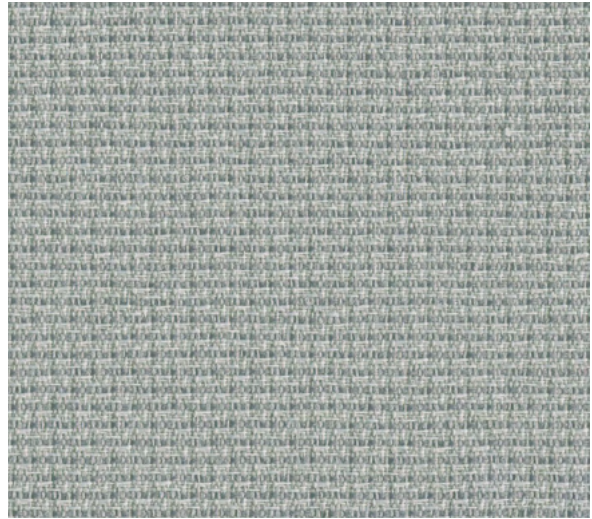
CLEAN IMPACT TEXTILES™ fabrics are made from repurposed throwaway materials and combine innovative technologies that minimize their environmental impact at the end of their useful life.

Pursuit

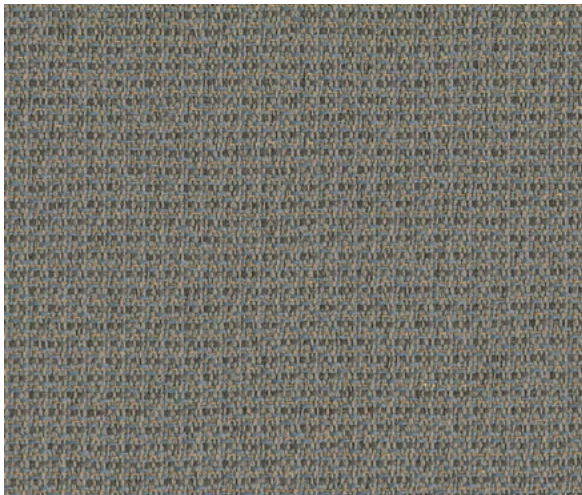
Grade A Vertical



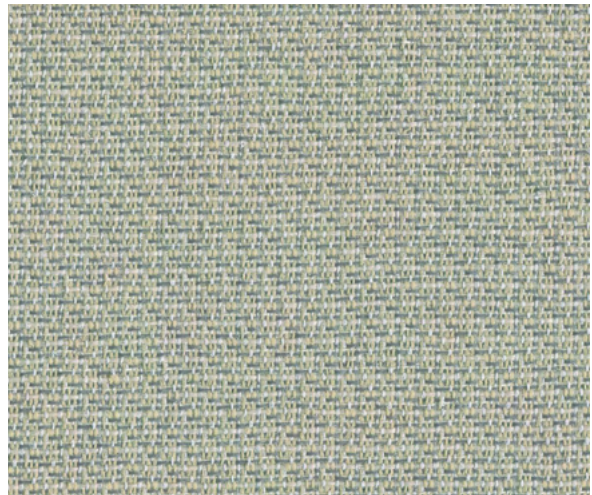
Cement



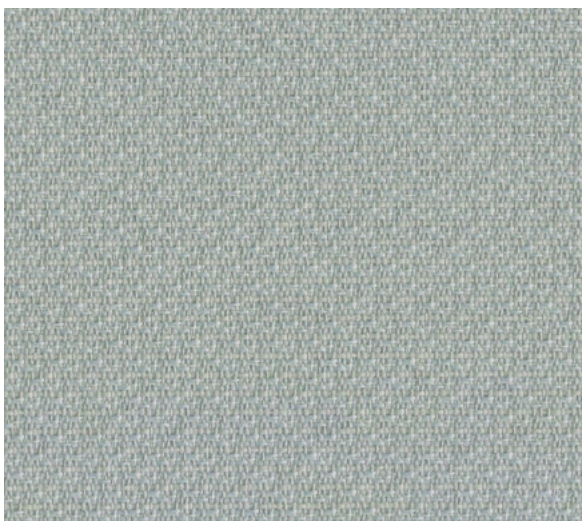
Dove



Elephant



Mist Grey



Whisper



White Linen

Technical Information

AIS

Pattern: Pursuit

Grade: A

Characteristics: Content 100% Pre-Consumer Recycled Polyester Backing None Finish None Width 66" Weight 9.1 oz Repeat None Directional Directional	Testing: Flammability ASTM E84 Class I or A Lightfastness Class 4/40 hrs. min.
Certifications: UL Approved Facts Compliant LEED	Sustainability Terratex™ - 100% Recycled & Recyclable; Biodegradable; Recycled Content; PFAS-free; PVC-Free; Antimicrobial-Free
Cleaning Code WS & Bleach Cleanable	Application Vertical Surface

Cleaning And Care Information

S: Solvent **W:** Water-Based Cleaner **WS:** Water/Solvent Cleaner **IC:** Inherently Cleanable

BC: Bleach Cleanable - Bleach Cleanable – 1 part bleach, 9 parts water = 10% bleach, 90% water solution. Do not clean/disinfect fabric for longer than 10 minutes using the 10% bleach solution. Always rinse promptly with clean water after applying the bleach solution. Failure to do so will void any and all warranties.

Dye Transfer Disclaimer

Certain clothing and accessory dyes (such as those used on denim jeans) may migrate to lighter colors. This phenomenon is increased by humidity and temperature and is irreversible. AIS will not assume responsibility for dye transfer caused by external contaminants. Please check compatibility when using this product in combination with painted or varnished surfaces.

Additional Information