

UPHOLSTERY FABRIC OPTIONS

Seating & Cushions



Stinson

AI**S**

Click on any image to view all colors, see fabric specifications, and order memo samples.



Apprentice
Phantom



Apprentice
Classic



Apprentice
Heron



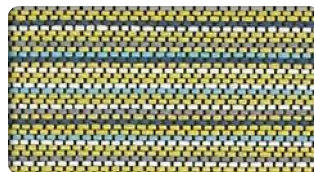
Apprentice
Ember



Lateral
Skyline



Lateral
Mist



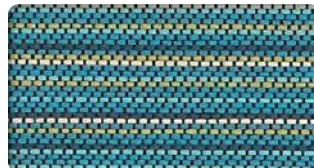
Lateral
Citrine



Lateral
Horizon



Lateral
Sterling



Lateral
Calypso



Lateral
Sangria



Outlander
Charcoal



Outlander
Limestone



Outlander
Fog



Outlander
Electric



Outlander
Aquamarine



Outlander
Amber



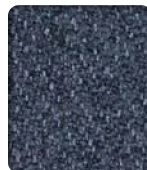
Outlander
Mars



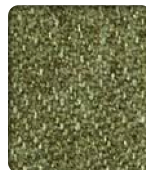
Outlander
Cashmere



Outlander
Flannel



Outlander
Dark Blue



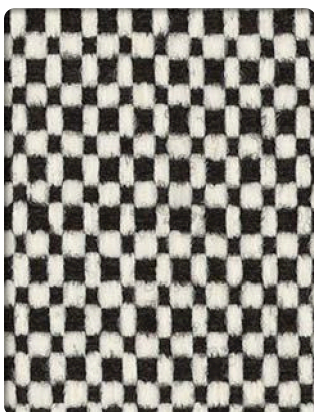
Outlander
Fairway



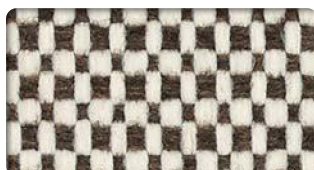
Outlander
Acorn



Outlander
Cabernet



Square One
Black & White



Square One
Misto



Square One
Skyway



Square One
Glow



Square One
Charcoal



Square One
Dolphin



Square One
Grasshopper



Square One
Birdy



Square One
Fleece



Square One
Oak

Click on any image to view all colors, see fabric specifications, and order memo samples.



Apprentice
Diplomat



Apprentice
Mystic



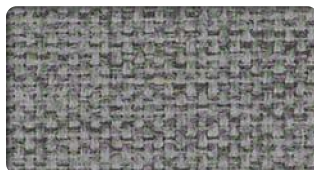
Apprentice
Eucalyptus



Apprentice
Fleece



Flanders
Bermuda



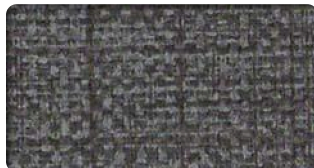
Flanders
Slate



Flanders
Coconut



Flanders
Fossil



Flanders
Charcoal



Flanders
Polynesia



Flanders
Lifesaver



Hopsack
Fjord



Hopsack
Cori



Hopsack
Oslo



Hopsack
Hemlock



Hopsack
Willow



Hopsack
Twine



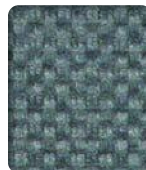
Hopsack
Stucco



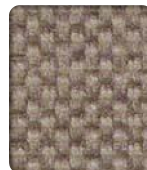
Hopsack
Carbon



Hopsack
Rain



Hopsack
Shadow



Hopsack
Earth



Hopsack
Bamboo



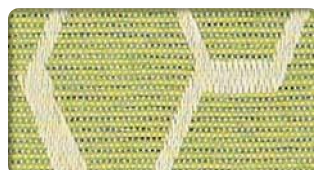
Hopsack
Mystic



Charlotte
Lagoon



Charlotte
Lapis



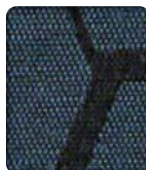
Charlotte
Peridot



Charlotte
Sunset



Charlotte
Graphite



Charlotte
Ink



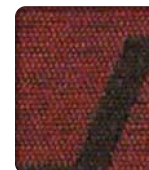
Charlotte
Silver



Charlotte
Tungsten



Charlotte
Marzipan



Charlotte
Cherrywood

Stinson Upholstery

Technical Information

Pattern 54"	Content & Backing	Certification	Weight	Pattern Repeat	Finish	Abrasion Wyznbeek	Lightfastness	Flammability*	Cleaning Code	Grade**
Apprentice Directional	100% Polypropylene Backing: Acrylic	GREENGUARD GOLD LBC Red List Free	17.03 oz.	None	None / Optional Finishes Available	90,000 Double Rubs	Class 4.5 300 hours	Cal.117-2013 NFPA 260 / UFAC Class 1	W-S, BC	B
Charlotte Directional	47% Post Industrial Recycled Polyester, 27% Polyester, 26% Post Consumer Recycled Polyester Backing: Acrylic	GREENGUARD GOLD LBC Red List Free	11.05 oz.	14.875" h, 17.125" v	Non-PFOA / Non-PFAS / Water-Based Stain Resistant	72,000 Double Rubs	Class 4.0 40 hours	Cal.117-2013 NFPA 260 / UFAC Class 1	W-S, BC	D
Flanders Directional	Non-Phthalate Vinyl Backing: Polyester Inherent Fluid Barrier	GREENGUARD GOLD	30 oz.	None	Advanced Soil and Stain Resistant Topcoat	250,000^ Double rubs	Class 4.5 300 hours	Cal.117-2013 NFPA 260 / UFAC Class 1	W-S, BC	E
Hopsack Directional	Non-Phthalate Vinyl Backing: Polyester Inherent Fluid Barrier	GREENGUARD GOLD	30 oz.	None	Advanced Soil and Stain Resistant Topcoat	100,000^ Double Rubs	Class 4.5 1000 hours	Cal.117-2013 NFPA 260 / UFAC Class 1	W-S, BC	E
Lateral Directional	65% Post Consumer Recycled Polyester, 35% Polyester Backing: Acrylic	GREENGUARD GOLD	10.05 oz.	0.0" h, 4.375" v	Non-PFAS / Water-Based Stain Resistant	120,000^ Double Rubs	Class 5 60 hours	Cal.117-2013 NFPA 260 / UFAC Class 1	W-S, BC	D
Outlander Directional	100% Polyester Backing: SBR Synthetic	GREENGUARD GOLD LBC Red List Free	15.05 oz.	None	Non-PFOA / Non-PFAS / Water-Based Stain Resistant	100,000^ Double Rubs	Class 4.5 40 hours	Cal.117-2013 NFPA 260 / UFAC Class 1 ASTM E-84 (Unadhered)	W-S, BC	E
Square One Directional	63% Polyester, 37% Olefin Backing: Acrylic	GREENGUARD GOLD LBC Red List Free	19.6 oz.	.125" h, .25" v	Non-PFOA / Non-PFAS / Water-Based Stain Resistant	87,000 Double Rubs	Class 4.0 40 hours	Cal.117-2013 NFPA 260 / UFAC Class 1	W-S, BC	E

REDUCED ENVIRONMENTAL IMPACT

These products are GREENGUARD GOLD Certified for low chemical and particle emissions to UL standard UL 2818 and may contribute to LEED Certification

No FR Additives / No Antimicrobial Additives

CARE AND CLEANING INFORMATION

WS: Water / Solvent Cleaner

BC: Bleach Cleanable – 1 part bleach, 9 parts water = 10% Bleach, 90% Water solution. **Do not clean / disinfect fabric for longer than 10 minutes using the 10% bleach solution. Always rinse promptly with clean water after applying the bleach solution. Failure to do so will void any and all warranties.**

DYE TRANSFER DISCLAIMER

Certain clothing and accessory dyes (such as those used in denim jeans) may migrate to lighter colors. This phenomenon is increased by humidity and temperature and is irreversible. Stinson will not assume responsibility for dye transfer caused by external contaminants. Please check compatibility when using these products in combination with painted or varnished surfaces.

ADDITIONAL INFORMATION

^Abrasion test results exceeding ACT Performance Guidelines are not an indicator of product lifespan. Multiple factors affect fabric durability and appearance retention.

*This term and any corresponding data refer to the typical performance in the tests indicated and should not be construed to imply the behavior of this or any other material under actual fire conditions.

**Grades shown are for 2024 and may shift due to pricing volatility. Please check with AIS to confirm fabric grade prior to ordering.

For memo samples and complete specifications, visit cfstinson.com

Dye lots may vary slightly from samples shown

All colorways for each pattern featured on this card are available through the Alliance Program



These fabrics meet or exceed these ACT Performance Guidelines
*Certification Marks owned by ACT®

To order memos, please visit www.cfstinson.com.

To view samples online, visit www.ais-inc.com/finishcenter

800.434.7400 | 978.562.7500 | www.ais-inc.com | 09/2024 | ALLSTIFC

AIS