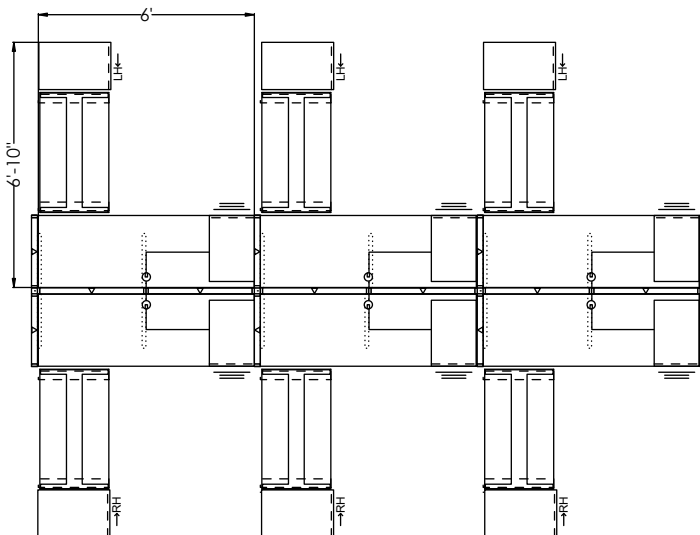


DIVI WORKSTATIONS®

DIVITYP011

AIS | IDEA STARTERS



#	Part Number	Description	Quantity	Ext. List
1	X-SARTL421524	CBX Side Access Roll Out Tower LH 24Dx42Hx15W	3	\$13,788.00
2	X-SARTR421524	CBX Side Access Roll Out Tower RH 24Dx42Hx15W	3	\$13,788.00
3	E-DP6GFPB	Snap-In Data Plate w/6 Gang Face - Black	12	\$432.00
4	E-MW8W4DO1	Black Duplex Outlet - Line 1	3	\$243.00
5	E-MW8W4DO2	Black Duplex Outlet - Line 2	3	\$243.00
6	E-MW8W4DO3	Black Duplex Outlet - Line 3	3	\$243.00
7	E-MW8W4DO4	Black Duplex Outlet - Line 4 - Dedicated	3	\$243.00
8	E-MW8W4PJ36E	57 in. Electrical Jumper (Pt 36E & Vt 48)	2	\$712.00
9	E-MX8W4PTPC2121	in. Electrical Jumper (Extended Panel To Panel)	1	\$231.00
10E	UN8W4BIFL	LH Receptacle Mounted Base Infeed - 72L - 8 Wire, 4 Circuit	1	\$550.00
11P	DLBS3W	DIVI LINEAR BASE RACEWAY SHROUD 3-WAY 90 DEGREES	2	\$54.00
12P	DLFPPM5024	DIVI LINEAR HARD PANEL-PWR-PERM MONO- 50H X 24W	1	\$1,087.00
13P	DLFPPM5036	DIVI LINEAR HARD PANEL-PWR-PERM MONO- 50H X 36W	6	\$7,404.00
14P	DLFRPM5024	DIVI LINEAR Hard PANEL -NPWR-PERM MONO- 50H X 24W	7	\$5,068.00
15P	DLSEOR	DIVI LINEAR BASE RACEWAY SHROUD END OF RUN	8	\$216.00
16WPS	UNCT24L	Regular Cantilever - Left Hand - 24D	5	\$490.00
17WPS	UNCT24R	Regular Cantilever - Right Hand - 24D	7	\$686.00
18T	RCR244229HG	TBL, REC, 2mm, 24Dx42Wx29H, HAL, E SERIES GLD - 2 STAGE	6	\$16,794.00
19S	PEDBBFJ24	Pedestal - B/B/F - 24D	6	\$6,690.00
20S	SHFLDV36	Linear End Shelf 36W - Divi	6	\$2,034.00
21W	WS2472	Rectangular - 2mm Edge - 24D x 72W	6	\$5,400.00
			Total List	\$76,396.00

Pricing shown is for budgetary purposes only and subject to change. Pricelist Dates: 4/1/24. Contact your local Rep for a quote.
 Availability of finishes and materials shown may vary due to manufacturers' lifecycle management.
 More Idea Starters available at <https://www.ais-inc.com/resources/idea-starters>