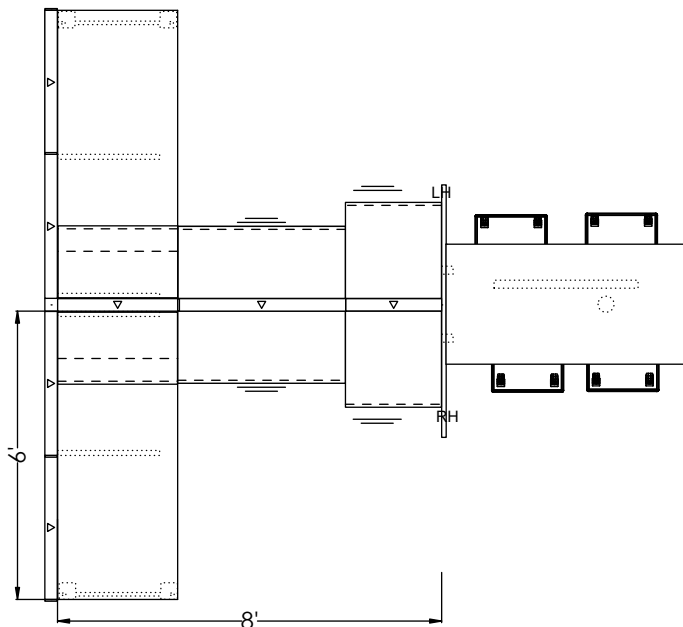


MATRIX WORKSTATIONS[®]

MTXTYP007

AIS | IDEA STARTERS



# Part Number	Description	Quantity	Ext. List
1	F-CUBE181818 Volker Cube w/Casters - 18x18x18	4	\$2,940.00
2	S-BCUSH1842 Cushion for Credenza - 18D x 42W	2	\$1,404.00
3	X-PLAT2D4218 Cbx Full Depth Lat Bf 18dx21hx42w	2	\$5,948.00
4	X-WBFCDL50 Cbx Wardrobe Bf Cd Lh 24dx50hx24w	1	\$3,883.00
5	X-WBFCDR50 Cbx Wardrobe Bf Cd Rh 24dx50hx24w	1	\$3,883.00
6	X-WSROR3060P Cbx Rectangular Ro For 29H Post Leg 30dx60W	1	\$998.00
7	E-MW8W4PJ24 43 in. Electrical Jumper (Pt 24 & Vt32)	1	\$315.00
8	E-MX8W4FDO1 Matrix Black Duplex Outlet - Line 1	1	\$70.00
9	E-MX8W4FDO2 Matrix Black Duplex Outlet - Line 2	1	\$70.00
10	E-MX8W4FDO3 Matrix Black Duplex Outlet - Line 3	1	\$70.00
11	E-MX8W4FDO4 Matrix Black Duplex Outlet - Line 4 - Dedicated	1	\$70.00
12	E-MX8W4PTPC2121 in. Electrical Jumper (Extended Panel To Panel)	1	\$231.00
13	E-MXEK30 Single Powerway Assembly - 30W - 8 wire, 4 circuit	1	\$320.00
14	E-MXEK36 Single Powerway Assembly - 36W - 8 wire, 4 circuit	1	\$341.00
15	E-UN8W4BIFL LH Receptacle Mounted Base Infeed - 72L - 8 Wire, 4 Circuit	1	\$550.00
16	E-UN8W4ICON Universal 8 Wire 4 Cir I Connector	1	\$161.00
17	M-2BT1636 Stack On Frame - 16H x 36W	1	\$365.00
18	M-2TED0830 Dual Electrical Tile - 8H x 30W	2	\$228.00
19	M-2TED0836 Dual Electrical Tile - 8H x 36W	1	\$122.00
20	M-2TTK2430 Tackable Acoustical Tile - 24H x 30W	2	\$224.00
21	M-2TTK3230 Tackable Acoustical Tile - 32H x 30W	2	\$278.00
22	M-2TTK3236 Tackable Acoustical Tile - 32H x 36W	2	\$380.00
23	M-2TTK4036 Tackable Acoustical Tile - 40H x 36W	2	\$446.00
24	M-2TTK4824 Tackable Acoustical Tile - 48H x 24W	2	\$360.00
25	M-2TTK4842 Tackable Acoustical Tile - 48H x 42W	2	\$568.00
26	M-2TTK5636 Tackable Acoustical Tile - 56H x 36W	1	\$297.00
27	M-2TTK6436 Tackable Acoustical Tile - 64H x 36W	3	\$999.00
28	M-ML3C66 3-Way 90 Degree Connector - Linear Trim - 66H	1	\$304.00
29	M-LEC42 Frame End Cap - Linear Trim - 42H	1	\$90.00
30	M-LEC50 Frame End Cap - Linear Trim - 50H	1	\$106.00
31	M-MLFR3436 Panel Frame - Linear Trim - 34H x 36W	1	\$465.00
32	M-MLFR4236 Panel Frame - Linear Trim - 42H x 36W	1	\$493.00
33	M-MLFR5024 Panel Frame - Linear Trim - 50H x 24W	1	\$483.00
34	M-MLFR5042 Panel Frame - Linear Trim - 50H x 42W	1	\$540.00
35	M-MLFR6630 Panel Frame - Linear Trim - 66H x 30W	1	\$554.00
36	M-MLFR6636 Panel Frame - Linear Trim - 66H x 36W	2	\$1,150.00
37	M-MLGPEP5060 MTX Gallery Panel EOR DBL 50H x 60W Horiz	1	\$1,070.00
38	M-MLHILOSK16 Straight HiLo - Linear Trim - 16H	2	\$212.00
39	M-MLHILOSK24 Straight HiLo - Linear Trim - 24H	1	\$122.00
40	M-MLTGB1636 Back Glass Tile - Linear Trim - 16H x 36W	1	\$212.00
41	M-MLTGF1636 Front Glass Tile - Linear Trim - 16H x 36W	1	\$334.00
42	M-UNCT30L Regular Cantilever - Left Hand - 30D	2	\$378.00
43	M-UNCT30R Regular Cantilever - Right Hand - 30D	2	\$378.00
44	X-CBC283018 Cbx Full Depth Floor Bookcase 18dx28hx30w	2	\$3,172.00
45	A-LEDTL-61024 24 Led Task Light, W/ Dimmer & Transformer	2	\$1,062.00
46	F-FDUMX30L Type C Flipper Unit - Laminate Face - 30W	2	\$1,942.00
47	W-WS3072 Rectangular - 2mm Edge - 30D x 72W	2	\$2,062.00
48	W-FS-AL22730 A-Leg - 2.5 x 2.5 Post - 27H - 30 Depth	2	\$1,552.00

Total List \$42,202.00

Pricing shown is for budgetary purposes only and subject to change. Pricelist Dates: 4/1/24. Contact your local Rep for a quote.

Availability of finishes and materials shown may vary due to manufacturers' lifecycle management.

More Idea Starters available at <https://www.ais-inc.com/resources/idea-starters>