

# UPHOLSTERY FABRIC OPTIONS

Seating & Cushions  
Berry Amendment  
Compliant Offering

Grade D

# Mayer Grade D Upholstery Options | Continuum 10



Continuum 10  
Igloo 422-037



Continuum 10  
Cafe Au Lait 422-007



Continuum 10  
Stone 422-027



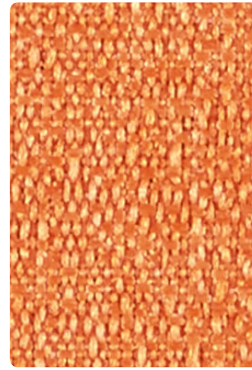
Continuum 10  
Saffron 422-002



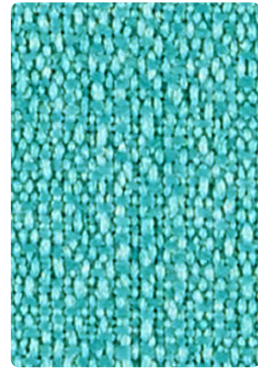
Continuum 10  
Almond 422-017



Continuum 10  
Dove 422-026



Continuum 10  
Mandarin 422-009



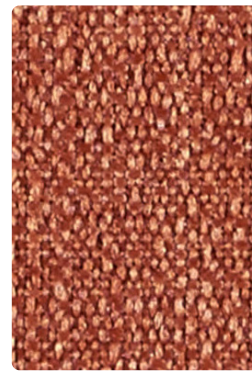
Continuum 10  
Turquoise 422-034



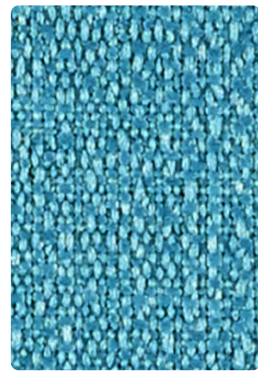
Continuum 10  
Citrine 422-023



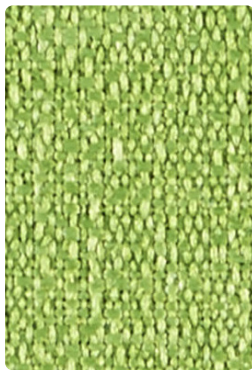
Continuum 10  
Iron 422-036



Continuum 10  
Brick 422-019



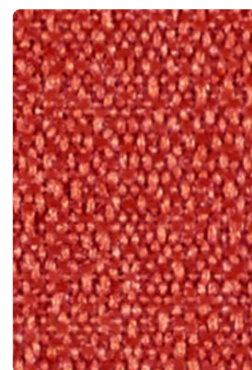
Continuum 10  
Ocean 422-044



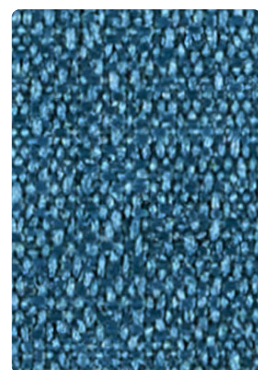
Continuum 10  
Spring 422-003



Continuum 10  
Charcoal 422-016

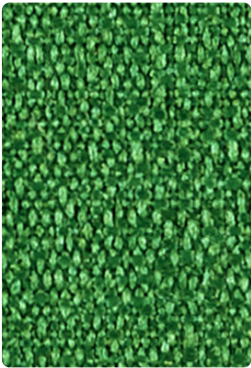


Continuum 10  
Lipstick 422-001



Continuum 10  
Caribbean 422-024

# Mayer Grade D Upholstery Options | Continuum 10



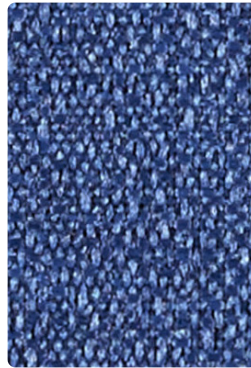
Continuum 10  
Emerald 422-013



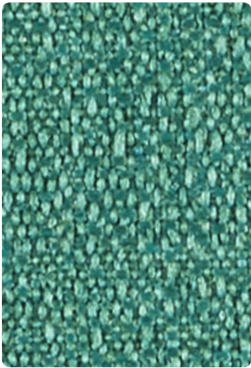
Continuum 10  
Onyx 422-006



Continuum 10  
Beet 422-008



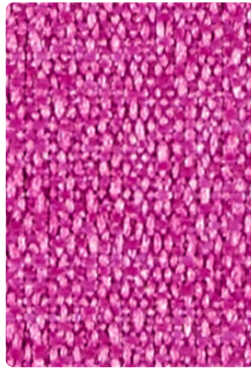
Continuum 10  
Indigo 422-004



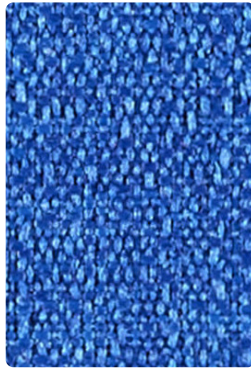
Continuum 10  
Pine 422-033



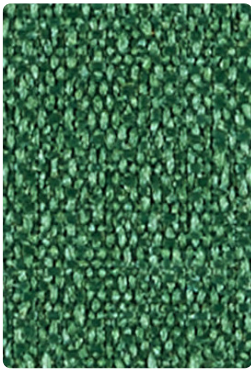
Continuum 10  
Espresso 422-000



Continuum 10  
Magenta 422-005



Continuum 10  
Electric 422-014



Continuum 10  
Bottle 422-043

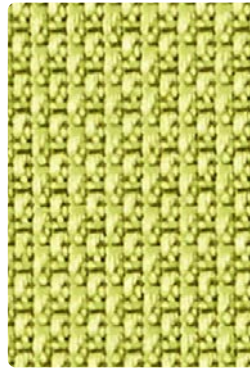
# Mayer Grade D Upholstery Options | Optic 10



Optic 10  
Fieldstone 424-017



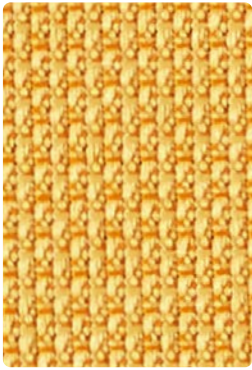
Optic 10  
Mushroom 424-007



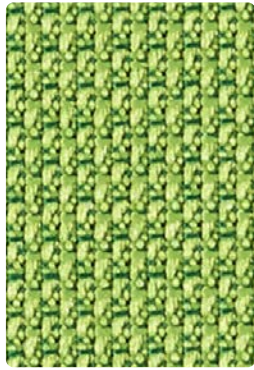
Optic 10  
Green Apple 424-013



Optic 10  
Elephant 424-026



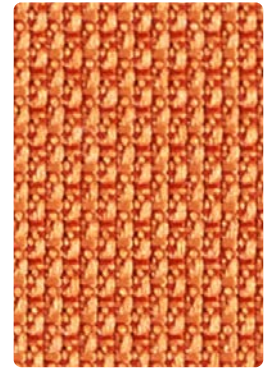
Optic 10  
Tangerine 424-019



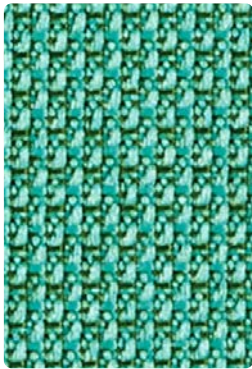
Optic 10  
Springtime 424-023



Optic 10  
Coal 424-016



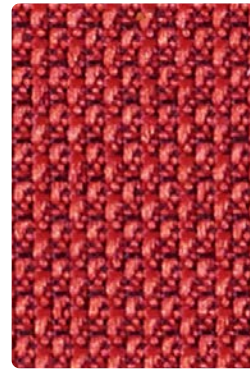
Optic 10  
Sunrise 424-009



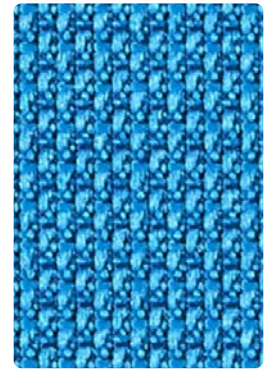
Optic 10  
Myrtle 424-033



Optic 10  
Ash 424-006



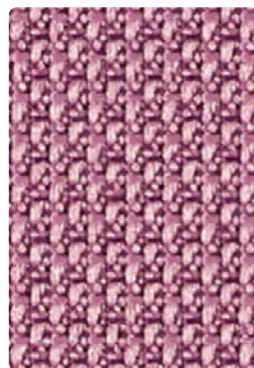
Optic 10  
Red 424-001



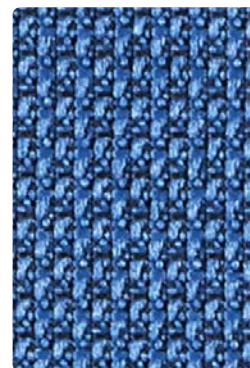
Optic 10  
Ocean 424-024



Optic 10  
Brown Bear 424-000



Optic 10  
Mulberry 424-005



Optic 10  
Yale 424-004

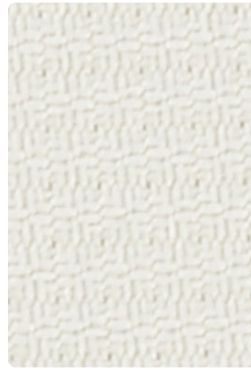
# Mayer Grade D Upholstery Options | Prism 10



Prism 10  
Zinc 426-027



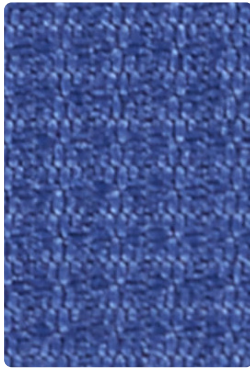
Prism 10  
Cafe Au Lait 426-007



Prism 10  
Alabaster 426-037



Prism 10  
Espresso 426-000



Prism 10  
Indigo 426-004



Prism 10  
Stone 426-017



Prism 10  
Topaz 426-002



Prism 10  
Cornflower 426-014



Prism 10  
Cerulean 426-034



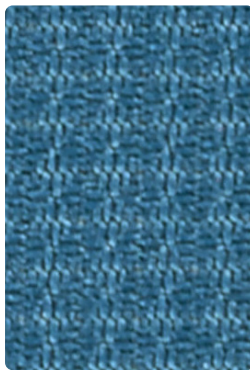
Prism 10  
Mocha 426-010



Prism 10  
Caramel 426-012



Prism 10  
Plum 426-005



Prism 10  
Caribbean 426-024



Prism 10  
Dove 426-026



Prism 10  
Clay 426-019



Prism 10  
Raisin 426-008

# Mayer Grade D Upholstery Options | Prism 10



Prism 10  
Olive 426-013



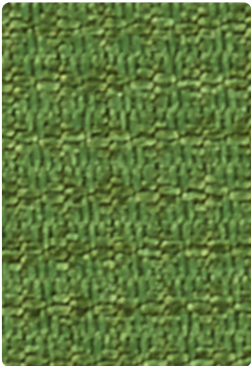
Prism 10  
Charcoal 426-016



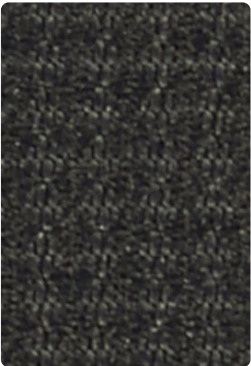
Prism 10  
Clementine 426-009



Prism 10  
Claret 426-011



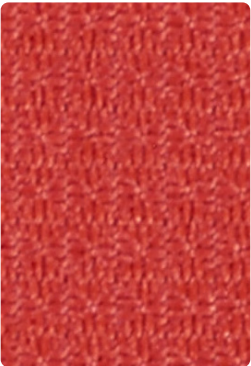
Prism 10  
Kale 426-003



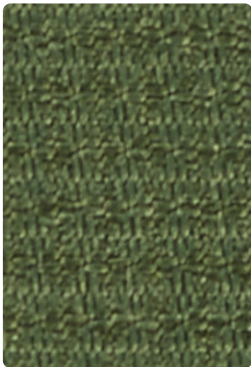
Prism 10  
Onyx 426-006



Prism 10  
Tomato 426-021



Prism 10  
Lipstick 426-001



Prism 10  
Asparagus 426-023

# Mayer Grade D Upholstery Options | Theory 10



Theory 10  
Alabaster 423-037



Theory 10  
Cafe Au Lait 423-007



Theory 10  
Zinc 423-027



Theory 10  
Banana 423-002



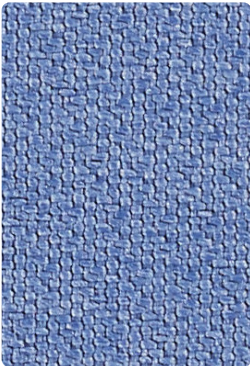
Theory 10  
Dove 423-026



Theory 10  
Stone 423-017



Theory 10  
Tobacco 423-019



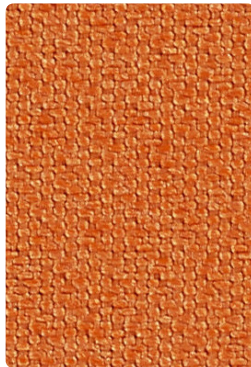
Theory 10  
Slate 423-024



Theory 10  
Teal 423-044



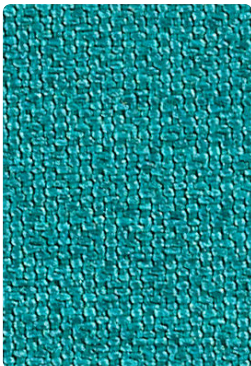
Theory 10  
Mocha 423-010



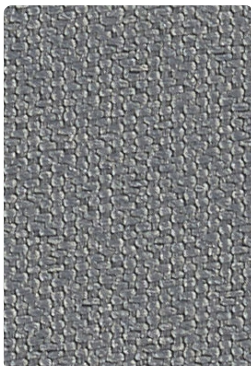
Theory 10  
Mango 423-009



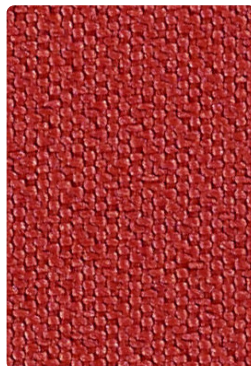
Theory 10  
Indigo 423-014



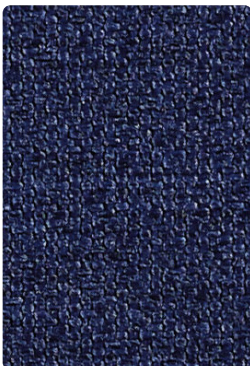
Theory 10  
Peacock 423-034



Theory 10  
Charcoal 423-016

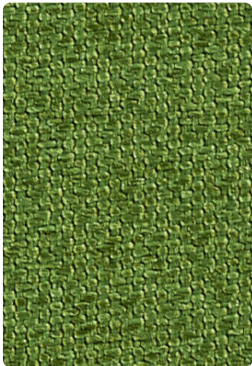


Theory 10  
Lipstick 423-001



Theory 10  
Navy 423-004

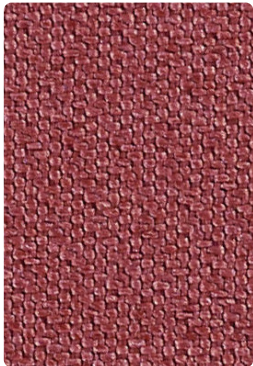
# Mayer Grade D Upholstery Options | Theory 10



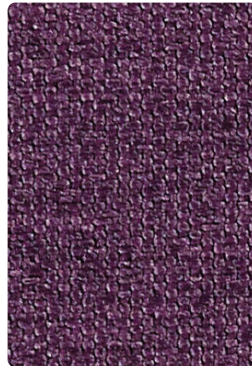
Theory 10  
Grass 423-003



Theory 10  
Onyx 423-005



Theory 10  
Rouge 423-011



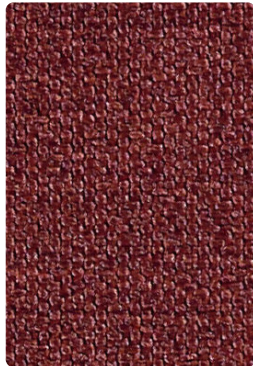
Theory 10  
Aubergine 423-005



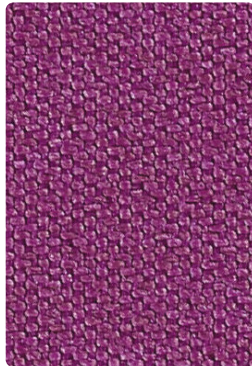
Theory 10  
Grove 423-023



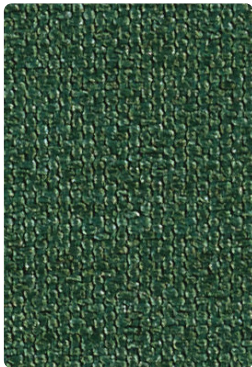
Theory 10  
Espresso 423-000



Theory 10  
Port 423-008



Theory 10  
Raspberry 423-015



Theory 10  
Evergreen 423-013

# AIS Upholstery Technical Information

Manufacturer	Pattern	AIS Grade	Width	Fiber Content	Lightfastness	Flammability	Repeat	Backing	Abrasion
Mayer	Continuum 10	D	54"	100% Post Consumer Recycled Polyester	40 Hours, Class 4.0	Pass	.05"H, .59"V	Latex	130,000 Double Rubs
Mayer	Optic 10	D	54"	83% Post Consumer Recycled Polyester/ 17% Polyester	40 Hours, Class 4.0	Pass	.33"H, .02"V	Latex	185,000 Double Rubs
Mayer	Prism 10	D	54"	75% Post -Consumer Recycled Polyester/ 25% Polyester	40 Hours, Class 4.0	Pass	.17"L, .20"W	Latex	105,000 Double Rubs
Mayer	Theory 10	D	54"	75% Post Consumer Recycled Polyester/ 25% Polyester	40 Hours, Class 4.0	Pass	.17"H, .39"V	Latex	150,000 Double Rubs

Place of Manufacture:

Mayer Greensboro, NC

Cleaning Code: WS



To view samples online, visit [www.ais-inc.com/finishcenter](http://www.ais-inc.com/finishcenter)

800.434.7400 | 978.562.7500 | [www.ais-inc.com](http://www.ais-inc.com) | PANELBERRY | 03/2023