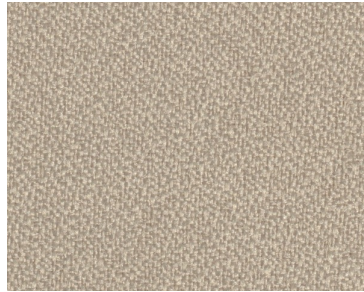


Anchorage

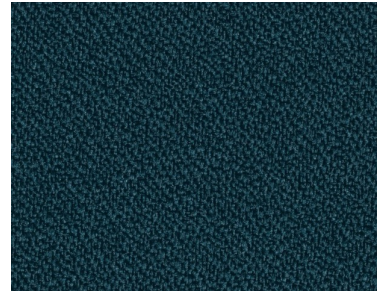
Grade A Upholstery



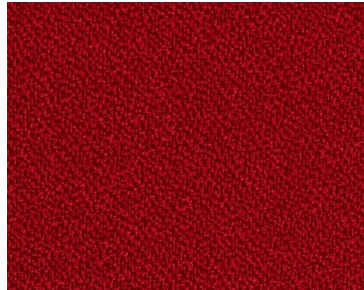
Asteroid



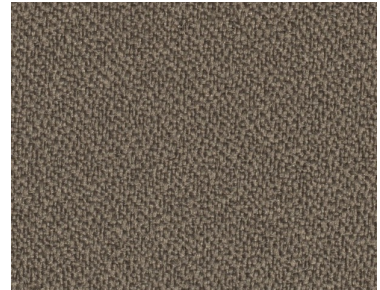
Birch



Deep Water



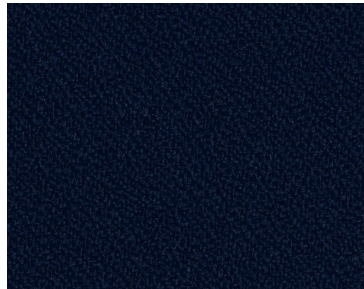
Geranium



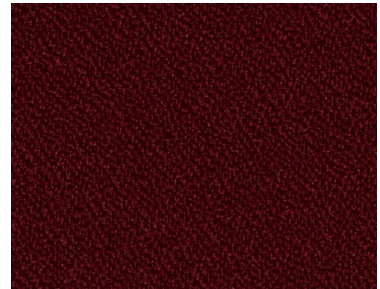
Goose



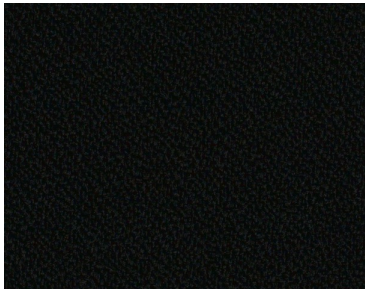
Green Apple



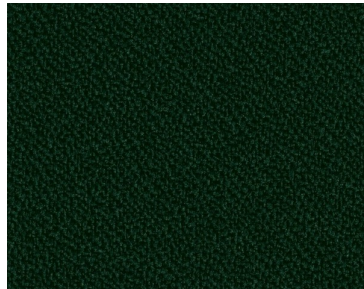
Midnight



Mulberry



Onyx



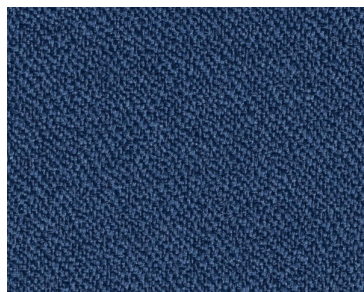
Pine Needle



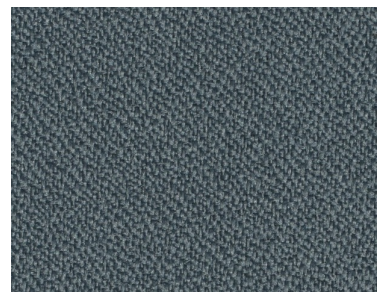
Quarry Blue



Shadow



Thistle



Wolf

Technical Information

AIS

Pattern: Anchorage

Grade: A

| | |
|---|---|
| Characteristics: Content 100% Post-Consumer Recycled Polyester Backing None Finish None Width 66" Weight 15 oz Repeat None Directional Directional | Testing: Abrasion 250,000 Double Rubs Flammability Pass Lightfastness Class 4/40 hrs. min. |
| Certifications: LEED | Sustainability Recycled Content |
| Cleaning Code WS | Application Panel/Acoustic |

Cleaning And Care Information

S: Solvent **W:** Water-Based Cleaner **WS:** Water/Solvent Cleaner **IC:** Inherently Cleanable

BC: Bleach Cleanable - Bleach Cleanable – 1 part bleach, 9 parts water = 10% bleach, 90% water solution. Do not clean/disinfect fabric for longer than 10 minutes using the 10% bleach solution. Always rinse promptly with clean water after applying the bleach solution. Failure to do so will void any and all warranties.

Dye Transfer Disclaimer

Certain clothing and accessory dyes (such as those used on denim jeans) may migrate to lighter colors. This phenomenon is increased by humidity and temperature and is irreversible. AIS will not assume responsibility for dye transfer caused by external contaminants. Please check compatibility when using this product in combination with painted or varnished surfaces.

Additional Information