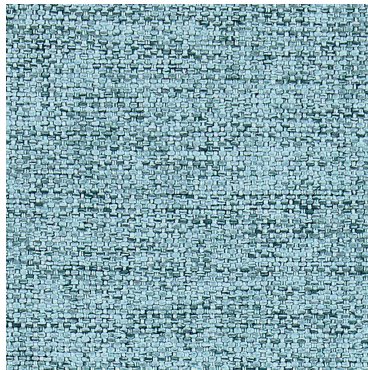
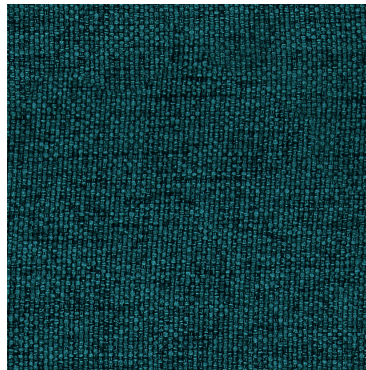


Beso

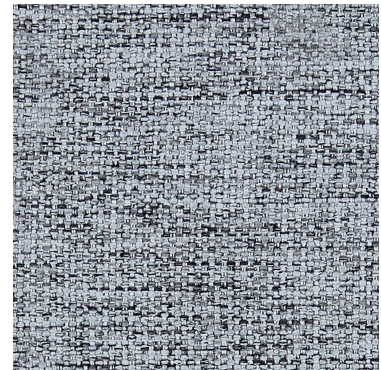
Grade A Upholstery



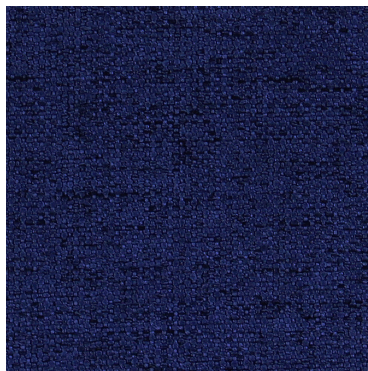
Aqua



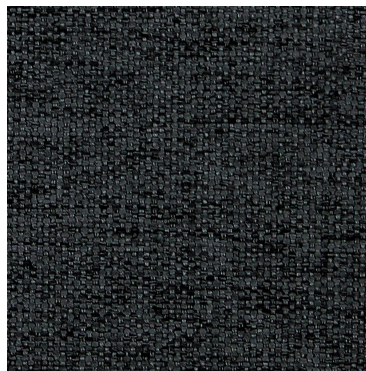
Capri



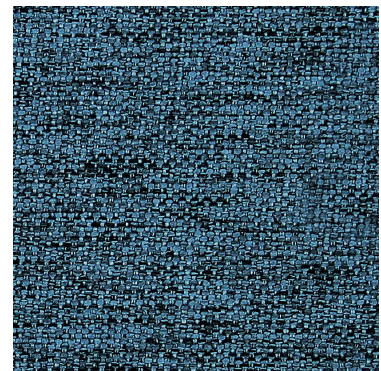
Chalice



Dusk



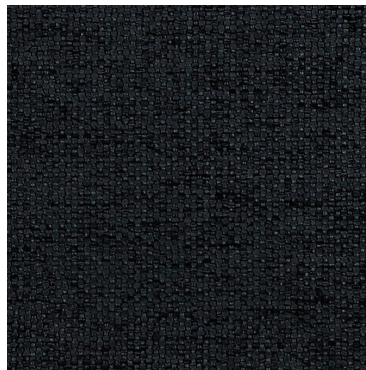
Graphite



Harbor



Jute



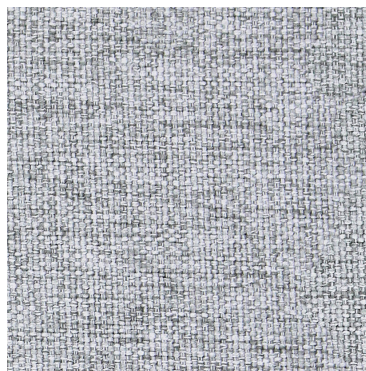
Onyx



Peridot



Scarlet



Silver



Stone

Technical Information

AIS

Pattern: Beso

Grade: A

| | |
|--|---|
| Characteristics: Content 100% Polyester Backing 100% Polyester Finish i-Clean® Width 54" Weight 14 oz Repeat None Directional Non-Directional | Testing: Abrasion 100,000 Double Rubs Flammability Pass Lightfastness Class 4/40 hrs. min. |
| Certifications: N/A | Sustainability N/A |
| Cleaning Code W | Application Upholstery |

Cleaning And Care Information

S: Solvent **W:** Water-Based Cleaner **WS:** Water/Solvent Cleaner **IC:** Inherently Cleanable

BC: Bleach Cleanable - Bleach Cleanable – 1 part bleach, 9 parts water = 10% bleach, 90% water solution. Do not clean/disinfect fabric for longer than 10 minutes using the 10% bleach solution. Always rinse promptly with clean water after applying the bleach solution. Failure to do so will void any and all warranties.

Dye Transfer Disclaimer

Certain clothing and accessory dyes (such as those used on denim jeans) may migrate to lighter colors. This phenomenon is increased by humidity and temperature and is irreversible. AIS will not assume responsibility for dye transfer caused by external contaminants. Please check compatibility when using this product in combination with painted or varnished surfaces.

Additional Information

i-Clean® fabrics are high-performance textiles designed for comfort, durability, and easy maintenance. Nano-based technology repels moisture and stains, allowing spills to bead up for quick, effortless cleanup.