



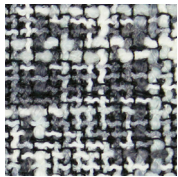


# Quietly Commanding

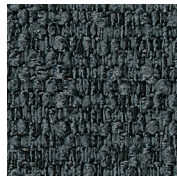
A study in quiet confidence, this palette layers deep charcoals, softened grays, mineral tones, and warm wood finishes to create a calm, grounded workplace atmosphere. Rich textures and matte surfaces add depth and warmth, shaping executive, lounge, and collaborative spaces that feel composed, elevated, and intentionally curated for focus, comfort, and connection.

## Finishes

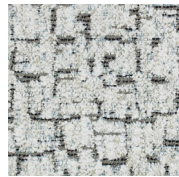
### UPHOLSTERY



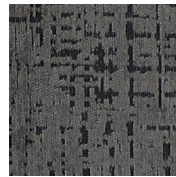
Haute - Caviar



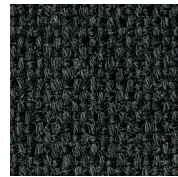
Jules - Slate



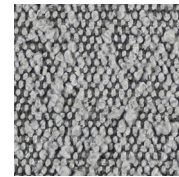
Haptic - Vapor



Kai - Mercury

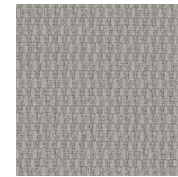


Pike - Jet



Chap - Smoke

### VERTICAL



Expanse - Steel

### LAMINATE



Brazilwood



Landmark



Gridlock in L.A.



Strand - Wheat



Strand - Burnt



Verde Comodoro

### PAINT



Dark Tone

### PET



Warm Grey

### CORIAN



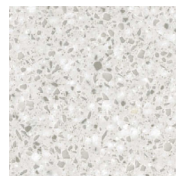
Silver Gray



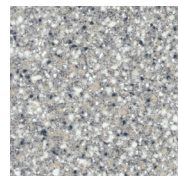
Concrete



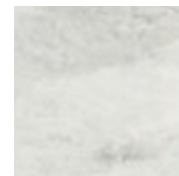
Lava Rock



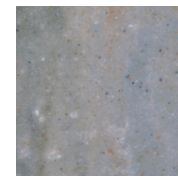
Silver Birch



Platinum



Carraro Lino



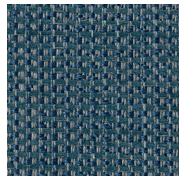
Juniper

# Natural Balance

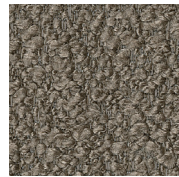
A calming blend of natural textures and softened neutrals, this workplace palette layers sage, moss, mineral blue, warm taupe, charcoal, and wood tones to create interiors that feel grounded, restorative, and human-centered. Rich woven fabrics, matte laminates, textured poly shells, and earthy finishes bring warmth, depth, and sophistication to collaborative, lounge, and executive spaces.

## Finishes

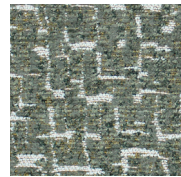
### UPHOLSTERY



Picea - Cobalt



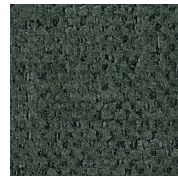
Boxer - Driftwood



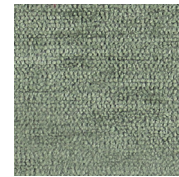
Haptic - Kale



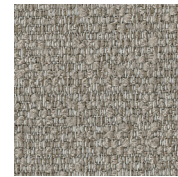
Equis - Saddle



Vidi - Jade



Luxique - Aloe



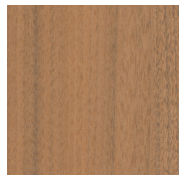
Jules - Biscuit



Chase - Mushroom

### VERTICAL

### LAMINATE



Brazilwood



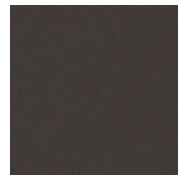
Landmark



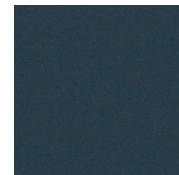
Aimtoo Savatre



Verde Comodoro



Grigio Aragona



Blu Shaba



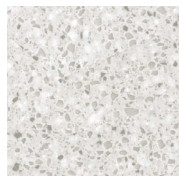
Warm Grey

### PET

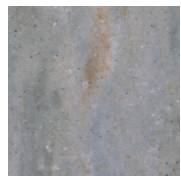
### CORIAN



Linen



Silver Birch

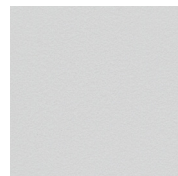


Juniper

### POLYPROPYLENE



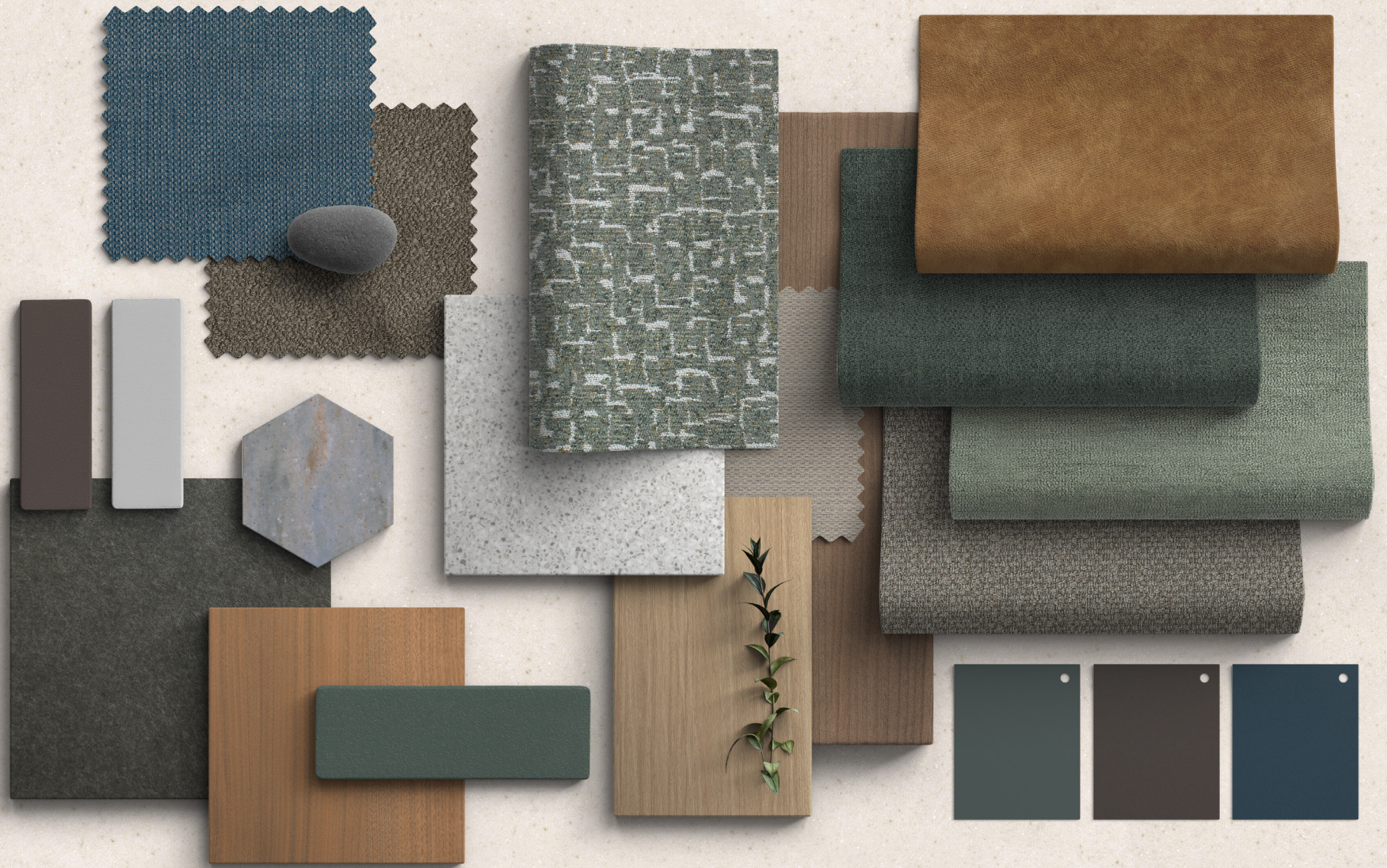
Brownstone



White



Basil Texture





# Moody Modernism

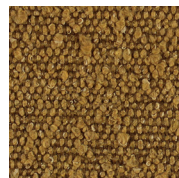
A rich blend of retro influence and modern hospitality warmth, this palette layers deep muted blues, olive greens, warm rusts, camel, and smoky charcoals with natural wood laminates, tactile upholstery fabrics, and earthy material tones. Textured weaves, softened geometrics, and matte finishes create spaces that feel intimate, expressive, and comfortably refined — designed for lounges, cafés, boutique hospitality settings, executive spaces, and more.

## Finishes

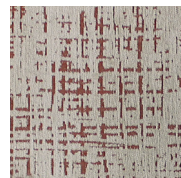
### UPHOLSTERY



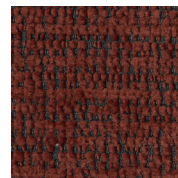
Vigor - Fossil



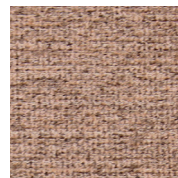
Chap - Ochre



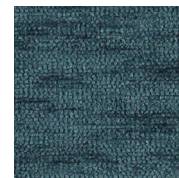
Kai - Gypsum



Billy - Garnet



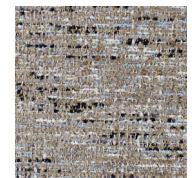
Bravia - Sienna



Luxique - Cyprine

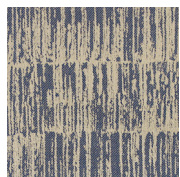


Luxique - Adobe



Kudos - Latte

### UPHOLSTERY



Inlay - Alchemy



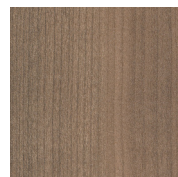
Vidi - Twilight



Equis - Tanner



Field Elm



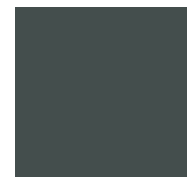
Aimtoo Savatre



Trytoo Savatre



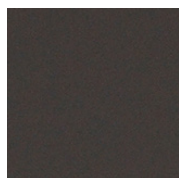
Corporate Walnut



Verde Comodoro

### LAMINATE

### LAMINATE



Grigio Aragona

### CORIAN



Lava Rock

### PET



Olive Green

### POLYPROPYLENE



Charcoal Gray

### PAINT



Light Tone



Champagne Metallic



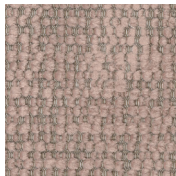
Antique Gold

# Midnight Luxe

Deep jewel-toned fabrics, dark wood laminates, and layered textures come together to create a boutique hospitality palette that feels sultry, intimate, and elevated. Saturated blues and garnet tones are balanced with smoked woods, matte finishes, textured upholstery, stone-inspired surfaces, and warm metallic accents for a material story that feels dramatic yet polished.

## Finishes

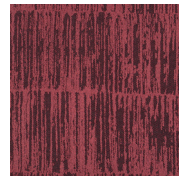
### UPHOLSTERY



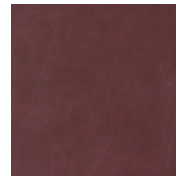
Billy - Dusk



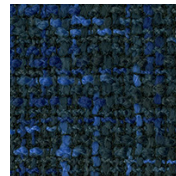
Dwell - Rumba



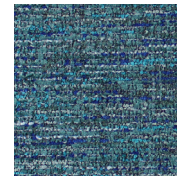
Inlay - Ruby



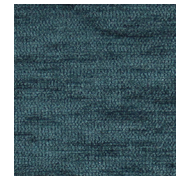
Equis - Shiraz



Haute - Black Sea



Kudos - Teal



Luxique - Cyprine



Boxer - Haze

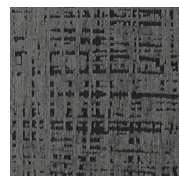
### UPHOLSTERY



Dwell - Caldera



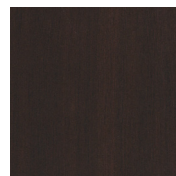
Chap - Obsidian



Kai - Mercury



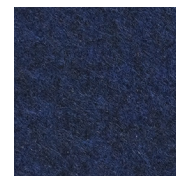
Twill - Graphite



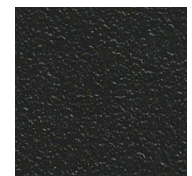
Nightfall



Madagascar



Navy



Black Texture

### LAMINATE

### PET

### POLYPROPYLENE

### CORIAN

### PAINT



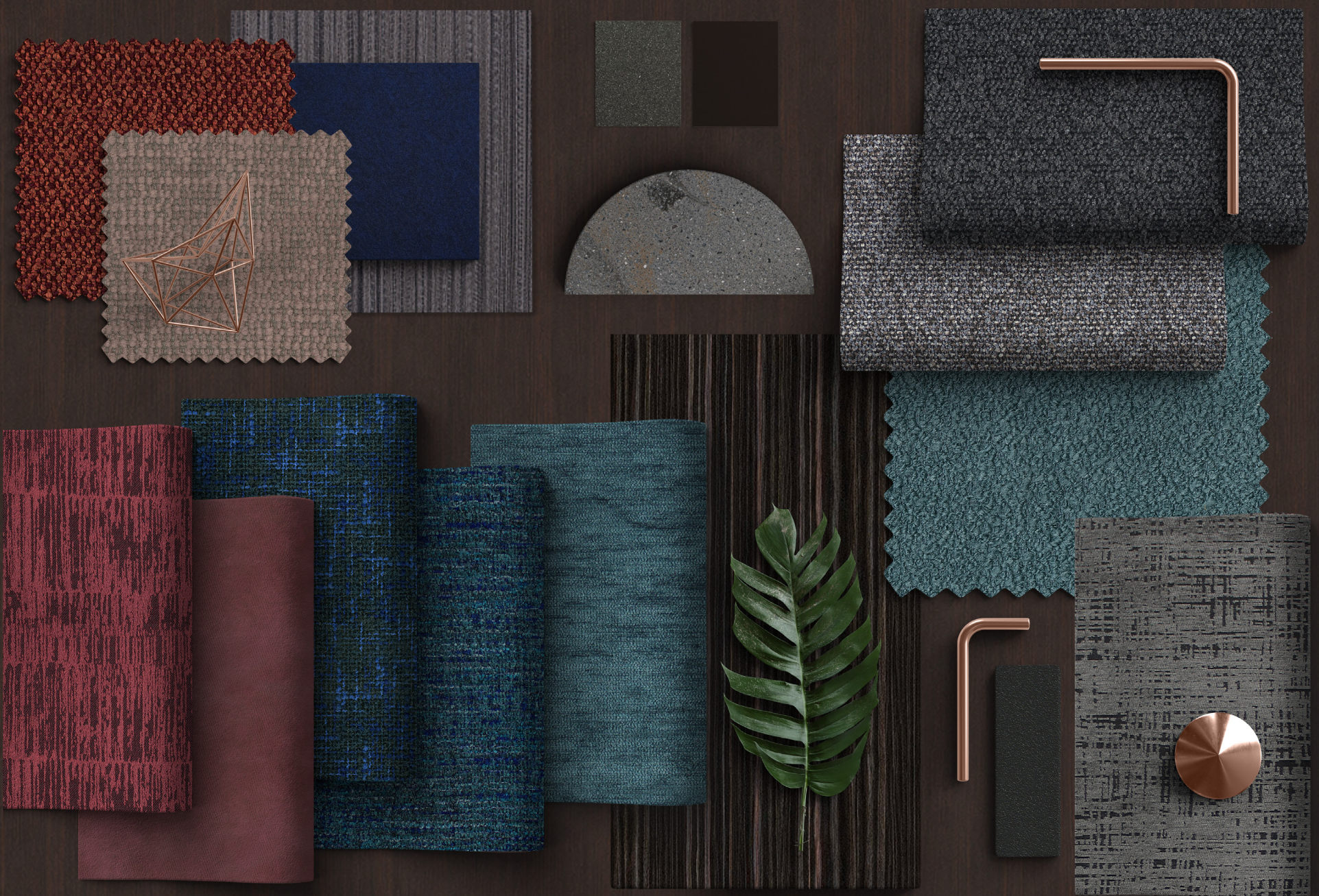
Lava Rock



Dark Grey Metallic



Black



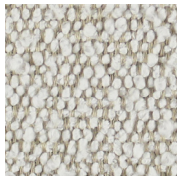


# Soft Renewal

Light, airy, and restorative, this wellness-inspired palette blends soft aquas, warm sands, creamy whites, and misted neutrals with tactile fabrics, subtle textures, and light wood laminates. Glass, paint, poly, and Corian finishes add a clean, calming balance. Designed for healthcare, wellness, spa-inspired settings, the overall mood feels serene, sensual, and refreshing — creating spaces that support comfort, ease, and a soothing sense of escape.

## Finishes

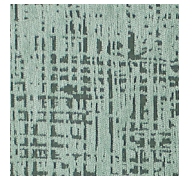
### UPHOLSTERY



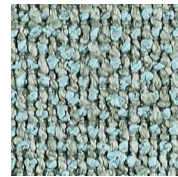
Chap - Quartz



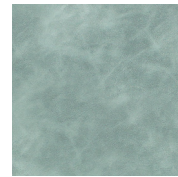
Inlay - Gilded



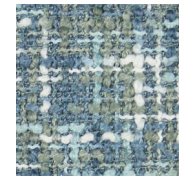
Kai - Celadon



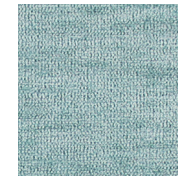
Dwell - Seaglass



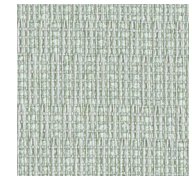
Equis - Mint



Haute - Foggy



Luxique - Aqua



Sprite - Powder

### VERTICAL

### LAMINATES



Phantom Pearl



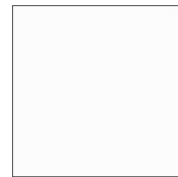
White Chocolate



Leave Likatre



Phantom Ecu



Bianco Kos

### PAINT

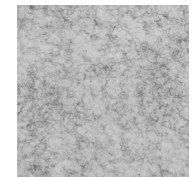


Chalk



Light Tone

### PET

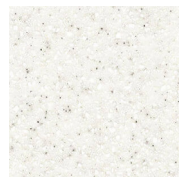


Light Grey

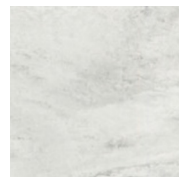
### CORIAN



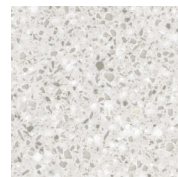
White Onyx



Everest



Carraro Lino

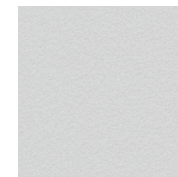


Silver Birch

### POLYPROPYLENE

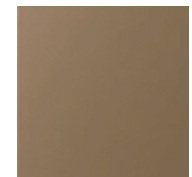


Surf



White

### GLASS



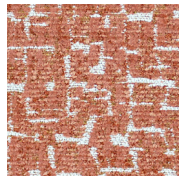
Bronze

# Ember Lounge

Rich burgundy, warm spice tones, smoky charcoals, and dark wood laminates come together to create environments that feel intimate, elevated, and inviting. Layered upholstery fabrics, textured weaves, refined patterns, and warm metallic accents add depth and character. Ideal for executive lounges, boutique hospitality settings, Ember Lounge creates a warm, memorable atmosphere where comfort, conversation, and quiet luxury naturally coexist.

## Finishes

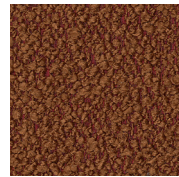
### UPHOLSTERY



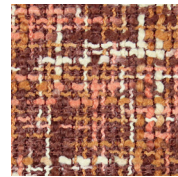
Haptic - Coral



Kudos - Salsa



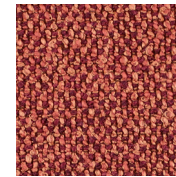
Boxer - Ember



Haute - Autumn



Vidi - Goldenrod



Dwell - Rumba

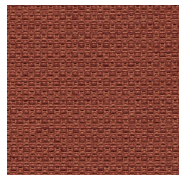


Equis - Shiraz

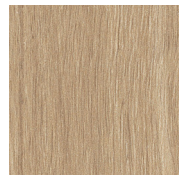


Vigor - Fossil

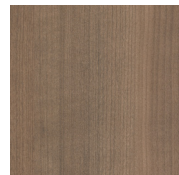
### VERTICAL



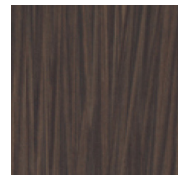
Chase - Red Clay



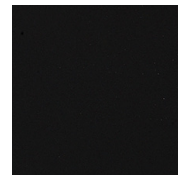
Landmark



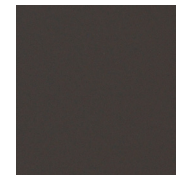
Aimtoo Savatre



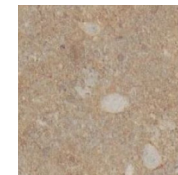
Strand - Wenge



Nero Ingo



Grigio Aragona



Gridlock in L.A.



Warm Grey

### LAMINATE

### PET

### CORIAN

### PAINT

### POLYPROPYLENE

### GLASS



White Onyx



Burnt Orange



Brown



Ruby Red



Black



Brownstone



Bronze



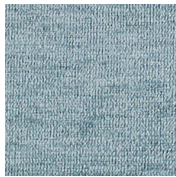


# Calm Confidence

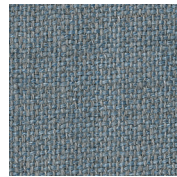
Rich blues, cool grays, and light natural wood tones come together to create a workplace palette that feels composed, professional, and thoughtful. Textured upholstery fabrics, subtle patterns, stone-inspired surfaces, glass accents, and soft neutral finishes add depth and visual interest while maintaining a calm, focused atmosphere. Ideal for executive offices, conference rooms, and client-facing spaces where confidence and comfort work hand in hand.

## Finishes

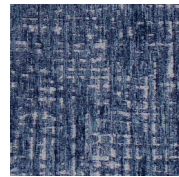
### UPHOLSTERY



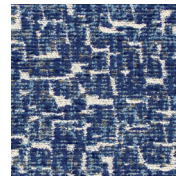
Luxique - Skylight



Pike - Drift



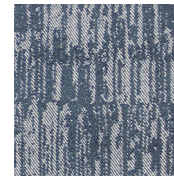
Kai - Lazuli



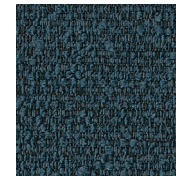
Haptic - Fathom



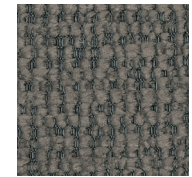
Dwell - Dusk



Inlay - Shale



Jules - Harbor

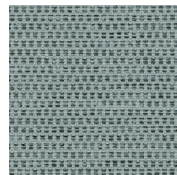


Billy - Graphite

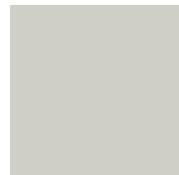
### VERTICAL



Expanse - Sand



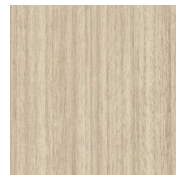
Ease - Feather



Summer Drops



Looks Likatre



Maritime Dune



Trytoo Savatre

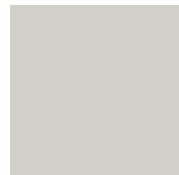


Blu Shaba



Light Grey

### LAMINATE



Summer Drops



Looks Likatre



Maritime Dune



Trytoo Savatre



Blu Shaba



Light Grey

### PET

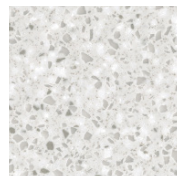


Light Grey

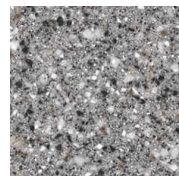
### CORIAN



Dove



Silver Birch

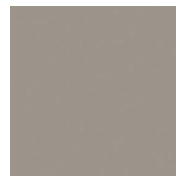


Platinum

### PAINT



Tan Value 1

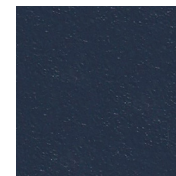


Innertone



Flint Grey Metallic

### POLYPROPYLENE



Indigo Texture

### GLASS



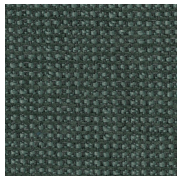
Frosted

# Emerald Reserve

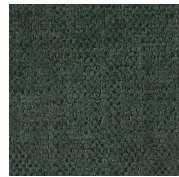
Layers of rich emerald tones, warm woods, tactile fabrics, and soft metallic accents create spaces that feel welcoming, comfortable, and full of character. Plush textures and natural finishes bring depth and warmth, while the saturated green tone adds a sense of warmth. Ideal for executive suites, hospitality lounges, workplace cafés, and collaborative settings, this palette creates a relaxed retreat for conversation, and everyday moments.

## Finishes

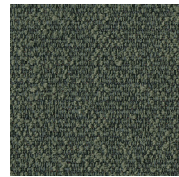
### UPHOLSTERY



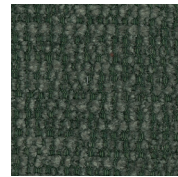
Picea - Verdant



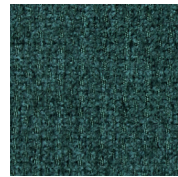
Vidi - Jade



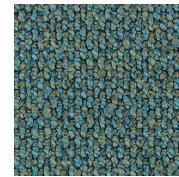
Jules - Pine



Billy - Emerald



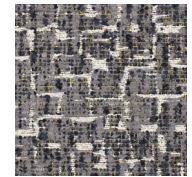
Bravia - Emerald



Dwell - Forest

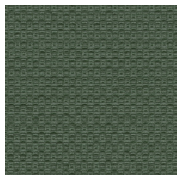


Equis - Spruce

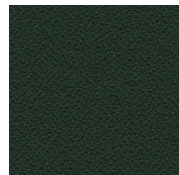


Haptic - Carbon

### VERTICAL



Chase - Moss



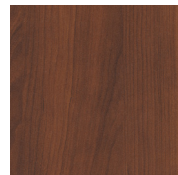
Anchorage - Pine Needle



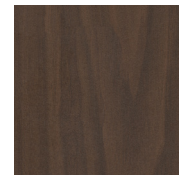
Neo Walnut



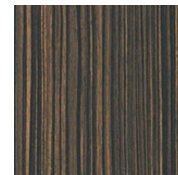
Aimtoo Savatre



Dark Rum Cherry



Corporate Walnut



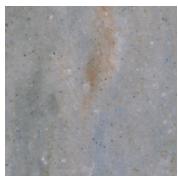
Ebony



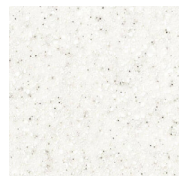
Verde Comodoro

### LAMINATE

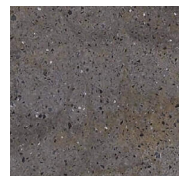
### CORIAN



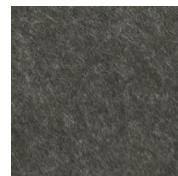
Juniper



Everest



Lava Rock



Warm Grey

### PET



Antique Gold

### PAINT

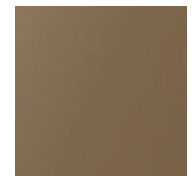


Brown



Dark Tone

### GLASS



Bronze





AIS