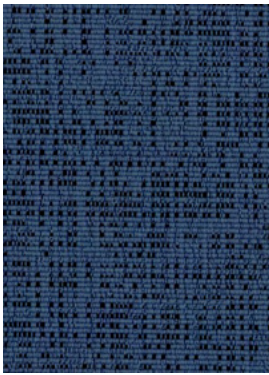


Marin

Grade B Vertical



Benthic



Black Tip



Carrageen



Clownfish



Dolphin



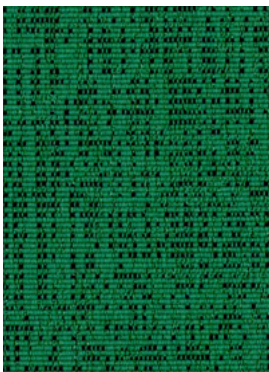
Grey Whale



Ice Edge



Intertidal



Mangrove



Pelican



Red Snapper



Sand



Sea Glass



Sunfish



Swell



Tusk

Technical Information

AIS

Pattern: Marin

Grade: B

Characteristics: Content 90% Post-Consumer Recycled Polyester Including Ocean Waste; 10% Polyester Backing None Finish None Width 67" Weight 12.5 oz Repeat 12.7"H 19.1"V Directional Directional	Testing: Flammability ASTM E84 Class I or A Lightfastness Class 4/40 hrs. min.
Certifications: UL Approved LEED	Sustainability SEAQUAL™ Ocean Waste Clean impact Textiles™; Recycled Content; PFAS-free; PVC-Free; Antimicrobial-Free
Cleaning Code WS	Application Vertical Surface

Cleaning And Care Information

S: Solvent **W:** Water-Based Cleaner **WS:** Water/Solvent Cleaner **IC:** Inherently Cleanable

BC: Bleach Cleanable - Bleach Cleanable – 1 part bleach, 9 parts water = 10% bleach, 90% water solution. Do not clean/disinfect fabric for longer than 10 minutes using the 10% bleach solution. Always rinse promptly with clean water after applying the bleach solution. Failure to do so will void any and all warranties.

Dye Transfer Disclaimer

Certain clothing and accessory dyes (such as those used on denim jeans) may migrate to lighter colors. This phenomenon is increased by humidity and temperature and is irreversible. AIS will not assume responsibility for dye transfer caused by external contaminants. Please check compatibility when using this product in combination with painted or varnished surfaces.

Additional Information

CLEAN IMPACT TEXTILES™ fabrics are made from repurposed throwaway materials and combine innovative technologies that minimize their environmental impact at the end of their useful life.

MARINFC