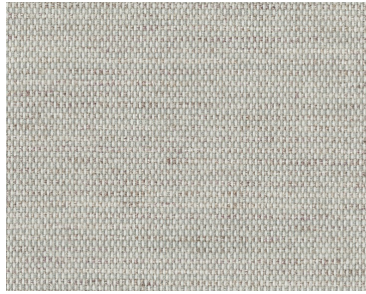
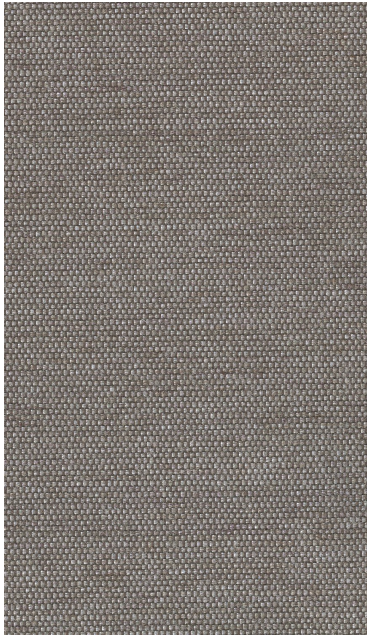
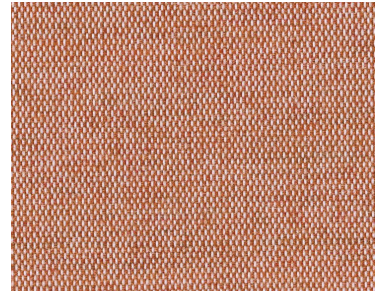


# Nature

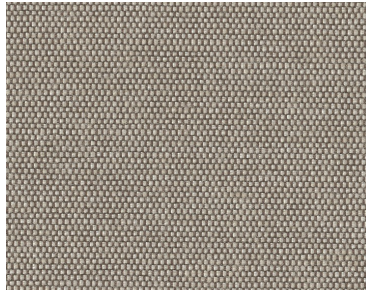
Grade B Vertical



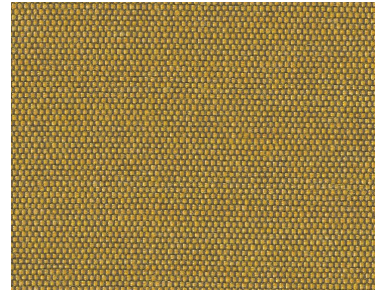
Cot



Campfire

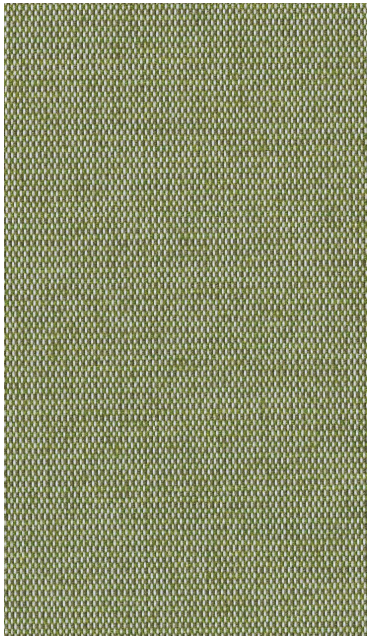


Dock

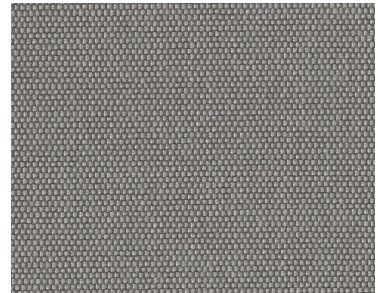


Firefly

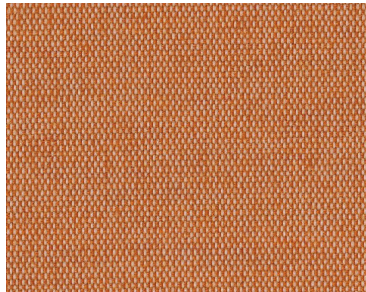
Canoe



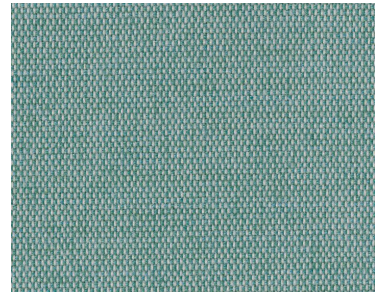
Granola



Grill

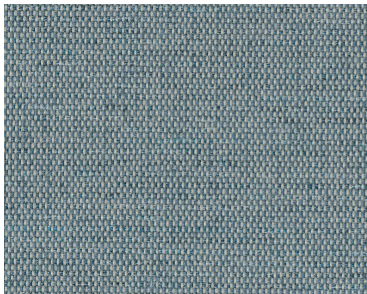


Jamboree

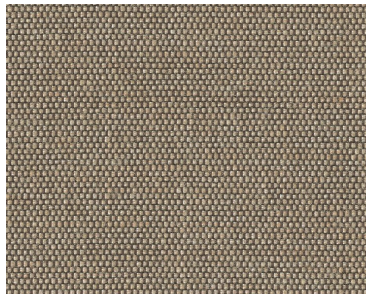


Pond

Forest



Rain



Scout



Tent

# Technical Information

# AIS

**Pattern:** Nature

**Grade:** B

<b>Characteristics:</b>  <b>Content</b> 100% Post-Consumer Recycled Polyester  <b>Backing</b> None <b>Finish</b> None <b>Width</b> 66" <b>Weight</b> 15.5 oz <b>Repeat</b> None <b>Directional</b> Directional	<b>Testing:</b>  <b>Flammability</b> ASTM E84 Class I or A <b>Lightfastness</b> Class 4/40 hrs. min.
<b>Certifications:</b>  UL Approved	<b>Sustainability</b>  N/A
<b>Cleaning Code</b>  WS	<b>Application</b>  Vertical Surface

## Cleaning And Care Information

**S:** Solvent      **W:** Water-Based Cleaner      **WS:** Water/Solvent Cleaner      **IC:** Inherently Cleanable

**BC:** Bleach Cleanable - Bleach Cleanable – 1 part bleach, 9 parts water = 10% bleach, 90% water solution. Do not clean/disinfect fabric for longer than 10 minutes using the 10% bleach solution. Always rinse promptly with clean water after applying the bleach solution. Failure to do so will void any and all warranties.

## Dye Transfer Disclaimer

Certain clothing and accessory dyes (such as those used on denim jeans) may migrate to lighter colors. This phenomenon is increased by humidity and temperature and is irreversible. AIS will not assume responsibility for dye transfer caused by external contaminants. Please check compatibility when using this product in combination with painted or varnished surfaces.

## Additional Information

NATUREFC