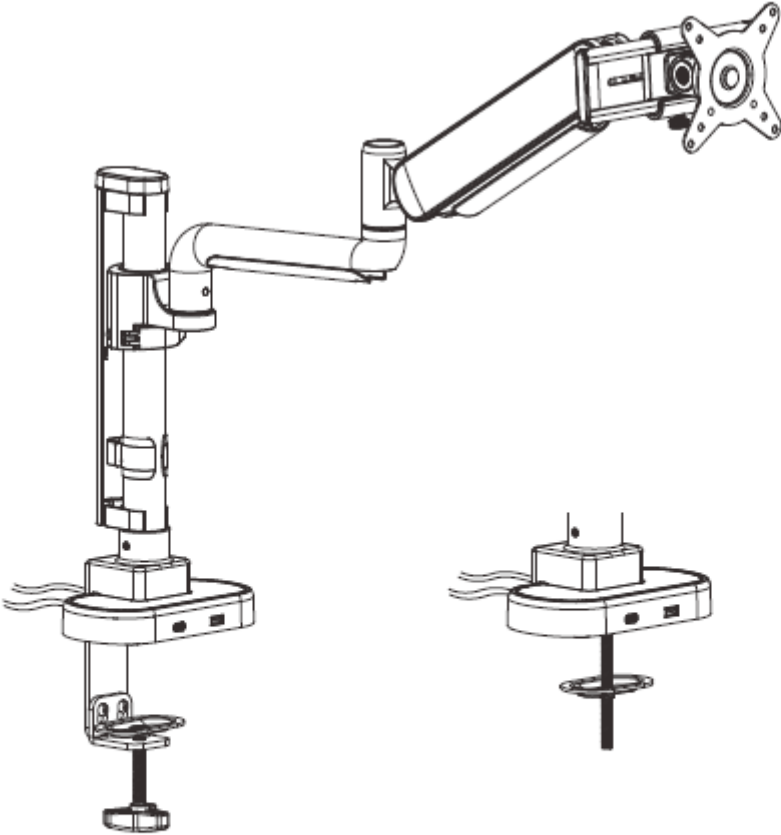


Performance Series Single Monitor Arm Installation Instructions

With Slider and USB-A / USB-C Ports

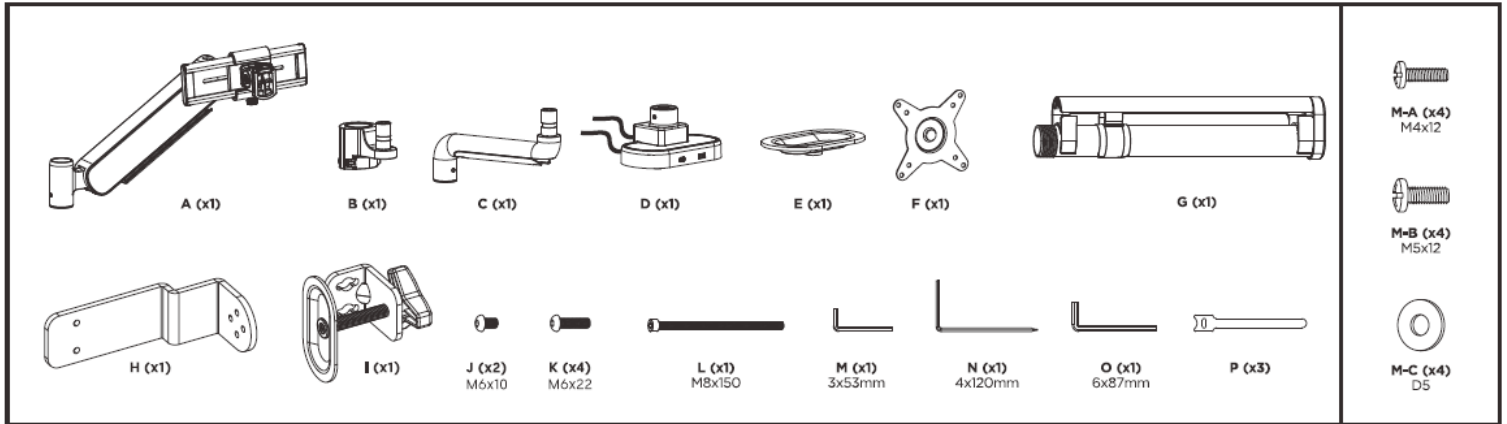


VESA Compatible
75x75 100x100

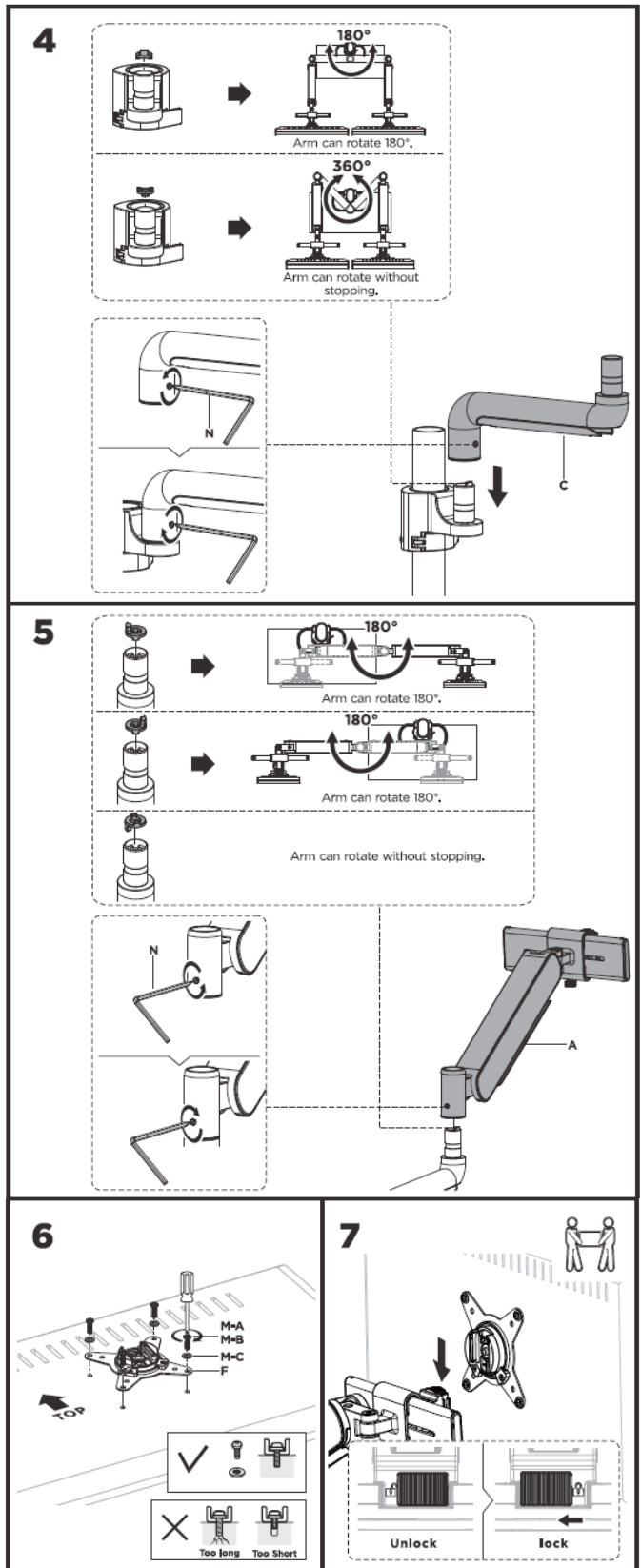
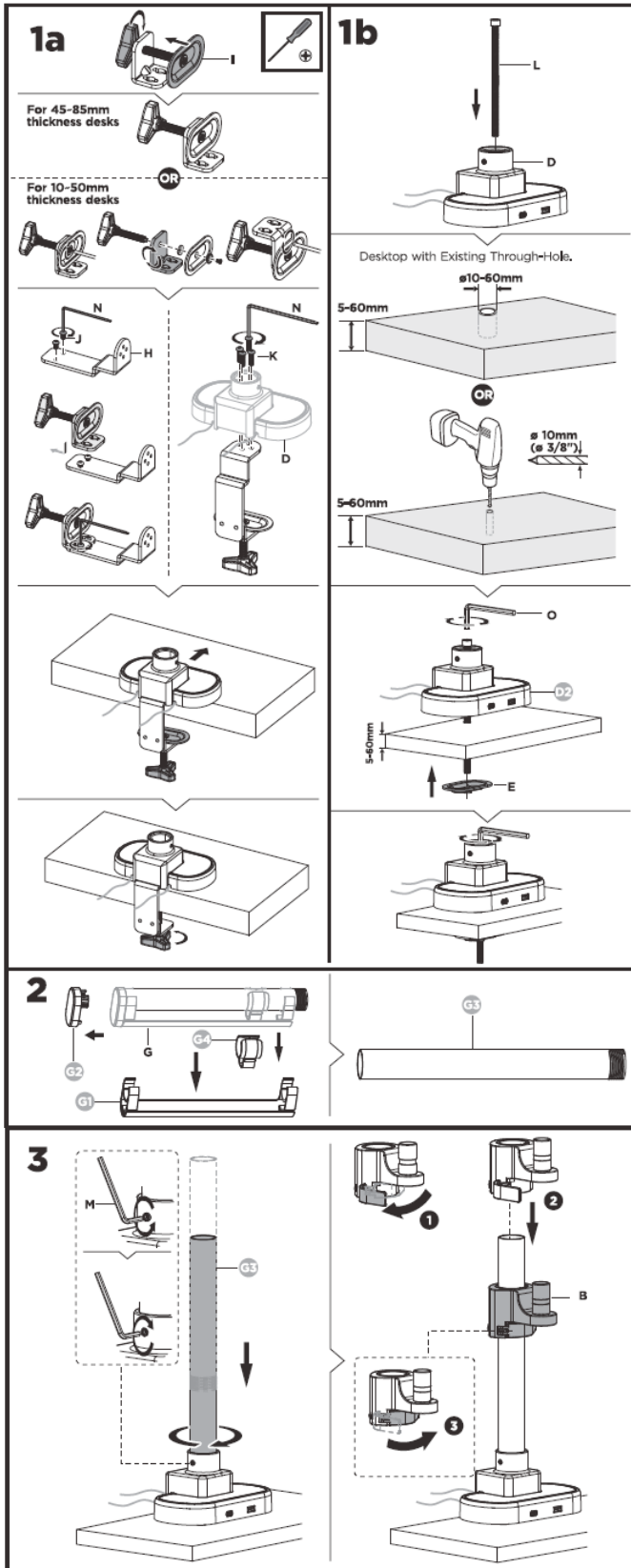
35"
MAX
FLAT/CURVED

(2-10kg)
(4.4-22lbs)
RATED

Performance Series Single Monitor Arm Installation Instructions

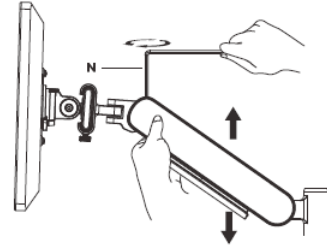


Performance Series Single Monitor Arm Installation Instructions




Performance Series Single Monitor Arm Installation Instructions

8



To properly balance the arm with monitors mounted, adjust the spring tension using the supplied Allen Key as follows:

First, position and firmly hold the arm horizontally as shown. Ask for assistance should you require it.



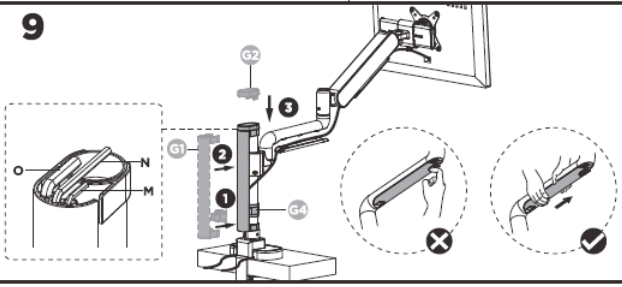
CAUTION: To avoid damage to monitors or mount, always keep the arm in a horizontal position while making adjustments. Again, ask for assistance if required.

If the arm **drops**, turn the adjustment screw clockwise until it stays in a horizontal position.

If the arm **rises**, turn the adjustment screw counter-clockwise until it stays in a horizontal position.


CAUTION: **DO NOT** over tighten the screws.

9




CAUTION: **DO NOT** rotate monitor arms past rear edge of desk. This will avoid an unstable situation which may cause tipping.


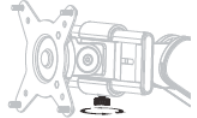


10



Note: If the display does not stop at your desired position, tighten the screw as shown.



Note: If the display does not stop at your desired position, tighten the screw as shown.

11

