



**ROYA™**  
Seating

**AIS**

# ELEGANT CONTOURS. FLEXIBLE COMFORT.

Discover the perfect blend of minimalist design and superior comfort with Roya.



Featuring a sleek, modern silhouette, Roya complements any workspace from the conference room to the open plan. One single continuous line gives Roya a simple elegant design and lightweight aesthetic while providing ergonomic support. Designers will be inspired with black and white frame options, unique hollow casters, and four meshes making specification easy. Choose from neutrals or a hint of color to punctuate your space.



**Simple, elegant design**  
with self-supporting mesh that aligns to the curvature of the back promises extended comfort and ease while promoting healthy posture.



**The breathable mesh material**  
keeps you cool and comfortable throughout your workday. Recline with ease with Roya's kinematic flexible spine ingeniously designed for comfort from the start.



**Adjust your seating position**  
effortlessly with the pneumatic height adjustment feature, allowing you to find your perfect fit in seconds.

Elevate your office aesthetics with Roya's graceful profile that flexes comfortably with your every movement.

# ROYA

Designed by Stefano Sanona & Sabrina Bettini



*"Inspired by the graceful movement of a ribbon in the air, this chair blends fluid design with comfort. Its curved, harmonious lines suggest a single flowing stroke, creating a sense of lightness and suspension. The minimalist structure balances comfort and continuity, inviting you to pause, breathe, and rediscover harmony at work."*



Graceful fixed arm conveniently fits under tables.



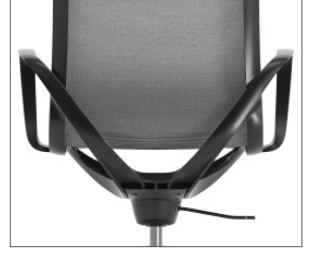
Pneumatic seat adjustment supports users of all sizes.

## Standard Features

- Elegant minimalist design
- Breathable continuous mesh seat and contoured back
- Kinematic flexible spine design supports users as they recline
- Integrated arm rests allow the chair to fit a variety of applications including task and conference
- Pneumatic seat height adjustment
- Tilting mechanism allowing 7° front tilting and 10° rear tilting with locking at 3°
- 5-star base
- Black or white nylon-glass fiber frame
- Black or white hollow casters
- 5-year warranty
- 300 pound rating
- Meets or exceeds current ANSI/BIFMA standards for safety and durability
- CAL 117 compliant
- Ships ready to assemble
- Available in the Express Program (three-day ship)



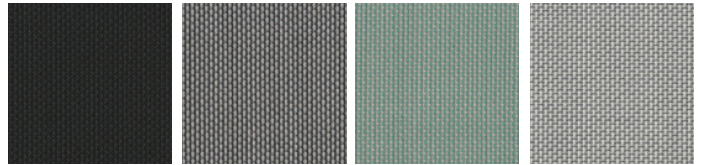
Waterfall edge produces superior comfort.



Breathable mesh keeps user comfortable throughout their workday.

Weight	19 lbs.
Width	24.6"
Depth	16.69"
Height	35.6 - 39.6"
Seat Width	18.5"
Seat Depth	17"
Seat Height	16.5 - 20.4
Arm Height	24.5 - 28.9"

## Mesh Options



Black

Grey

Teal

White

## Frame Options



Black with black casters

White with white casters

Please request samples to view before specifying, as the colors, materials and finishes featured within our printed and electronic literature may vary due to the printing processes and/or viewing screens used. Availability of finishes and materials shown within this brochure may vary due to manufacturers' lifecycle management

## National Showrooms:

### Leominster

AIS Headquarters  
25 Tucker Drive  
Leominster, MA 01453

### New York

AIS New York  
257 Park Avenue South  
New York, NY 10010

### Chicago

The Merchandise Mart  
Suite 391  
Chicago, IL 60654

### Washington, D.C.

AIS Washington, D.C.  
1501 M St., NW, STE 230  
Washington, D.C. 20005

### GSA Sales

GSA Contract 47QSM20D08Q4  
Multiple Award Schedule (MAS)  
Large Category: Furniture & Furnishings  
Subcategories: Office Furniture, Packaged Office Furniture and Furniture Services

### For additional information on AIS:

Dealer Showrooms, Representative Directory, Project Case Studies, Online Catalog & Product Showcase  
**Visit: [ais-inc.com](http://ais-inc.com)**

For additional images: [imagelibrary.ais-inc.com](http://imagelibrary.ais-inc.com)

800.434.7400 | 978.562.7500 | [www.ais-inc.com](http://www.ais-inc.com) | [info@ais-inc.com](mailto:info@ais-inc.com) | 09/2025 | ROYABR

**AIS**