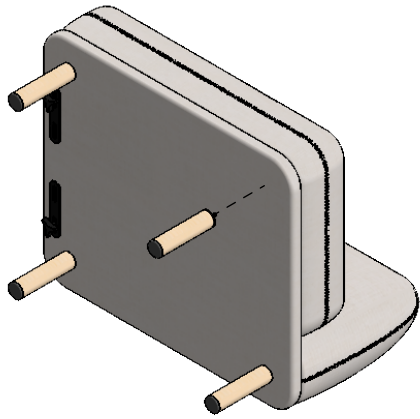


ASSEMBLY INSTRUCTIONS APPLY TO MODELS:

LSOFTMOD
LSOFTMOD2
LSOFTMODRH
LSOFTMODLH
LSOFTCRNR90
LSOFTCRNR45
LSOFTCRNR
LSOFTPL
LSOFTPL2

AIS www.ais-inc.com

COLLECTION:			
SOFT GANGING ASSEMBLY INSTRUCTIONS			
DRAWING NUMBER		1 OF 3	DATE
LSOFTMOD-GAI			2/23/2024
DRAWN BY	CHECKED BY	SCALE	REV
OND	---	1:12	-



STEP 1 = CHAIR

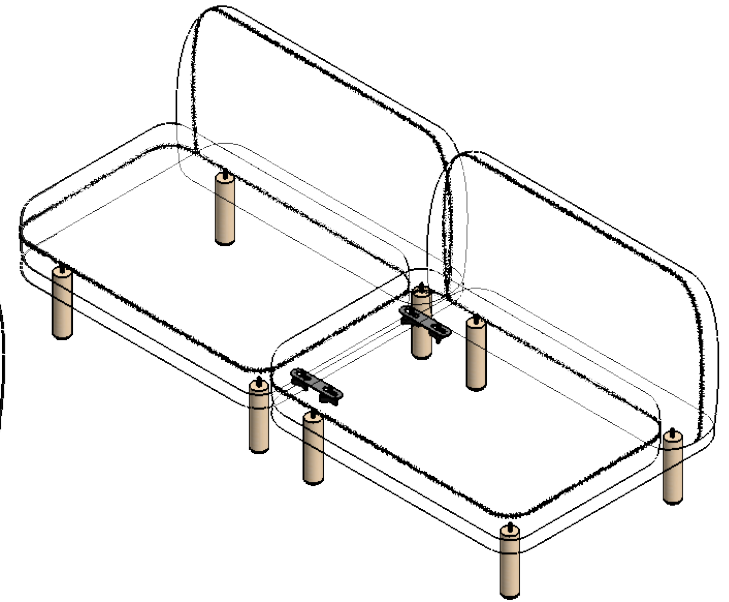
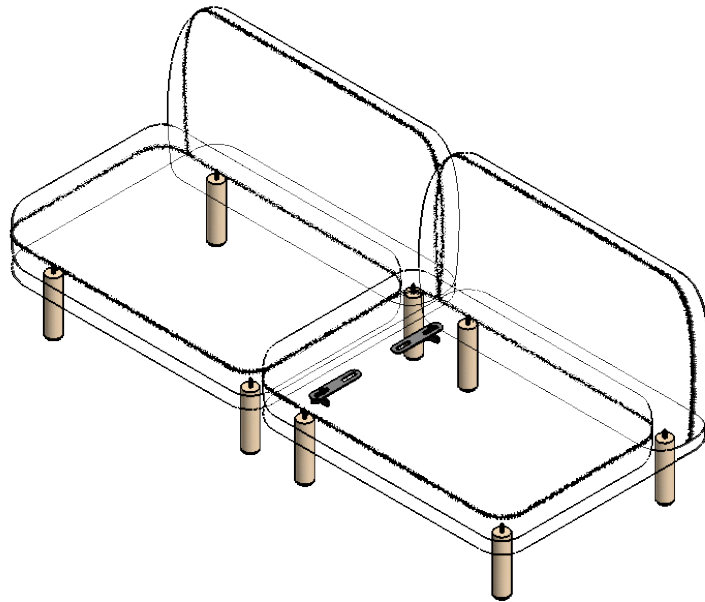
Carefully unpackage chair and lay flat on a padded surface as shown in picture above

STEP 2 = LEGS

Attach 4 legs to the underside of the base. Than carefully lift chair upright with 2 people as to not break the legs

STEP 3 = CHAIR CONNECTION

Join both chairs side by side, than loosen both knobs on brackets



STEP 4 = CHAIR CONNECTION CONT'D

Rotate both brackets 90 degree over the adjoining chair until it lines up with exposed hole, than using 2 people, push chairs tight together while 1 person secures all 4 knobs on the brackets

AIS www.ais-inc.com

COLLECTION:			
SOFT ASSEMBLY GANGING INSTRUCTIONS			
DRAWING NUMBER		2 OF 3	DATE
LISOFTMOD-GAI			
PART NUMBER		SCALE	REV
-			
DRAWN BY	CHECKED BY	1:20	-
OND	- - -		

CASTER OPTION ASSEMBLY INSTRUCTIONS

STEP 1 = CHAIR

Carefully unpackage chair and lay flat on a padded surface as shown in picture

STEP 2 = CASTERS

Align holes in caster with the holes on the underside of the base

STEP 3 = CONNECTION

Secure using (4x) 7/8" Washer and (4x) 5/16-18 1-1/4" LG Hex Head Bolts

Hex Head Bolt

7/8" Washer

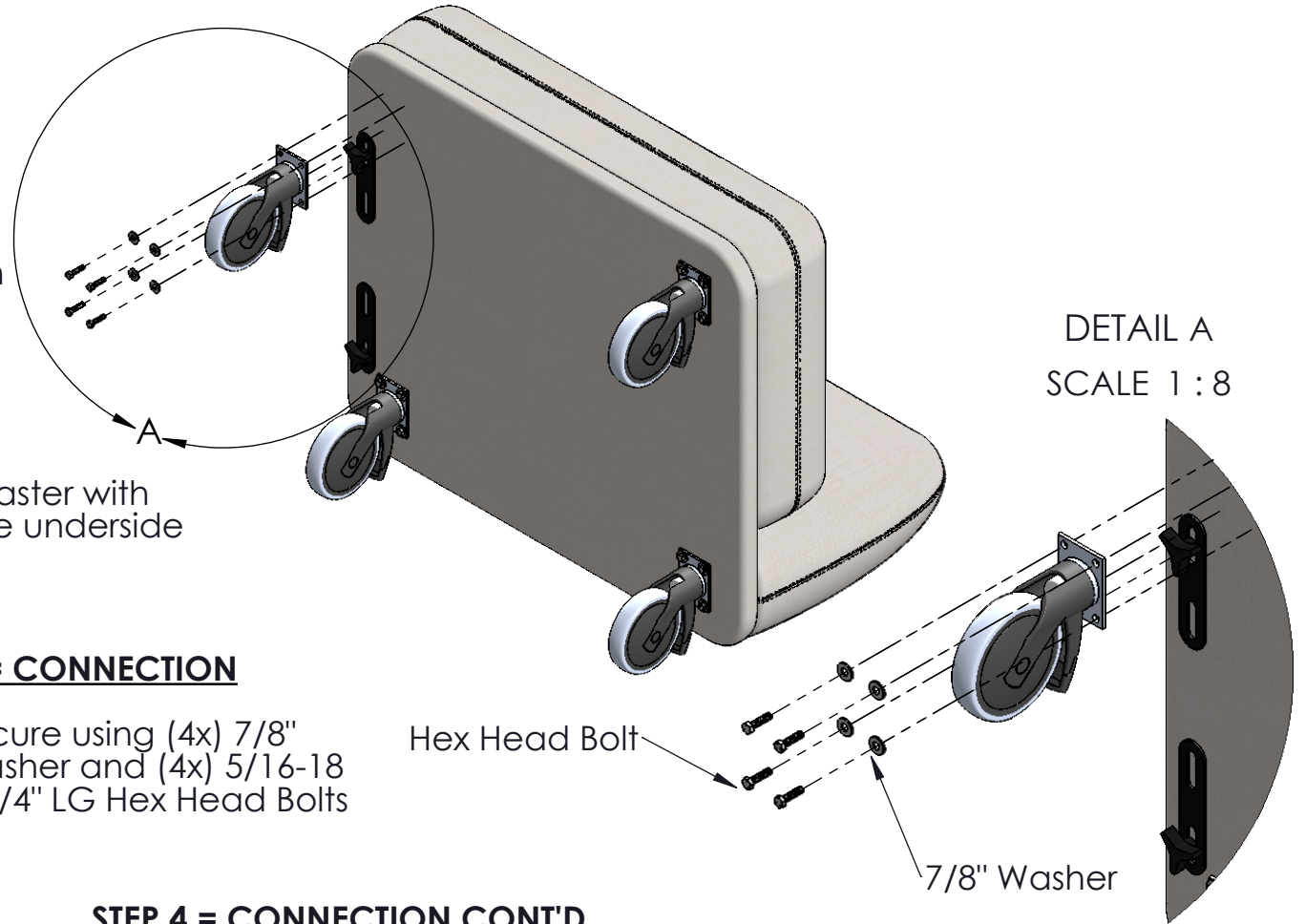
STEP 4 = CONNECTION CONT'D

Using 2 people, carefully lift chair upright

STEP 5 = FINISHED

Proceed to **STEP 3** on page 2

Tools Required: 1/2" Wrench



AIS www.ais-inc.com

COLLECTION:			
SOFT GANGING ASSEMBLY INSTRUCTIONS CONT'D			
DRAWING NUMBER	3 OF 3	DATE	REV
LISOFTMOD-GAI			
PART NUMBER		2/23/2024	
-			
DRAWN BY	CHECKED BY	SCALE	
OND	- - -	1:12	-