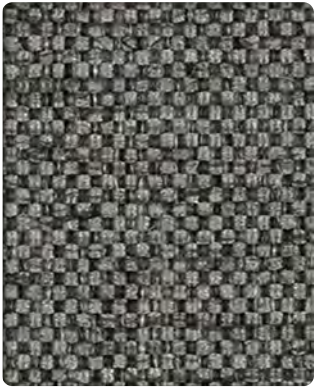


# UPHOLSTERY FABRIC OPTIONS

Seating & Cushions



Click on any image to view all colors, see fabric specifications, and order memo samples.



Apprentice Phantom



Apprentice Classic



Apprentice Heron



Apprentice Ember



Lateral Skyline



Lateral Mist



Lateral Citrine



Lateral Horizon



Lateral Sterling



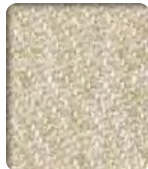
Lateral Calypso



Lateral Sangria



Outlander Charcoal



Outlander Limestone



Outlander Fog



Outlander Electric



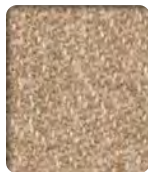
Outlander Aquamarine



Outlander Amber



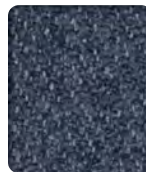
Outlander Mars



Outlander Cashmere



Outlander Flannel



Outlander Dark Blue



Outlander Fairway



Outlander Acorn



Outlander Cabernet



Square One Black & White



Square One Misto



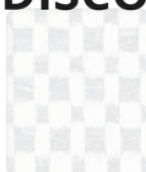
Square One Grasshopper



Square One Glow



Square One Charcoal



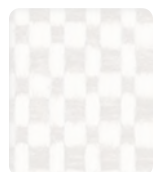
Square One Dolphin



Square One Birdy



Square One Fleece



Square One Oak

**DISCONTINUED**

Click on any image to view all colors, see fabric specifications, and order memo samples.



Apprentice  
Diplomat



Apprentice  
Mystic



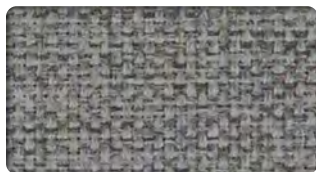
Apprentice  
Eucalyptus



Apprentice  
Fleece



Flanders  
Bermuda



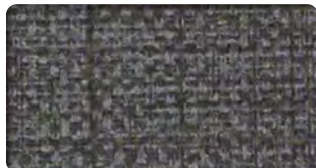
Flanders  
Slate



Flanders  
Coconut



Flanders  
Fossil



Flanders  
Charcoal



Flanders  
Polynesia



Flanders  
Lifesaver



Hopsack  
Fjord



Hopsack  
Cori



Hopsack  
Oslo



Hopsack  
Hemlock



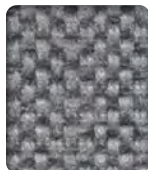
Hopsack  
Willow



Hopsack  
Twine



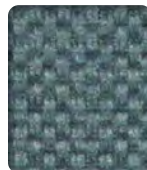
Hopsack  
Stucco



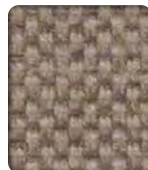
Hopsack  
Carbon



Hopsack  
Rain



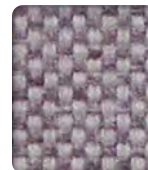
Hopsack  
Shadow



Hopsack  
Earth



Hopsack  
Bamboo



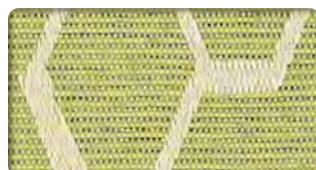
Hopsack  
Mystic



Charlotte  
Lagoon



Charlotte  
Lapis



Charlotte  
Peridot



Charlotte  
Sunset



Charlotte  
Graphite



Charlotte  
Ink



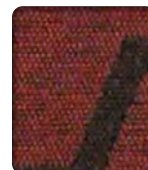
Charlotte  
Silver



Charlotte  
Tungsten



Charlotte  
Marzipan



Charlotte  
Cherrywood

# Stinson Upholstery

## Technical Information

Pattern 54"	Content & Backing	Certification	Weight	Pattern Repeat	Finish	Abrasion Wyznbeek	Lightfastness	Flammability*	Cleaning Code	Grade**	
Apprentice Directional	100% Polypropylene Backing: Acrylic	GREENGUARD GOLD LBC Red List Free	17.03 oz.	None	None / Optional Finishes Available	90,000 Double Rubs	Class 4.5 300 hours	Cal.117-2013 NFPA 260 / UFAC Class 1	W-S, BC	B	
Charlotte Directional	47% Post Industrial Recycled Polyester, 27% Polyester, 26% Post Consumer Recycled Polyester Backing: Acrylic	GREENGUARD GOLD LBC Red List Free	11.05 oz.	14.875" h, 17.125" v	Non-PFOA / Non-PFAS / Water-Based Stain Resistant	72,000 Double Rubs	Class 4.0 40 hours	Cal.117-2013 NFPA 260 / UFAC Class 1	W-S, BC	D	
Flanders Directional	Non-Phthalate Vinyl Backing: Polyester Inherent Fluid Barrier	GREENGUARD GOLD	30 oz.	None	Advanced Soil and Stain Resistant Topcoat	250,000 <sup>^</sup> Double rubs	Class 4.5 300 hours	Cal.117-2013 NFPA 260 / UFAC Class 1	W-S, BC	E	
Hopsack Directional	Non-Phthalate Vinyl Backing: Polyester Inherent Fluid Barrier	GREENGUARD GOLD	30 oz.	None	Advanced Soil and Stain Resistant Topcoat	100,000 <sup>^</sup> Double Rubs	Class 4.5 1000 hours	Cal.117-2013 NFPA 260 / UFAC Class 1	W-S, BC	E	
Lateral Directional	65% Post Consumer Recycled Polyester, 35% Polyester Backing: Acrylic	GREENGUARD GOLD	10.05 oz.	0.0" h, 4.375" v	Non-PFAS / Water-Based Stain Resistant	120,000 <sup>^</sup> Double Rubs	Class 5 60 hours	Cal.117-2013 NFPA 260 / UFAC Class 1	W-S, BC	D	
Outlander Directional	100% Polyester Backing: SBR Synthetic	GREENGUARD GOLD LBC Red List Free	15.05 oz.	None	Non-PFOA / Non-PFAS / Water-Based Stain Resistant	100,000 <sup>^</sup> Double Rubs	Class 4.5 40 hours	Cal.117-2013 NFPA 260 / UFAC Class 1 ASTM E-84 (Unadhered)	W-S, BC	E	
Square One Directional	63% Polyester, 37% Olefin Backing: Acrylic	GREENGUARD GOLD LBC Red List Free	19.6 oz.	<b>DISCONTINUED</b>				Class 4.0 40 hours	Cal.117-2013 NFPA 260 / UFAC Class 1	W-S, BC	E

### REDUCED ENVIRONMENTAL IMPACT

These products are GREENGUARD GOLD Certified for low chemical and particle emissions to UL standard UL 2818 and may contribute to LEED Certification

No FR Additives / No Antimicrobial Additives

### CARE AND CLEANING INFORMATION

WS: Water / Solvent Cleaner

BC: Bleach Cleanable – 1 part bleach, 9 parts water = 10% Bleach, 90% Water solution. **Do not clean / disinfect fabric for longer than 10 minutes using the 10% bleach solution. Always rinse promptly with clean water after applying the bleach solution. Failure to do so will void any and all warranties.**

### DYE TRANSFER DISCLAIMER

Certain clothing and accessory dyes (such as those used in denim jeans) may migrate to lighter colors. This phenomenon is increased by humidity and temperature and is irreversible. Stinson will not assume responsibility for dye transfer caused by external contaminants. Please check compatibility when using these products in combination with painted or varnished surfaces.

### ADDITIONAL INFORMATION

<sup>^</sup>Abrasion test results exceeding ACT Performance Guidelines are not an indicator of product lifespan. Multiple factors affect fabric durability and appearance retention.

\*This term and any corresponding data refer to the typical performance in the tests indicated and should not be construed to imply the behavior of this or any other material under actual fire conditions.

\*\*Grades shown are for 2024 and may shift due to pricing volatility. Please check with AIS to confirm fabric grade prior to ordering.

For memo samples and complete specifications, visit [cfstinson.com](http://cfstinson.com)

Dye lots may vary slightly from samples shown

All colorways for each pattern featured on this card are available through the Alliance Program



These fabrics meet or exceed these ACT Performance Guidelines  
\*Certification Marks owned by ACT®

To order memos, please visit [www.cfstinson.com](http://www.cfstinson.com).

To view samples online, visit [www.ais-inc.com/finishcenter](http://www.ais-inc.com/finishcenter)

800.434.7400 | 978.562.7500 | [www.ais-inc.com](http://www.ais-inc.com) | 09/2024 | ALLSTIFC

# AIS